

FOR  
LEASE

# Building 4

9380-9450 SW Gemini Drive | Beaverton, OR



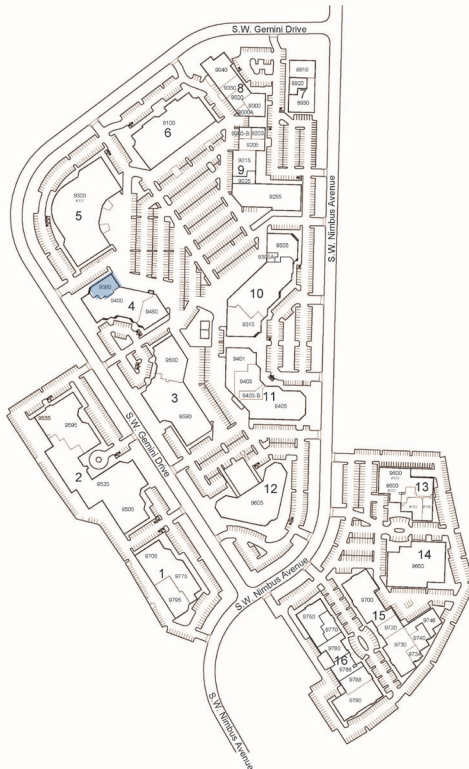
\$19.00/SF  
NNN

Suite 9380 - 5,190 SF

- End cap space with good light
- Advanced telecommunications infrastructure with fiber available
- Floor to ceiling glass
- 4/1,000 parking ratio
- Exterior building signage available
- Ability to add roll up door for loading if needed

Tenant improvements available for new leases

Floor plan on back



For more information, contact:

**JOHN MEDAK** | 503-542-5898 | [john.medak@colliers.com](mailto:john.medak@colliers.com)

**JENNIFER MEDAK** | 503-542-5899 | [jennifer.medak@colliers.com](mailto:jennifer.medak@colliers.com)

[www.nimbuscorporateshorenstein.com](http://www.nimbuscorporateshorenstein.com)

SHORENSTEIN



[www.shorenstein.com](http://www.shorenstein.com)

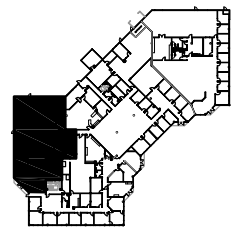
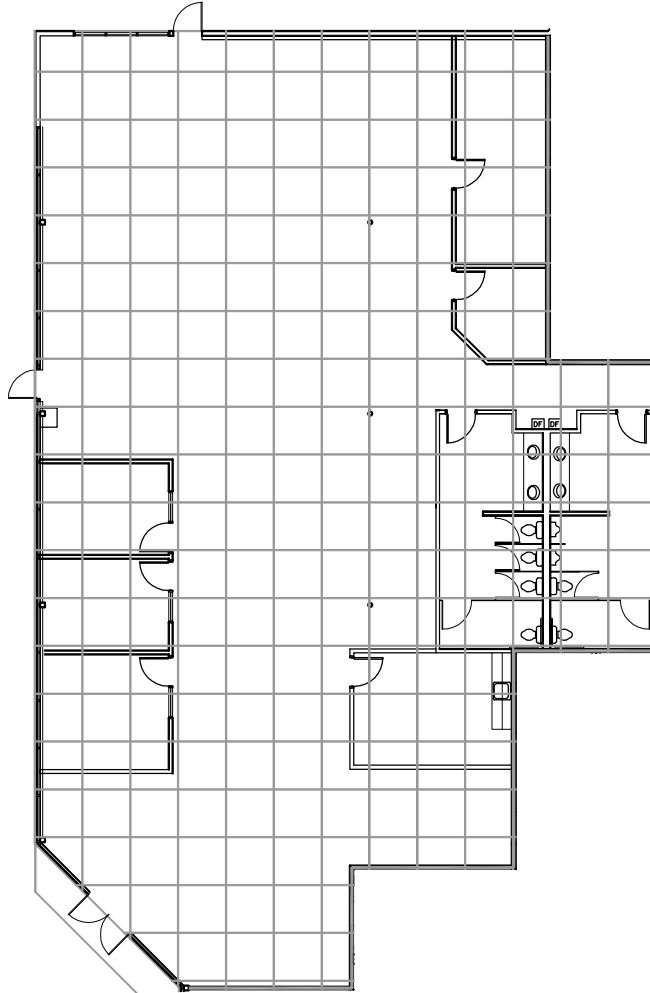


FOR  
LEASE

# Building 4

9380–9450 SW Gemini Drive | Beaverton, OR

Suite 9380  
Approximately 5,190 SF



For more information, contact:

**JOHN MEDAK** | 503-542-5898 | [john.medak@colliers.com](mailto:john.medak@colliers.com)

**JENNIFER MEDAK** | 503-542-5899 | [jennifer.medak@colliers.com](mailto:jennifer.medak@colliers.com)

