

FOR LEASE

9707 WAPLES

9707 WAPLES STREET
SAN DIEGO, CALIFORNIA 92121

For more Information, please contact:

Brett Ward, LEED AP

858.546.5470

brett.ward@cassidyurley.com

CA Lic. 01426040

Michael Cassolato

858.546.5434

michael.cassolato@cassidyurley.com

CA Lic. 01893847

Cassidy Turley

4350 La Jolla Village Drive, Suite 500

San Diego, California 92122

T 858.546.5400

F 858.630.6320

cassidyurley.com/sandiego



The information contained herein has been given to us by the owner of the property or other sources we deem reliable. We have no reason to doubt its accuracy, but we do not guarantee it. All information should be verified prior to purchase or lease.



FOR LEASE

9707 WAPLES

9707 WAPLES STREET
SAN DIEGO, CALIFORNIA 92121

For more Information, please contact:

Brett Ward, LEED AP

858.546.5470

brett.ward@cassidyurley.com

CA Lic. 01426040

Michael Cassolato

858.546.5434

michael.cassolato@cassidyurley.com

CA Lic. 01893847

Cassidy Turley

4350 La Jolla Village Drive, Suite 500

San Diego, California 92122

T 858.546.5400

F 858.630.6320

cassidyurley.com/sandiego



The information contained herein has been given to us by the owner of the property or other sources we deem reliable. We have no reason to doubt its accuracy, but we do not guarantee it. All information should be verified prior to purchase or lease.

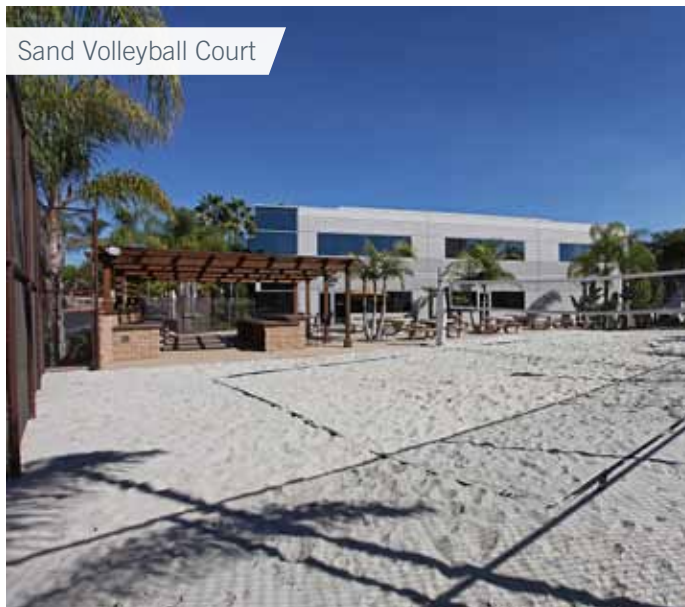
K:\9707 Waples\Flyer\9707-waples-flyer.indd

PROPERTY FEATURES & AMENITIES

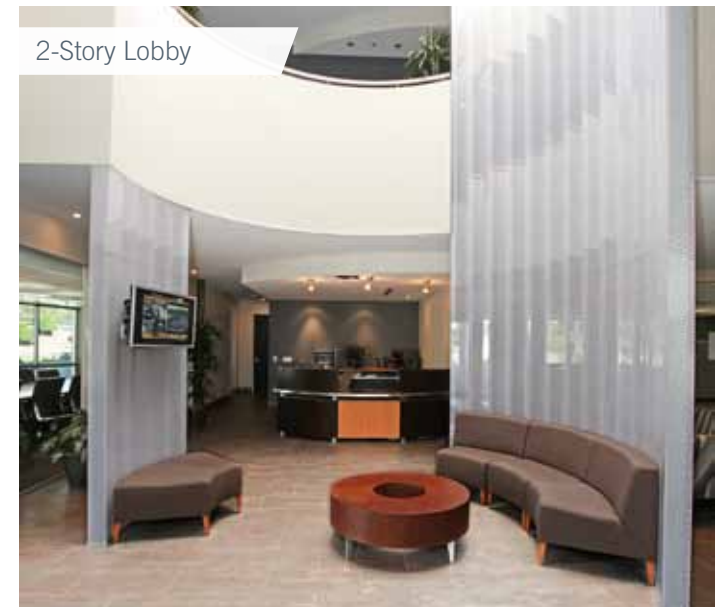
9707 Waples offers the best-in-class on-site amenities, a strong and prestigious image with high-end interior finishes. Together, these features and characteristics make 9707 Waples the optimum solution for any company looking to enhance their identity, recruit and retain the best talent, and provide their employees an environment in which they can thrive and succeed. The on-site amenities include:

- Sand volleyball court
- Prominent monument signage
- Large outdoor BBQ and trellis covered patio
- Executive conferencing center and meeting rooms
- Shared training room
- Shared lunch room
- Fully equipped reprographics center
- Showers and lockers
- Roundabout driveway entry
- 2-story dramatic lobby
- Data services that are in place include both T1 lines and fiber optic
- Work stations can be made available for tenant's use
- After hours key card security access system

Located within the newly expanded
City of San Diego Enterprise Zone



Sand Volleyball Court



2-Story Lobby

FOR LEASE | 9707 WAPLES

9707 WAPLES STREET
SAN DIEGO, CALIFORNIA 92121

For more Information, please contact:

Brett Ward, LEED AP

858.546.5470

brett.ward@cassidyurley.com

CA Lic. 01426040

Michael Cassolato

858.546.5434

michael.cassolato@cassidyurley.com

CA Lic. 01893847

Cassidy Turley

4350 La Jolla Village Drive, Suite 500

San Diego, California 92122

T 858.546.5400

F 858.630.6320

cassidyurley.com/sandiego



The information contained herein has been given to us by the owner of the property or other sources we deem reliable. We have no reason to doubt its accuracy, but we do not guarantee it. All information should be verified prior to purchase or lease.

K:\9707 Waples\Flyer\9707-waples-flyer.indd

AVAILABILITIES

Floor	Suite	Size (SF)	Lease Rate	Availability
1st	150	11,883 SF	\$2.15 Full Service	Now
		Divisible to 4,000 SF		

Roundabout Entry



Outdoor Patio & BBQ



Conference Center



Training Room



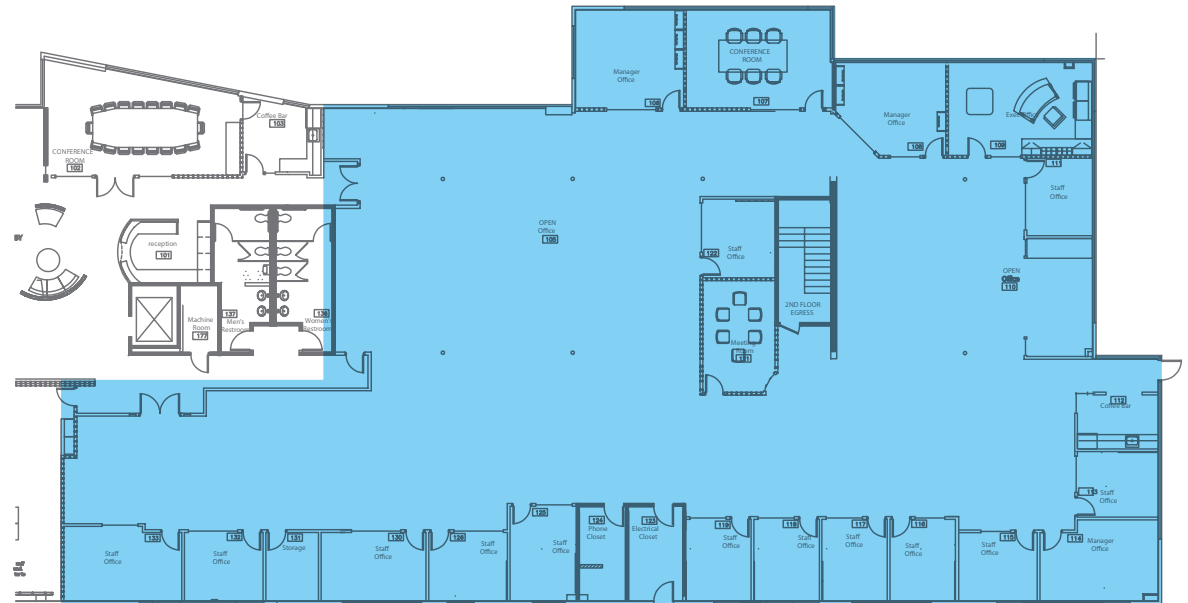
FOR LEASE | 9707 WAPLES

9707 WAPLES STREET
SAN DIEGO, CALIFORNIA 92121

Suite 150 | 11,883 SF – (Divisible to 4,000 SF)
Lease Rate: \$2.15 Full Service
Available: Now

- Ground floor suite – with extensive glass line
- Large efficient open area
- Double door entry directly off of the main lobby
- 23 private offices
- Conference room
- Break room
- Server room
- Copy/work station
- Storage room

FLOOR PLAN



Tour Notes _____

FOR LEASE

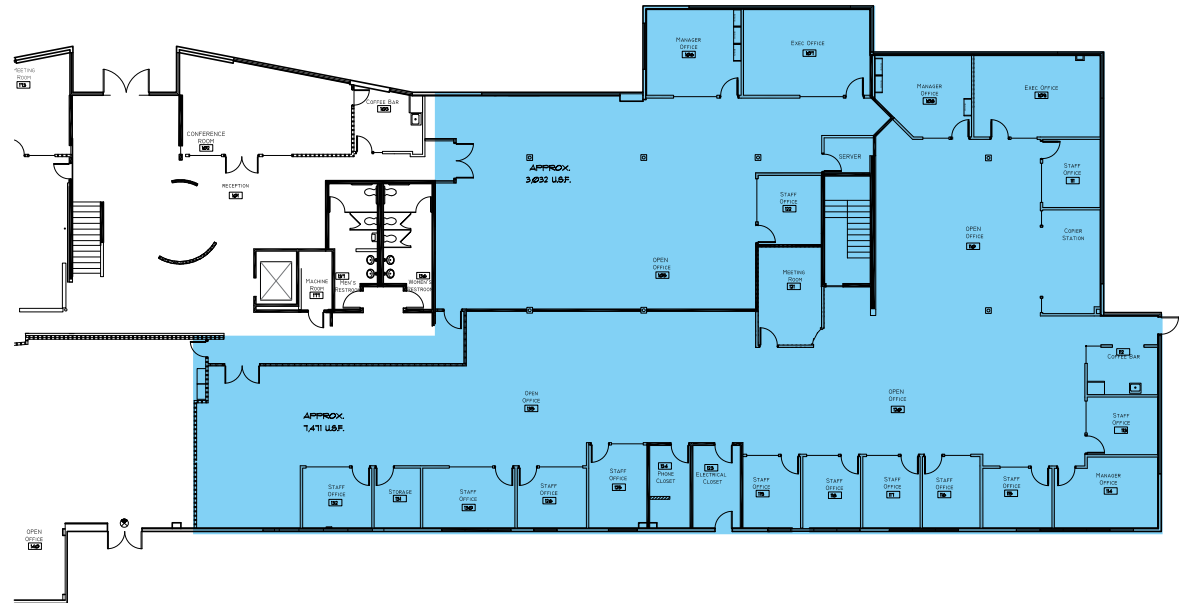
9707 WAPLES

9707 WAPLES STREET
SAN DIEGO, CALIFORNIA 92121

Suite 150 | 11,883 SF – (Divisible to 4,000 SF)
Lease Rate: \$2.15 Full Service
Available: Now

- Flexible size range
- Ground floor suite – with extensive glass line
- Large efficient open area
- Double door entry directly off of the main lobby
- Conference room
- Break room
- Server room
- Copy/work station
- Storage room

DIVISIBILITY PLAN



Tour Notes _____

FOR LEASE

9707 WAPLES

9707 WAPLES STREET
SAN DIEGO, CALIFORNIA 92121

SORRENTO MESA AMENITIES AERIAL





For more Information, please contact:

Brett Ward, LEED AP

858.546.5470

brett.ward@cassidyurley.com

CA Lic. 01426040

Michael Cassolato

858.546.5434

michael.cassolato@cassidyurley.com

CA Lic. 01893847

Cassidy Turley

4350 La Jolla Village Drive, Suite 500

San Diego, California 92122

T 858.546.5400

F 858.630.6320

cassidyurley.com/sandiego