

MARKET CENTER

555 & 575 Market St.
San Francisco, CA

EXPERIENCE
OUR LOBBY &
TENANT AMENITIES

VIRTUAL TOUR



FOR MORE INFORMATION CONTACT:

BILL CUMBELICH

Lic. 00533546
+1 415 291 8882
bill.cumbelich@cbre.com

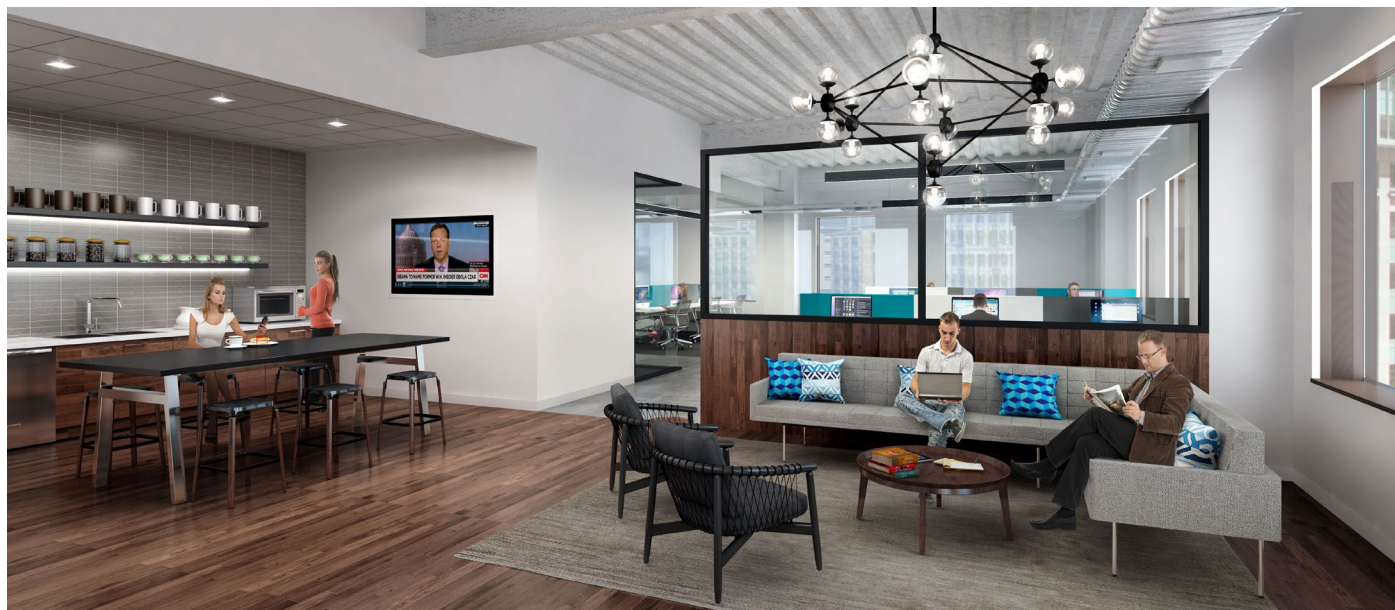
TOM POGGI

Lic. 00969978
+1 415 291 8884
tom.poggi@cbre.com

JENNA KINSINGER

Lic. 02034180
+1 415 772 0216
jenna.kinsinger@cbre.com

CREATIVE HIGHRISE OPPORTUNITY



© 2020 CBRE, Inc. All rights reserved. This information has been obtained from sources believed reliable, but has not been verified for accuracy or completeness. You should conduct a careful, independent investigation of the property and verify all information. Any reliance on this information is solely at your own risk. CBRE and the CBRE logo are service marks of CBRE, Inc. All other marks displayed on this document are the property of their respective owners. Photos herein are the property of their respective owners. Use of these images without the express written consent of the owner is prohibited.

CBRE  **PARAMOUNT GROUP, INC.**

MARKET CENTER

555 & 575 Market St.
San Francisco, CA

FOR MORE INFORMATION CONTACT:

BILL CUMBELICH

Lic. 00533546
+1 415 291 8882
bill.cumbelich@cbre.com

TOM POGGI

Lic. 00969978
+1 415 291 8884
tom.poggi@cbre.com

JENNA KINSINGER

Lic. 02034180
+1 415 772 0216
jenna.kinsinger@cbre.com

BRAND NEW FITNESS CENTER



© 2020 CBRE, Inc. All rights reserved. This information has been obtained from sources believed reliable, but has not been verified for accuracy or completeness. You should conduct a careful, independent investigation of the property and verify all information. Any reliance on this information is solely at your own risk. CBRE and the CBRE logo are service marks of CBRE, Inc. All other marks displayed on this document are the property of their respective owners. Photos herein are the property of their respective owners. Use of these images without the express written consent of the owner is prohibited.

CBRE  **PARAMOUNT
GROUP, INC.**

MARKET CENTER

555 & 575 Market St.
San Francisco, CA

FOR MORE INFORMATION CONTACT:

BILL CUMBELICH

Lic. 00533546
+1 415 291 8882
bill.cumbelich@cbre.com

TOM POGGI

Lic. 00969978
+1 415 291 8884
tom.poggi@cbre.com

JENNA KINSINGER

Lic. 02034180
+1 415 772 0216
jenna.kinsinger@cbre.com

FLOOR/ SUITE	SQUARE FEET	DATE AVAILABLE	COMMENTS
3800	6,473	Now	Amazing water views and Market Street outlooks, double door entry off the elevator, 2 conference rooms, 5 offices/meeting rooms with open area, 2 kitchenettes
3500	12,885	1/1/21	High-end professional services full floor, incredible 360° views, highlighting water and both bridges, 9 offices, 1 large conference room, 2 small conference rooms, open kitchen - Take the virtual tour
3400	12,885	1/1/21	High end professional services full floor, incredible 360° views, highlighting water and both bridges, 20 offices, 1 large conference room, 1 medium conference room, 1 kitchen - Take the virtual tour
3100	12,885	1/1/21	High-end professional services full floor, incredible 360° views, highlighting water and both bridges, 17 offices, 1 large conference room, 1 medium conference room, and 2 kitchenettes
3025	1,848	Now	Excellent northwest facing views, 2nd gen spec suite, 1 conference room, kitchen
2900	4,409	Now	Great corner professional services suite with beautiful water and city views, double door identity, 7 offices, 1 conference room, and 1 break room
2800	12,885	2/1/21	New creative spec suite underway with exposed ceiling and polished concrete, incredible 360° views, highlighting water and both bridges, 3 conference rooms, 6 offices/meeting rooms, 4 phone rooms, open kitchen area
2750	4,377	Now	Double door identity off the elevator, Market Street outlooks with natural light, 1 conference room, 4 offices/meeting rooms with open area for workstations, kitchen with booth seating
2700	5,629	2/1/21	New creative spec suite underway with exposed ceiling and polished concrete, great southwest facing views, 3 conference rooms, 4 offices/meeting rooms, 1 phone room, open kitchen area
2600	7,412	3/1/21	Great water views and natural light, 14 offices/meeting rooms, kitchenette
2550	5,877	Now	New spec suite completed, 2 conference rooms, 3 phone/meeting rooms, open kitchen, IT room - Take the virtual tour
2050	2,155	Now	New spec suite completed, 2 office/meeting rooms, kitchenette and IT closet - Take the virtual tour
2028	2,545	Now	Great NW facing views with ample natural light, double door identity off the elevator, 1 conference room, 2 offices/meeting rooms with open area - Take the virtual tour
1700	5,821	Now	Professional services suite with new spec finishes, double door identity off the elevator, 1 large conference room, 11 offices, kitchen
850	3,156	Now	Brand new spec suite underway with exposed ceiling in the reception area, 1 conference room, 2 office/meeting rooms, open kitchen
825	3,239	Now	Creative 2nd gen spec suite, exposed ceilings with polished concrete, 1 conference room, 2 offices/meeting rooms, open kitchen - Take the virtual tour
800	5,876	Now	Creative 2nd gen spec suite, exposed ceilings with polished concrete, 2 conference rooms, 3 offices/meeting rooms, open kitchen - Take the virtual tour
375	3,575	Now	Brand new spec suite underway, Market Street outlooks, 2 conference rooms, kitchenette, production area
300	4,294	5/1/21	Great 2nd gen spec suite, Market Street outlooks, 1 conference room, 2 phone rooms, kitchen

**TOTAL
SF 118,226**

© 2020 CBRE, Inc. All rights reserved. This information has been obtained from sources believed reliable, but has not been verified for accuracy or completeness. You should conduct a careful, independent investigation of the property and verify all information. Any reliance on this information is solely at your own risk. CBRE and the CBRE logo are service marks of CBRE, Inc. All other marks displayed on this document are the property of their respective owners. Photos herein are the property of their respective owners. Use of these images without the express written consent of the owner is prohibited.

CBRE  **PARAMOUNT
GROUP, INC.**

MARKET CENTER

555 & 575 Market St.
San Francisco, CA

FOR MORE INFORMATION CONTACT:

BILL CUMBELICH

Lic. 00533546
+1 415 291 8882
bill.cumbelich@cbre.com

TOM POGGI

Lic. 00969978
+1 415 291 8884
tom.poggi@cbre.com

JENNA KINSINGER

Lic. 02034180
+1 415 772 0216
jenna.kinsinger@cbre.com

SUITE 3800
575 MARKET
6,473 RSF

FEATURES

- Available Now
- Amazing water views & Market Street outlooks
- Double door entry off the elevator
- 2 conference rooms
- 5 offices/meeting rooms with open area
- 2 kitchenettes



© 2020 CBRE, Inc. All rights reserved. This information has been obtained from sources believed reliable, but has not been verified for accuracy or completeness. You should conduct a careful, independent investigation of the property and verify all information. Any reliance on this information is solely at your own risk. CBRE and the CBRE logo are service marks of CBRE, Inc. All other marks displayed on this document are the property of their respective owners. Photos herein are the property of their respective owners. Use of these images without the express written consent of the owner is prohibited.

MARKET CENTER

555 & 575 Market St.
San Francisco, CA

FOR MORE INFORMATION CONTACT:

BILL CUMBELICH

Lic. 00533546
+1 415 291 8882
bill.cumbelich@cbre.com

TOM POGGI

Lic. 00969978
+1 415 291 8884
tom.poggi@cbre.com

JENNA KINSINGER

Lic. 02034180
+1 415 772 0216
jenna.kinsinger@cbre.com

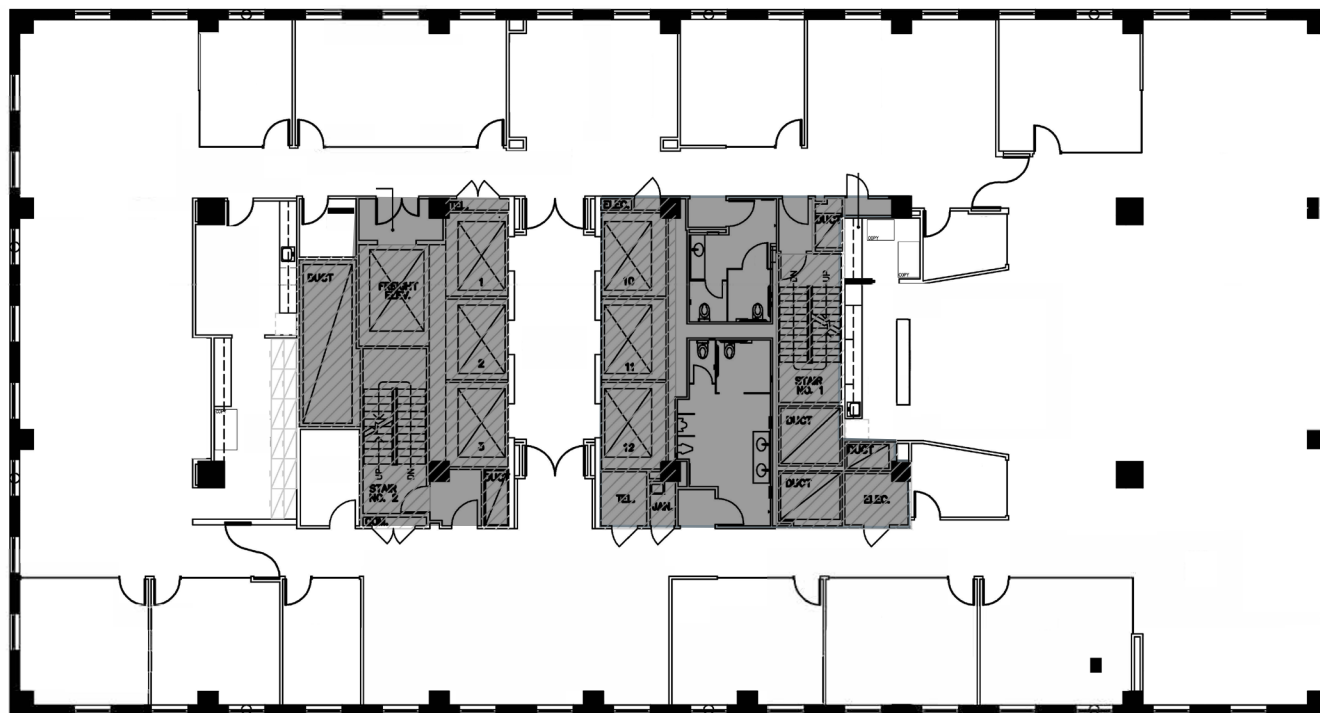
SUITE 3500
575 MARKET
12,885 RSF



TAKE THE VIRTUAL TOUR

FEATURES

- Available January 1, 2021
- High-end professional services full floor
- Incredible 360° views, highlighting water and both bridges
- 9 offices
- 1 large conference room
- 2 small conference rooms
- Open kitchen



© 2020 CBRE, Inc. All rights reserved. This information has been obtained from sources believed reliable, but has not been verified for accuracy or completeness. You should conduct a careful, independent investigation of the property and verify all information. Any reliance on this information is solely at your own risk. CBRE and the CBRE logo are service marks of CBRE, Inc. All other marks displayed on this document are the property of their respective owners. Photos herein are the property of their respective owners. Use of these images without the express written consent of the owner is prohibited.

MARKET CENTER

555 & 575 Market St.
San Francisco, CA

FOR MORE INFORMATION CONTACT:

BILL CUMBELICH

Lic. 00533546
+1 415 291 8882
bill.cumbelich@cbre.com

TOM POGGI

Lic. 00969978
+1 415 291 8884
tom.poggi@cbre.com

JENNA KINSINGER

Lic. 02034180
+1 415 772 0216
jenna.kinsinger@cbre.com

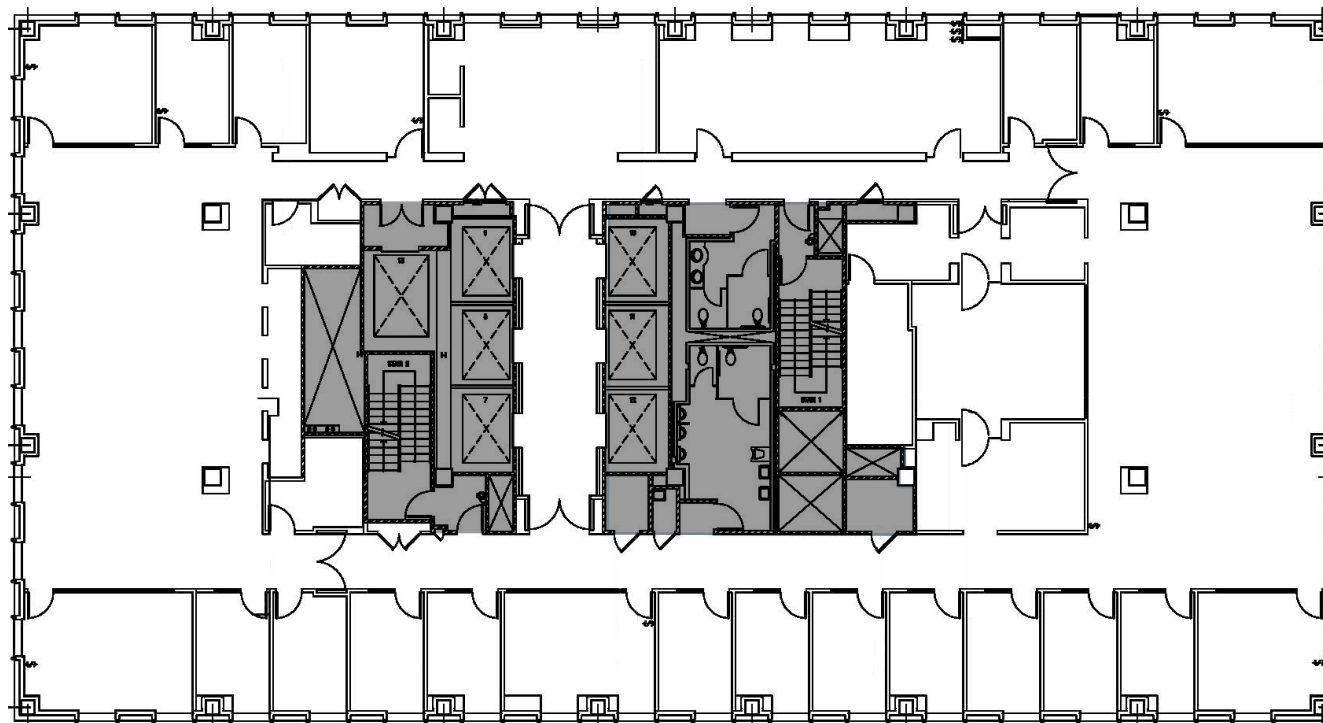
SUITE 3400
575 MARKET
12,885 RSF



TAKE THE VIRTUAL TOUR

FEATURES

- Available January 1, 2021
- High-end professional services full floor
- Incredible 360° views, highlighting water and both bridges
- 20 offices
- 1 large conference room
- 1 medium conference room
- Kitchen



© 2020 CBRE, Inc. All rights reserved. This information has been obtained from sources believed reliable, but has not been verified for accuracy or completeness. You should conduct a careful, independent investigation of the property and verify all information. Any reliance on this information is solely at your own risk. CBRE and the CBRE logo are service marks of CBRE, Inc. All other marks displayed on this document are the property of their respective owners. Photos herein are the property of their respective owners. Use of these images without the express written consent of the owner is prohibited.

MARKET CENTER

555 & 575 Market St.
San Francisco, CA

FOR MORE INFORMATION CONTACT:

BILL CUMBELICH

Lic. 00533546
+1 415 291 8882
bill.cumbelich@cbre.com

TOM POGGI

Lic. 00969978
+1 415 291 8884
tom.poggi@cbre.com

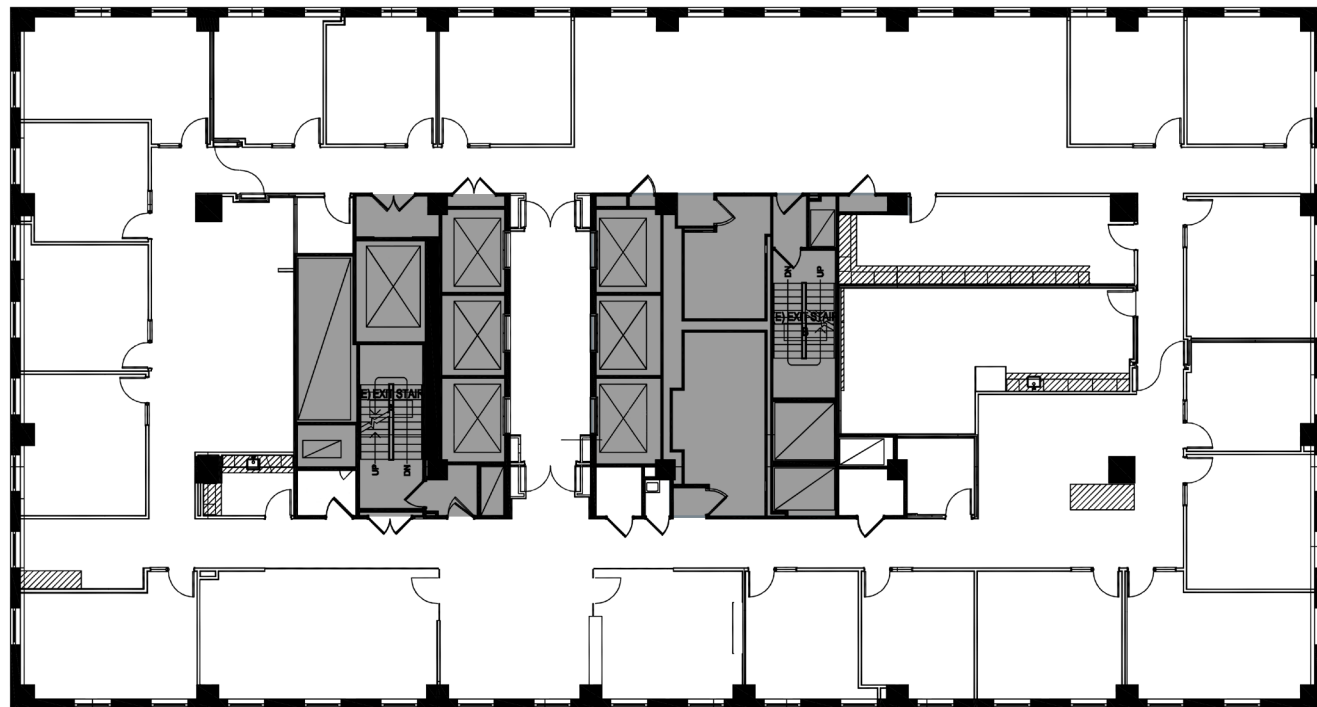
JENNA KINSINGER

Lic. 02034180
+1 415 772 0216
jenna.kinsinger@cbre.com

SUITE 3100
575 MARKET
12,885 RSF

FEATURES

- Available January 1, 2021
- High-end professional services full floor
- Incredible 360° views, highlighting water and both bridges
- 17 offices
- 1 large conference room
- 1 medium conference room
- 2 kitchenettes



© 2020 CBRE, Inc. All rights reserved. This information has been obtained from sources believed reliable, but has not been verified for accuracy or completeness. You should conduct a careful, independent investigation of the property and verify all information. Any reliance on this information is solely at your own risk. CBRE and the CBRE logo are service marks of CBRE, Inc. All other marks displayed on this document are the property of their respective owners. Photos herein are the property of their respective owners. Use of these images without the express written consent of the owner is prohibited.

MARKET CENTER

555 & 575 Market St.
San Francisco, CA

FOR MORE INFORMATION CONTACT:

BILL CUMBELICH

Lic. 00533546
+1 415 291 8882
bill.cumbelich@cbre.com

TOM POGGI

Lic. 00969978
+1 415 291 8884
tom.poggi@cbre.com

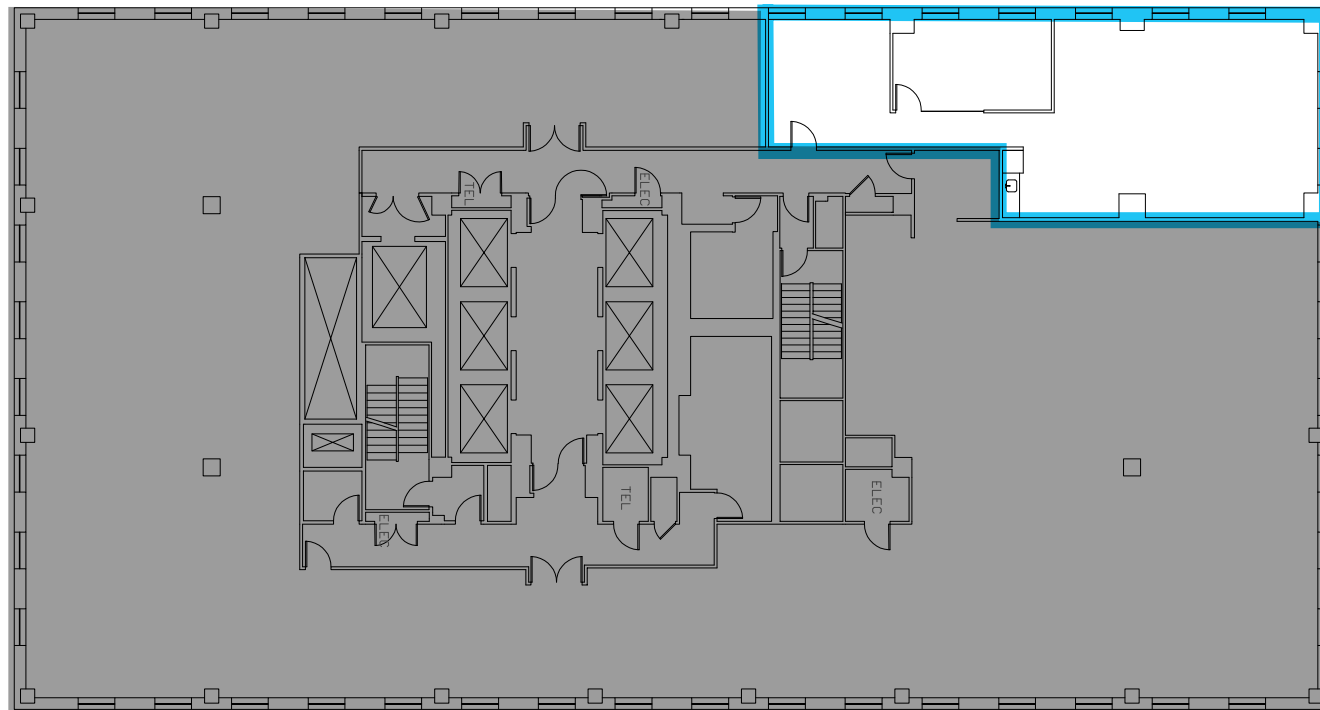
JENNA KINSINGER

Lic. 02034180
+1 415 772 0216
jenna.kinsinger@cbre.com

SUITE 3025
575 MARKET
1,848 RSF

FEATURES

- Available Now
- Excellent northwest facing views
- 2nd gen spec suite
- 1 conference room
- Kitchen



© 2020 CBRE, Inc. All rights reserved. This information has been obtained from sources believed reliable, but has not been verified for accuracy or completeness. You should conduct a careful, independent investigation of the property and verify all information. Any reliance on this information is solely at your own risk. CBRE and the CBRE logo are service marks of CBRE, Inc. All other marks displayed on this document are the property of their respective owners. Photos herein are the property of their respective owners. Use of these images without the express written consent of the owner is prohibited.

MARKET CENTER

555 & 575 Market St.
San Francisco, CA

FOR MORE INFORMATION CONTACT:

BILL CUMBELICH

Lic. 00533546
+1 415 291 8882
bill.cumbelich@cbre.com

TOM POGGI

Lic. 00969978
+1 415 291 8884
tom.poggi@cbre.com

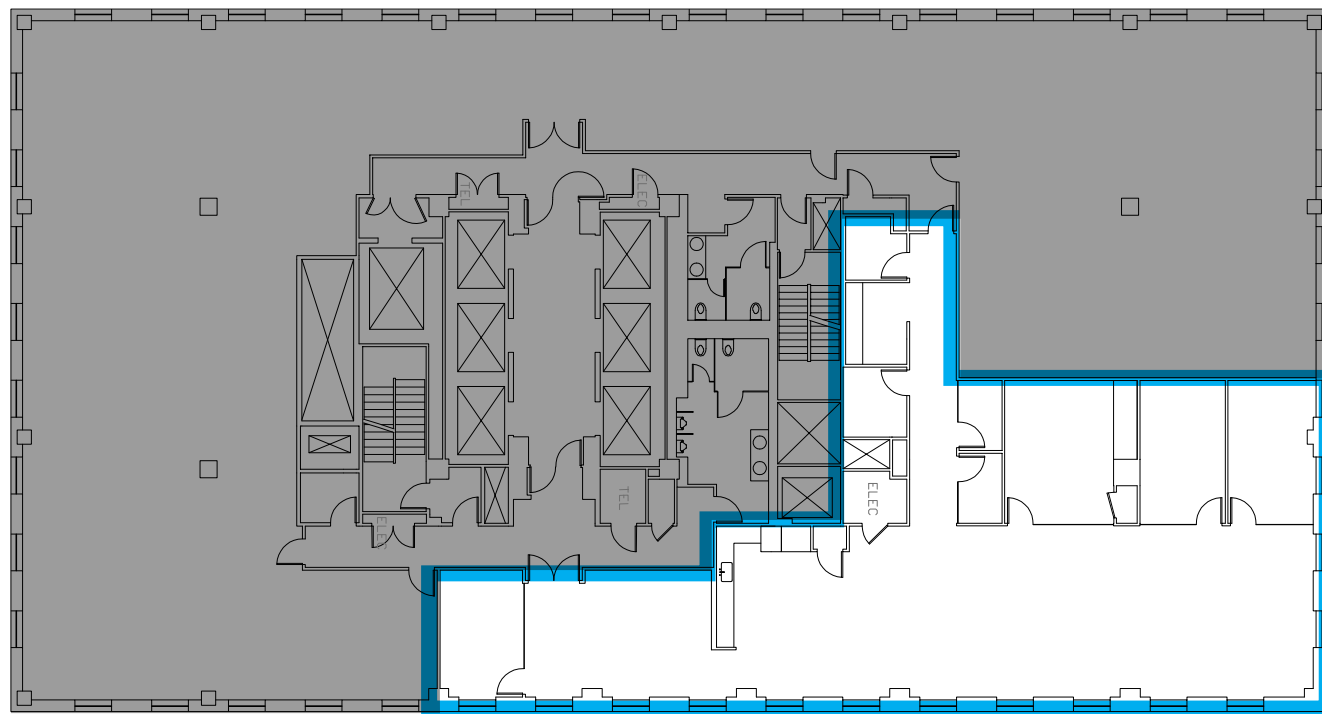
JENNA KINSINGER

Lic. 02034180
+1 415 772 0216
jenna.kinsinger@cbre.com

SUITE 2900
575 MARKET
4,409 RSF

FEATURES

- Available Now
- Great corner professional services suite with beautiful water and city views
- Double door identity
- 7 offices
- 1 conference room
- 1 break room



© 2020 CBRE, Inc. All rights reserved. This information has been obtained from sources believed reliable, but has not been verified for accuracy or completeness. You should conduct a careful, independent investigation of the property and verify all information. Any reliance on this information is solely at your own risk. CBRE and the CBRE logo are service marks of CBRE, Inc. All other marks displayed on this document are the property of their respective owners. Photos herein are the property of their respective owners. Use of these images without the express written consent of the owner is prohibited.

MARKET CENTER

555 & 575 Market St.
San Francisco, CA

FOR MORE INFORMATION CONTACT:

BILL CUMBELICH

Lic. 00533546
+1 415 291 8882
bill.cumbelich@cbre.com

TOM POGGI

Lic. 00969978
+1 415 291 8884
tom.poggi@cbre.com

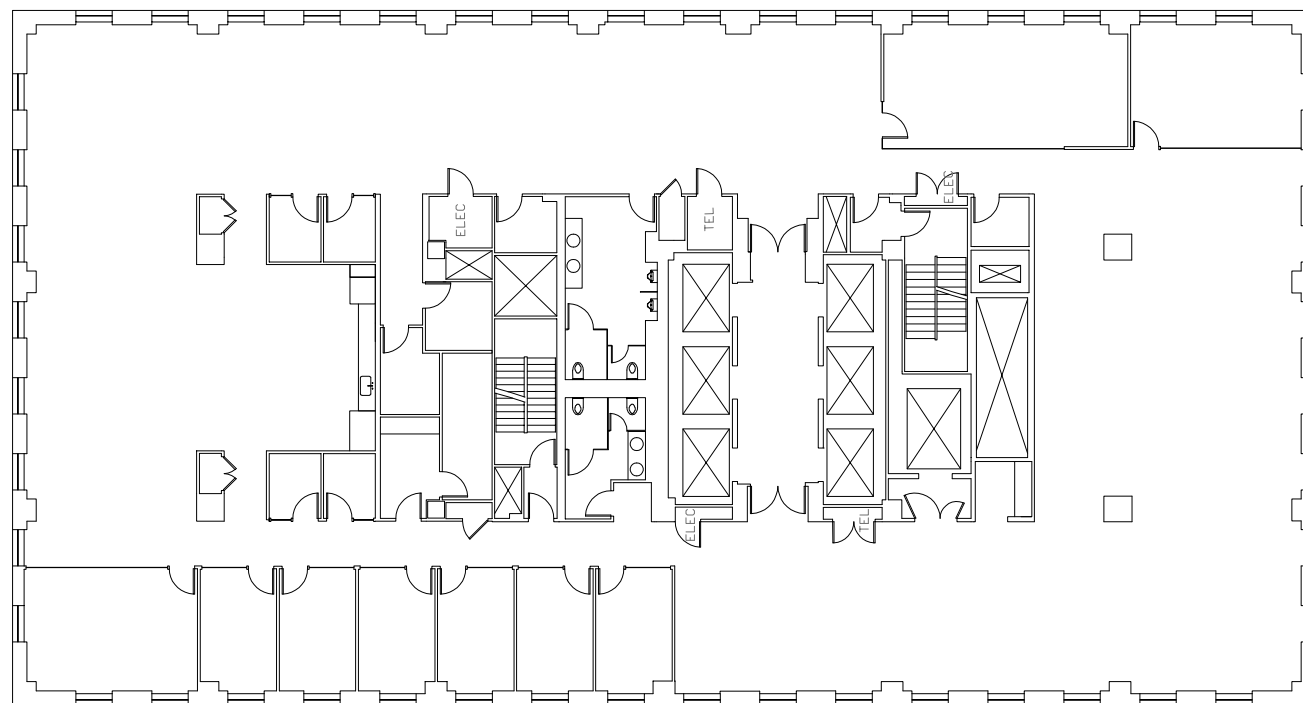
JENNA KINSINGER

Lic. 02034180
+1 415 772 0216
jenna.kinsinger@cbre.com

SUITE 2800
575 MARKET
12,885 RSF

FEATURES

- Available February 1, 2021
- New creative spec suite underway with exposed ceiling and polished concrete
- Incredible 360° views, highlighting water and both bridges
- 1 large conference room
- 8 offices/meeting rooms
- 4 phone rooms
- Open kitchen area



* Accommodates ±78 workstations

© 2020 CBRE, Inc. All rights reserved. This information has been obtained from sources believed reliable, but has not been verified for accuracy or completeness. You should conduct a careful, independent investigation of the property and verify all information. Any reliance on this information is solely at your own risk. CBRE and the CBRE logo are service marks of CBRE, Inc. All other marks displayed on this document are the property of their respective owners. Photos herein are the property of their respective owners. Use of these images without the express written consent of the owner is prohibited.

CBRE  **PARAMOUNT
GROUP, INC.**

MARKET CENTER

555 & 575 Market St.
San Francisco, CA

FOR MORE INFORMATION CONTACT:

BILL CUMBELICH

Lic. 00533546
+1 415 291 8882
bill.cumbelich@cbre.com

TOM POGGI

Lic. 00969978
+1 415 291 8884
tom.poggi@cbre.com

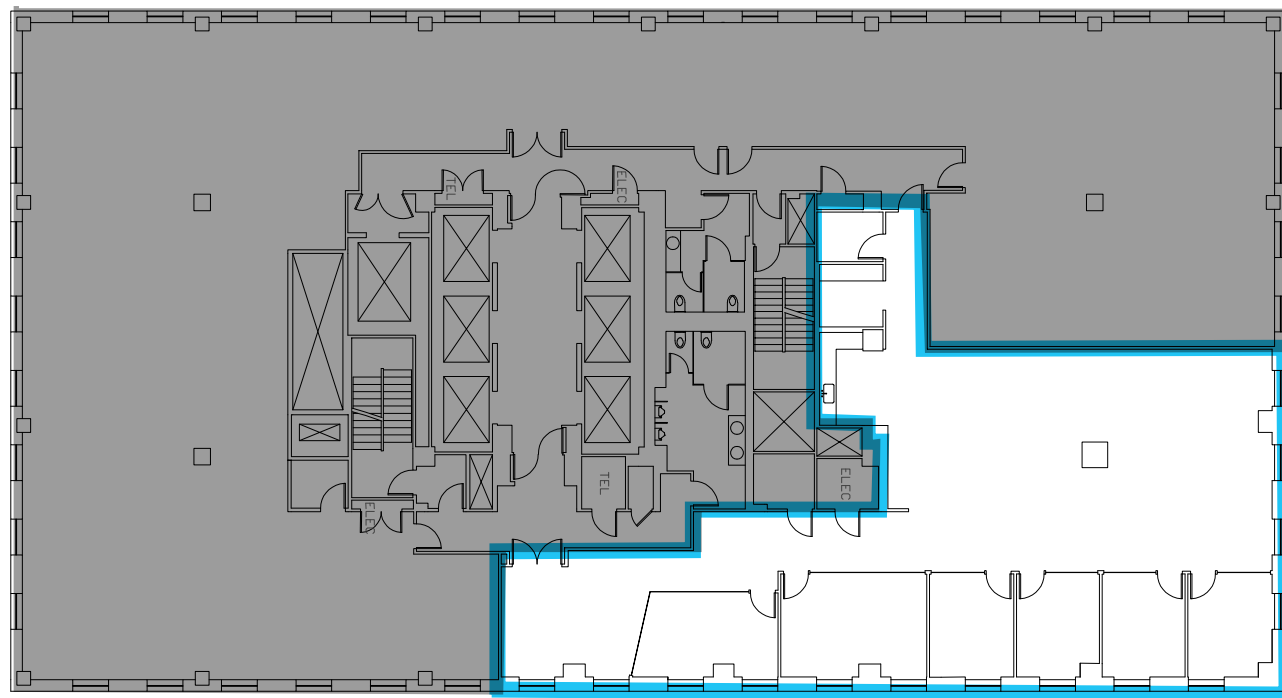
JENNA KINSINGER

Lic. 02034180
+1 415 772 0216
jenna.kinsinger@cbre.com

SUITE 2750
575 MARKET
4,377 RSF

FEATURES

- Available Now
- Double door identity off the elevator
- Market Street outlooks with natural lights
- 1 conference room
- 4 offices/meeting rooms with open area for workstations
- Kitchen with booth seating



© 2020 CBRE, Inc. All rights reserved. This information has been obtained from sources believed reliable, but has not been verified for accuracy or completeness. You should conduct a careful, independent investigation of the property and verify all information. Any reliance on this information is solely at your own risk. CBRE and the CBRE logo are service marks of CBRE, Inc. All other marks displayed on this document are the property of their respective owners. Photos herein are the property of their respective owners. Use of these images without the express written consent of the owner is prohibited.

MARKET CENTER

555 & 575 Market St.
San Francisco, CA

FOR MORE INFORMATION CONTACT:

BILL CUMBELICH

Lic. 00533546
+1 415 291 8882
bill.cumbelich@cbre.com

TOM POGGI

Lic. 00969978
+1 415 291 8884
tom.poggi@cbre.com

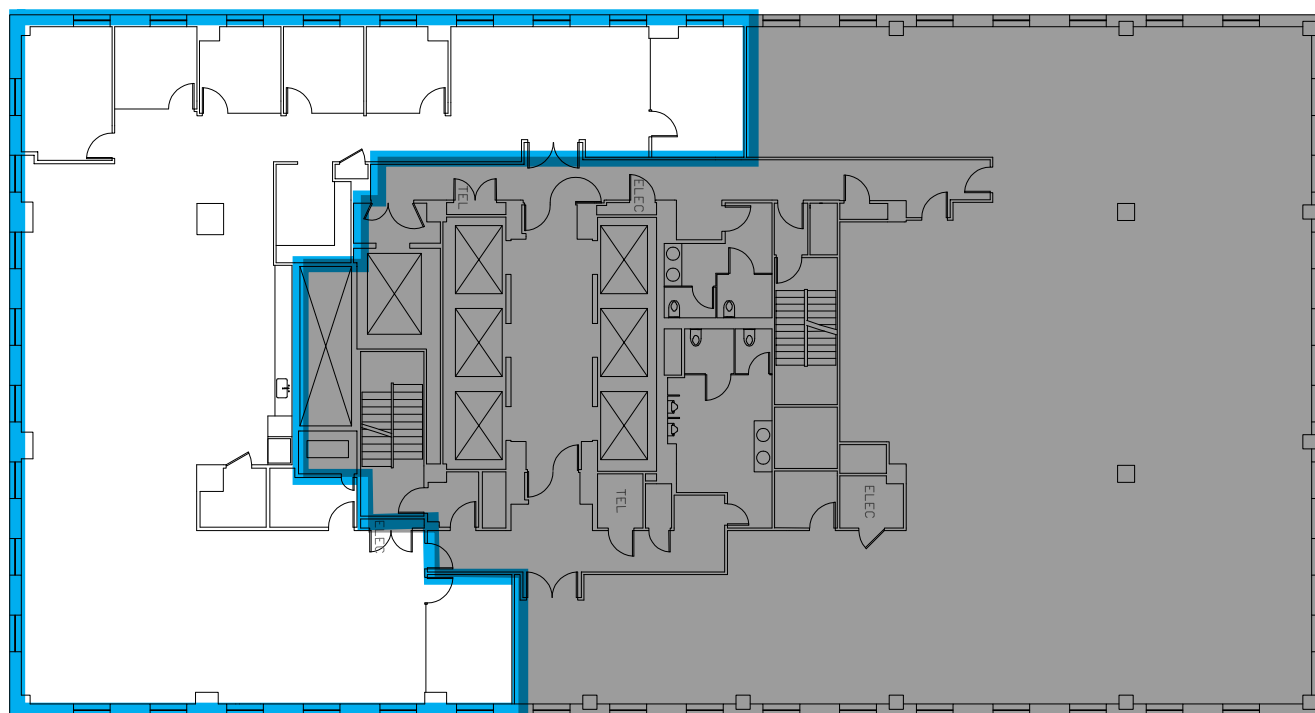
JENNA KINSINGER

Lic. 02034180
+1 415 772 0216
jenna.kinsinger@cbre.com

SUITE 2700
575 MARKET
5,629 RSF

FEATURES

- Available February 1, 2021
- New creative spec suite underway with exposed ceiling and polished concrete
- Great southwest facing views
- 3 conference rooms
- 4 offices/meeting rooms
- 1 phone room
- Open kitchen area



* Accommodates ±36 workstations

© 2020 CBRE, Inc. All rights reserved. This information has been obtained from sources believed reliable, but has not been verified for accuracy or completeness. You should conduct a careful, independent investigation of the property and verify all information. Any reliance on this information is solely at your own risk. CBRE and the CBRE logo are service marks of CBRE, Inc. All other marks displayed on this document are the property of their respective owners. Photos herein are the property of their respective owners. Use of these images without the express written consent of the owner is prohibited.

MARKET CENTER

555 & 575 Market St.
San Francisco, CA

FOR MORE INFORMATION CONTACT:

BILL CUMBELICH

Lic. 00533546
+1 415 291 8882
bill.cumbelich@cbre.com

TOM POGGI

Lic. 00969978
+1 415 291 8884
tom.poggi@cbre.com

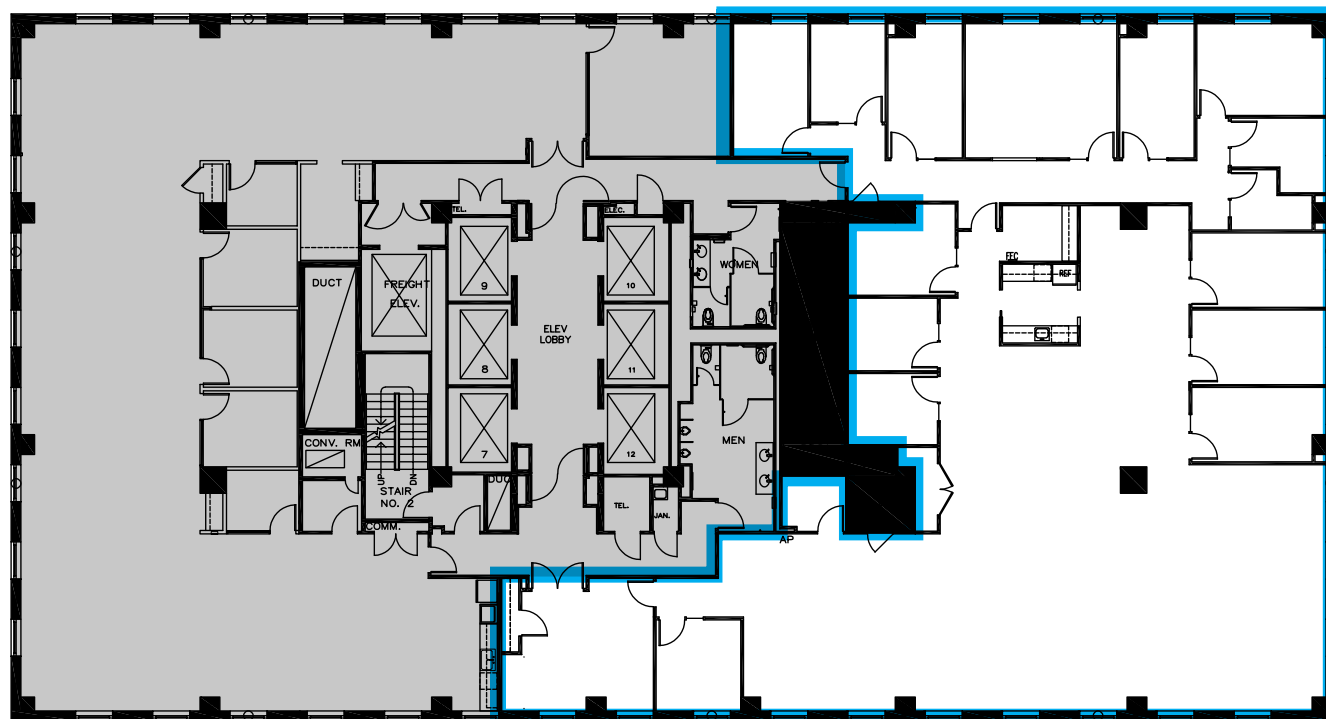
JENNA KINSINGER

Lic. 02034180
+1 415 772 0216
jenna.kinsinger@cbre.com

SUITE 2600
575 MARKET
7,412 RSF

FEATURES

- Available March 1, 2021
- Great water views and natural light
- 14 offices/meeting rooms
- Kitchenette



© 2020 CBRE, Inc. All rights reserved. This information has been obtained from sources believed reliable, but has not been verified for accuracy or completeness. You should conduct a careful, independent investigation of the property and verify all information. Any reliance on this information is solely at your own risk. CBRE and the CBRE logo are service marks of CBRE, Inc. All other marks displayed on this document are the property of their respective owners. Photos herein are the property of their respective owners. Use of these images without the express written consent of the owner is prohibited.

MARKET CENTER

555 & 575 Market St.
San Francisco, CA

FOR MORE INFORMATION CONTACT:

BILL CUMBELICH

Lic. 00533546
+1 415 291 8882
bill.cumbelich@cbre.com

TOM POGGI

Lic. 00969978
+1 415 291 8884
tom.poggi@cbre.com

JENNA KINSINGER

Lic. 02034180
+1 415 772 0216
jenna.kinsinger@cbre.com

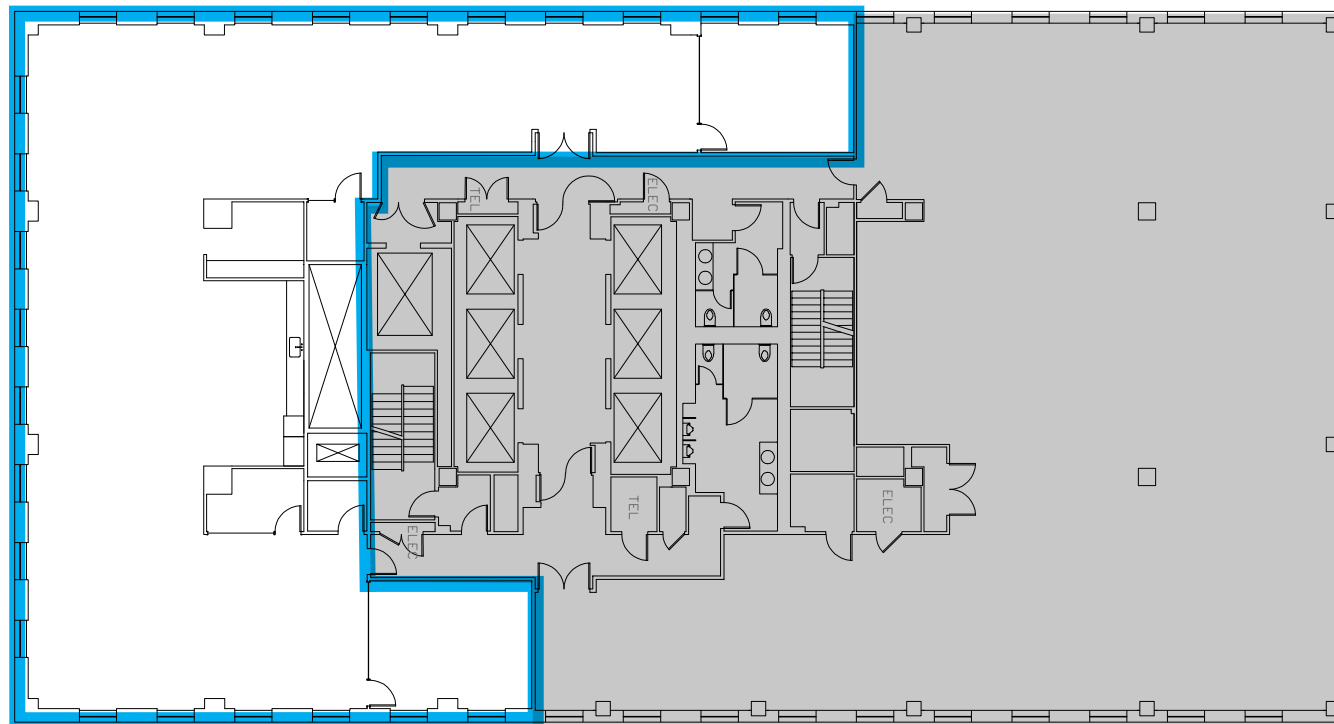
SUITE 2550
575 MARKET
5,887 RSF



TAKE THE VIRTUAL TOUR

FEATURES

- Available Now
- New spec suite completed
- 2 conference rooms
- 3 phone/meeting rooms
- Open kitchen
- IT room



© 2020 CBRE, Inc. All rights reserved. This information has been obtained from sources believed reliable, but has not been verified for accuracy or completeness. You should conduct a careful, independent investigation of the property and verify all information. Any reliance on this information is solely at your own risk. CBRE and the CBRE logo are service marks of CBRE, Inc. All other marks displayed on this document are the property of their respective owners. Photos herein are the property of their respective owners. Use of these images without the express written consent of the owner is prohibited.

MARKET CENTER

555 & 575 Market St.
San Francisco, CA

FOR MORE INFORMATION CONTACT:

BILL CUMBELICH

Lic. 00533546
+1 415 291 8882
bill.cumbelich@cbre.com

TOM POGGI

Lic. 00969978
+1 415 291 8884
tom.poggi@cbre.com

JENNA KINSINGER

Lic. 02034180
+1 415 772 0216
jenna.kinsinger@cbre.com

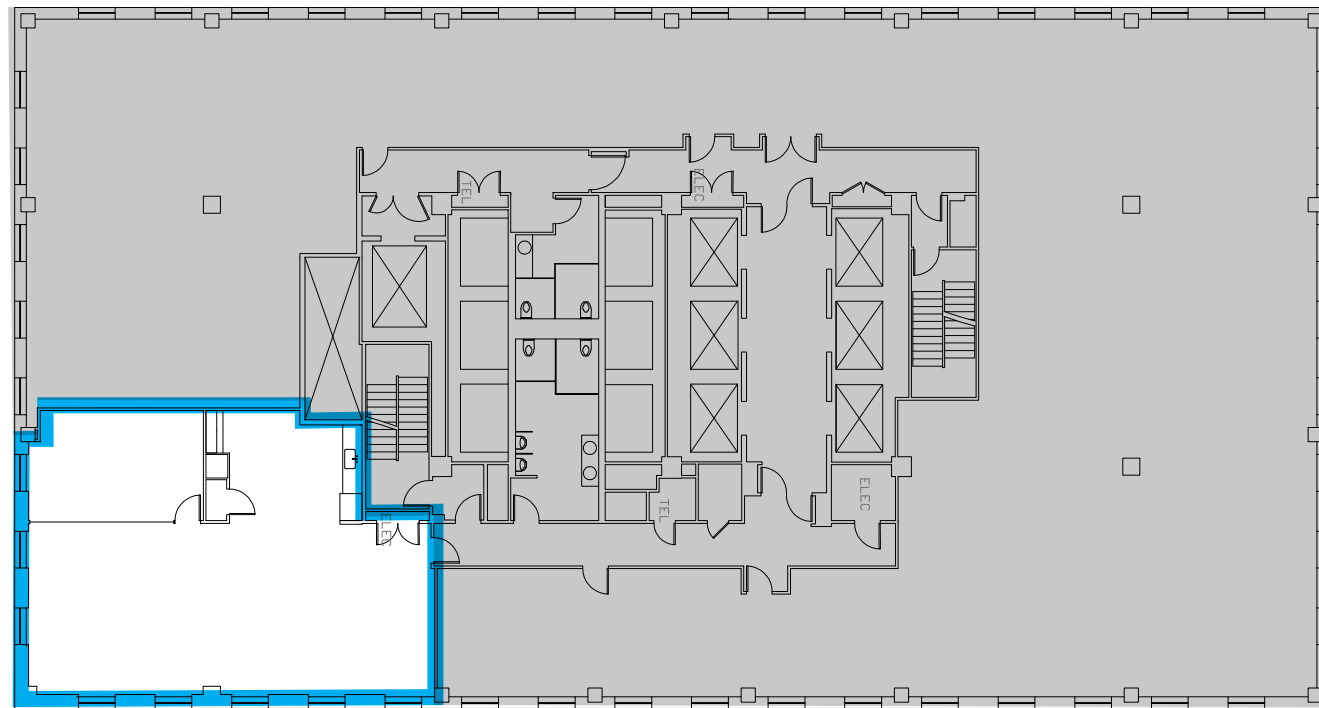
SUITE 2050
575 MARKET
2,155 RSF



TAKE THE VIRTUAL TOUR

FEATURES

- Available Now
- New spec suite completed
- 2 office/meeting rooms
- IT closet



* Accommodates ±17 workstations

© 2020 CBRE, Inc. All rights reserved. This information has been obtained from sources believed reliable, but has not been verified for accuracy or completeness. You should conduct a careful, independent investigation of the property and verify all information. Any reliance on this information is solely at your own risk. CBRE and the CBRE logo are service marks of CBRE, Inc. All other marks displayed on this document are the property of their respective owners. Photos herein are the property of their respective owners. Use of these images without the express written consent of the owner is prohibited.

MARKET CENTER

555 & 575 Market St.
San Francisco, CA

FOR MORE INFORMATION CONTACT:

BILL CUMBELICH

Lic. 00533546
+1 415 291 8882
bill.cumbelich@cbre.com

TOM POGGI

Lic. 00969978
+1 415 291 8884
tom.poggi@cbre.com

JENNA KINSINGER

Lic. 02034180
+1 415 772 0216
jenna.kinsinger@cbre.com

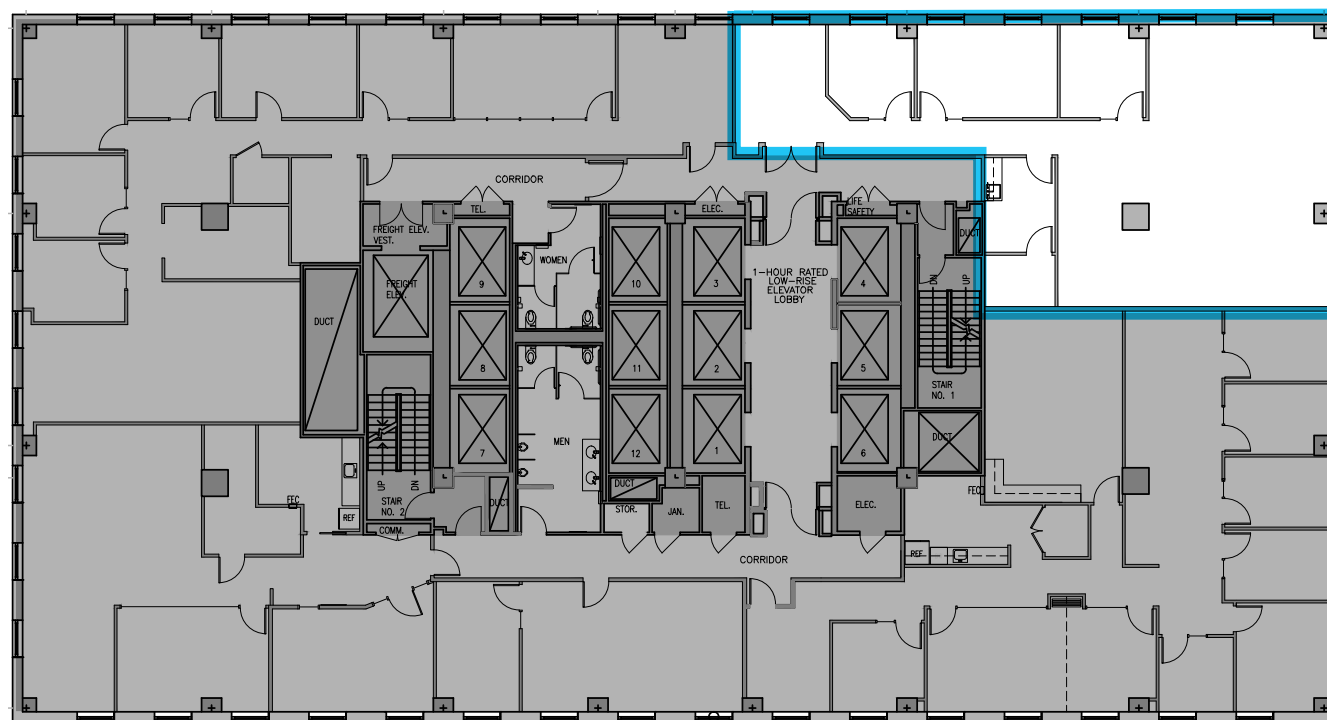
SUITE 2028
575 MARKET
2,545 RSF



TAKE THE VIRTUAL TOUR

FEATURES

- Available Now
- Great NW facing views with ample natural light
- Double door identity off the elevator
- 1 conference room
- 2 offices/meeting rooms with open area



© 2020 CBRE, Inc. All rights reserved. This information has been obtained from sources believed reliable, but has not been verified for accuracy or completeness. You should conduct a careful, independent investigation of the property and verify all information. Any reliance on this information is solely at your own risk. CBRE and the CBRE logo are service marks of CBRE, Inc. All other marks displayed on this document are the property of their respective owners. Photos herein are the property of their respective owners. Use of these images without the express written consent of the owner is prohibited.

MARKET CENTER

555 & 575 Market St.
San Francisco, CA

FOR MORE INFORMATION CONTACT:

BILL CUMBELICH

Lic. 00533546
+1 415 291 8882
bill.cumbelich@cbre.com

TOM POGGI

Lic. 00969978
+1 415 291 8884
tom.poggi@cbre.com

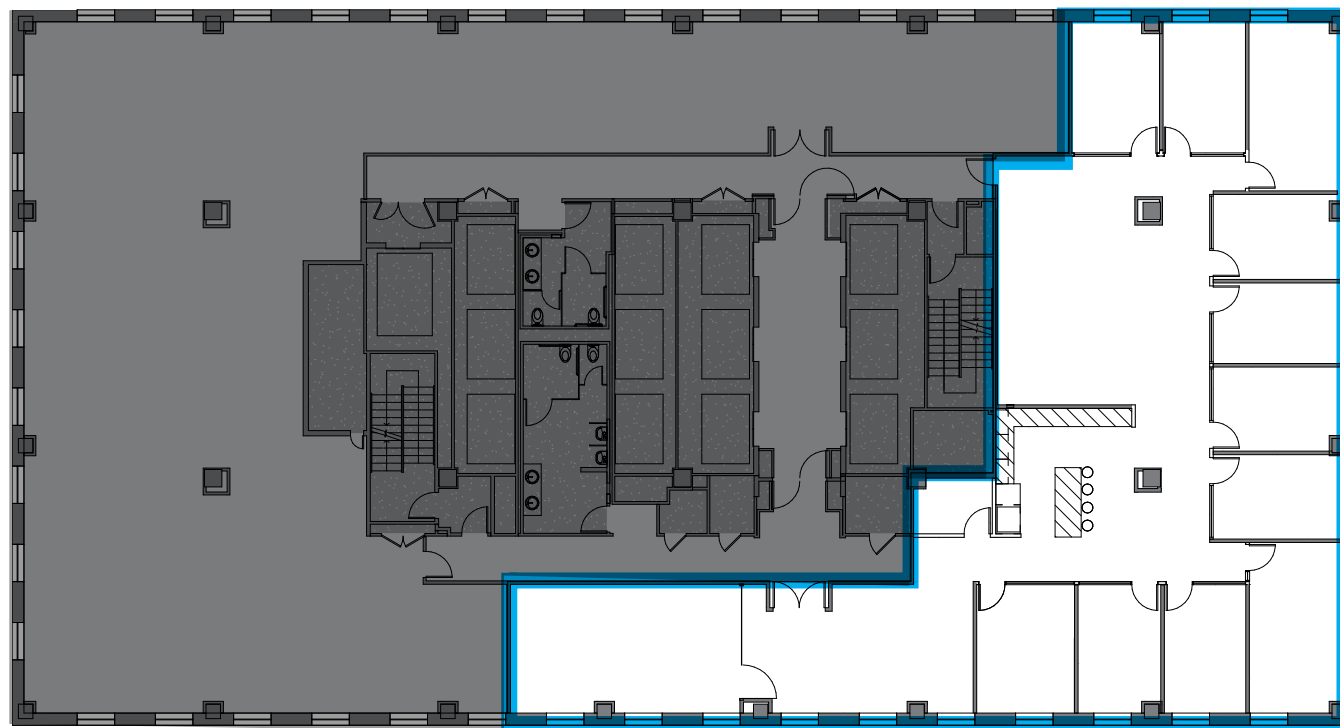
JENNA KINSINGER

Lic. 02034180
+1 415 772 0216
jenna.kinsinger@cbre.com

SUITE 1700
575 MARKET
5,821 RSF

FEATURES

- Available Now
- Professional services suite with new spec finishes
- Double door identity off the elevator
- 1 large conference room
- 11 offices
- Kitchen



© 2020 CBRE, Inc. All rights reserved. This information has been obtained from sources believed reliable, but has not been verified for accuracy or completeness. You should conduct a careful, independent investigation of the property and verify all information. Any reliance on this information is solely at your own risk. CBRE and the CBRE logo are service marks of CBRE, Inc. All other marks displayed on this document are the property of their respective owners. Photos herein are the property of their respective owners. Use of these images without the express written consent of the owner is prohibited.

MARKET CENTER

555 & 575 Market St.
San Francisco, CA

FOR MORE INFORMATION CONTACT:

BILL CUMBELICH

Lic. 00533546
+1 415 291 8882
bill.cumbelich@cbre.com

TOM POGGI

Lic. 00969978
+1 415 291 8884
tom.poggi@cbre.com

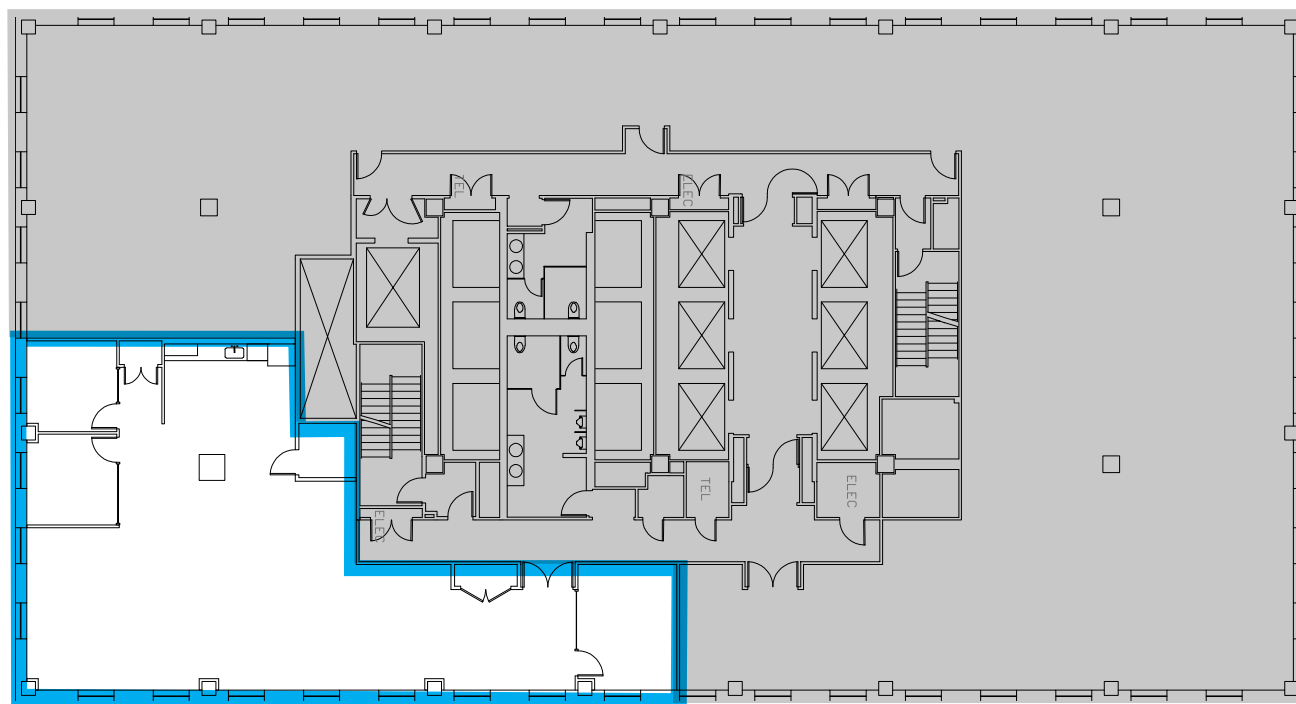
JENNA KINSINGER

Lic. 02034180
+1 415 772 0216
jenna.kinsinger@cbre.com

SUITE 850
575 MARKET
3,156 RSF

FEATURES

- Available Now
- Brand new spec suite underway with exposed ceiling in the reception area
- 1 conference room
- 2 office/meeting rooms
- Open kitchen



© 2020 CBRE, Inc. All rights reserved. This information has been obtained from sources believed reliable, but has not been verified for accuracy or completeness. You should conduct a careful, independent investigation of the property and verify all information. Any reliance on this information is solely at your own risk. CBRE and the CBRE logo are service marks of CBRE, Inc. All other marks displayed on this document are the property of their respective owners. Photos herein are the property of their respective owners. Use of these images without the express written consent of the owner is prohibited.

MARKET CENTER

555 & 575 Market St.
San Francisco, CA

FOR MORE INFORMATION CONTACT:

BILL CUMBELICH

Lic. 00533546
+1 415 291 8882
bill.cumbelich@cbre.com

TOM POGGI

Lic. 00969978
+1 415 291 8884
tom.poggi@cbre.com

JENNA KINSINGER

Lic. 02034180
+1 415 772 0216
jenna.kinsinger@cbre.com

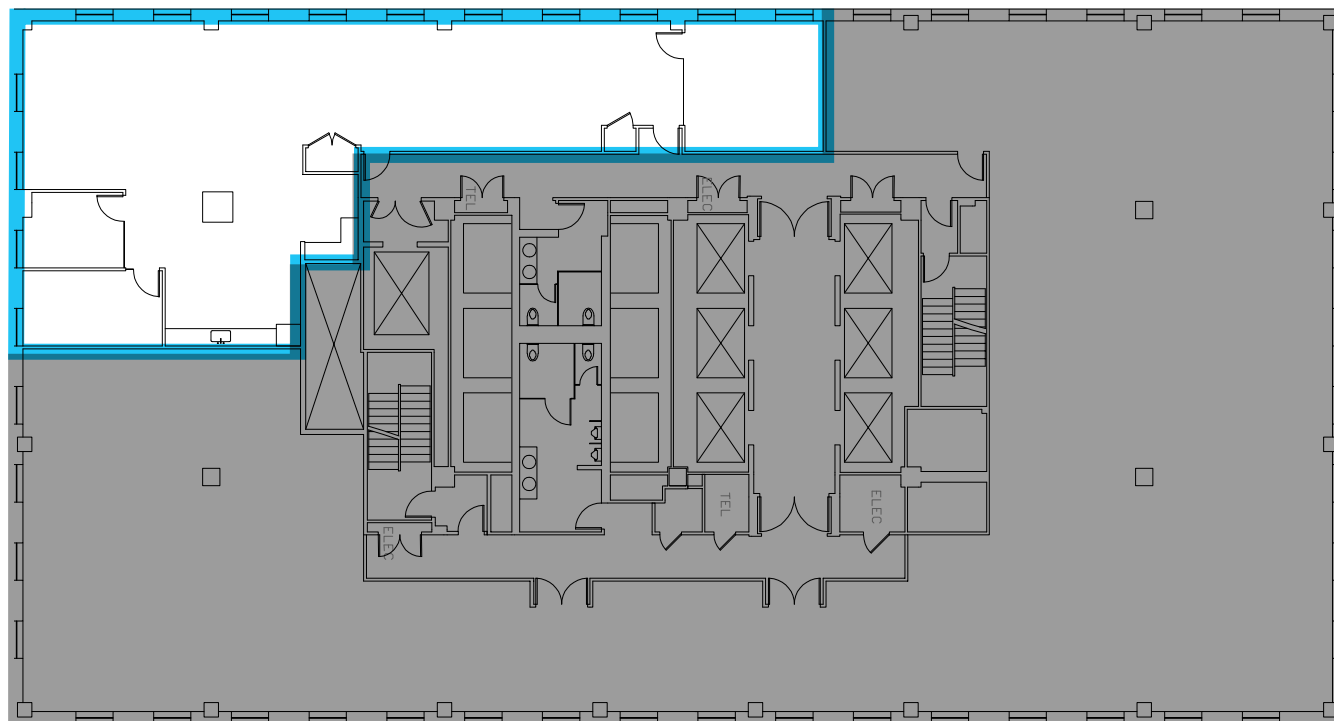
SUITE 825
575 MARKET
3,239 RSF



TAKE THE VIRTUAL TOUR

FEATURES

- Available Now
- Creative 2nd gen spec suite
- Exposed ceiling with polished concrete
- 1 conference room
- 2 offices/meeting rooms
- Open kitchen



© 2020 CBRE, Inc. All rights reserved. This information has been obtained from sources believed reliable, but has not been verified for accuracy or completeness. You should conduct a careful, independent investigation of the property and verify all information. Any reliance on this information is solely at your own risk. CBRE and the CBRE logo are service marks of CBRE, Inc. All other marks displayed on this document are the property of their respective owners. Photos herein are the property of their respective owners. Use of these images without the express written consent of the owner is prohibited.

MARKET CENTER

555 & 575 Market St.
San Francisco, CA

FOR MORE INFORMATION CONTACT:

BILL CUMBELICH

Lic. 00533546
+1 415 291 8882
bill.cumbelich@cbre.com

TOM POGGI

Lic. 00969978
+1 415 291 8884
tom.poggi@cbre.com

JENNA KINSINGER

Lic. 02034180
+1 415 772 0216
jenna.kinsinger@cbre.com

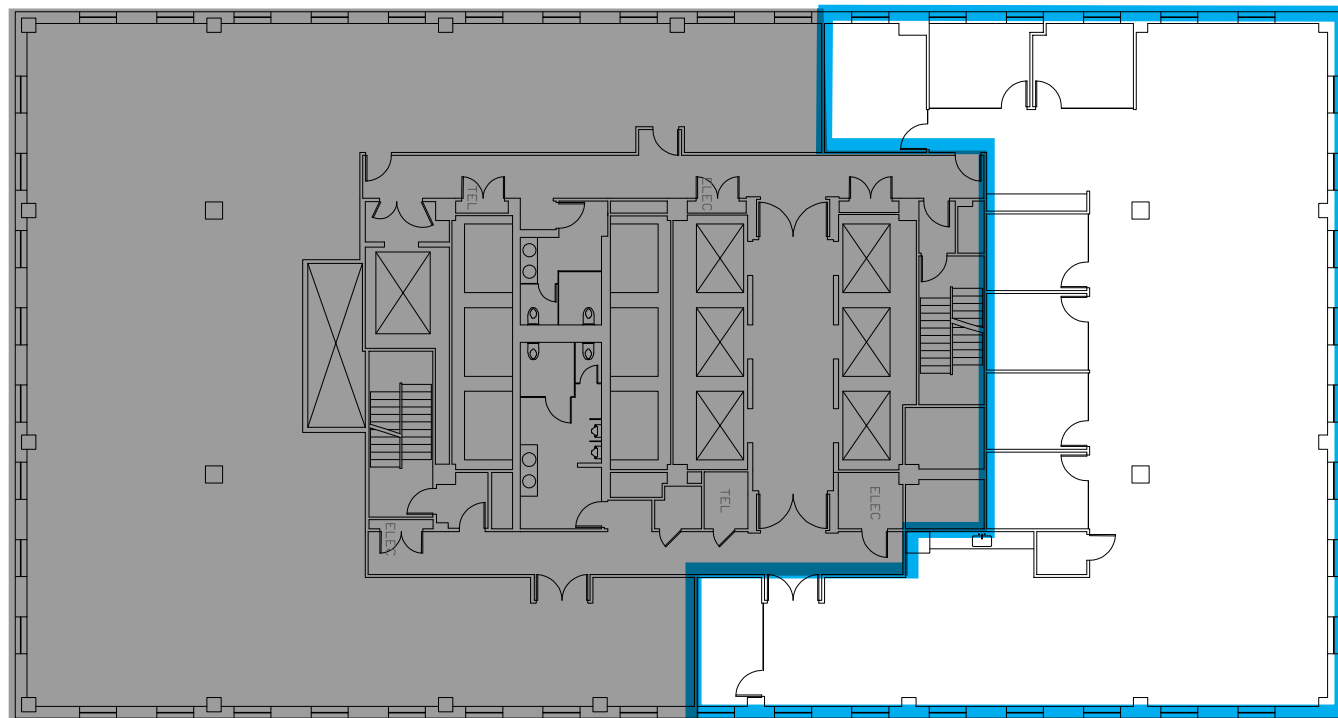
SUITE 800
575 MARKET
5,876 RSF



TAKE THE VIRTUAL TOUR

FEATURES

- Available Now
- Creative 2nd gen spec suite, exposed ceiling with polished concrete
- 2 conference rooms
- 3 offices/meeting rooms
- Open kitchen



© 2020 CBRE, Inc. All rights reserved. This information has been obtained from sources believed reliable, but has not been verified for accuracy or completeness. You should conduct a careful, independent investigation of the property and verify all information. Any reliance on this information is solely at your own risk. CBRE and the CBRE logo are service marks of CBRE, Inc. All other marks displayed on this document are the property of their respective owners. Photos herein are the property of their respective owners. Use of these images without the express written consent of the owner is prohibited.

MARKET CENTER

555 & 575 Market St.
San Francisco, CA

FOR MORE INFORMATION CONTACT:

BILL CUMBELICH

Lic. 00533546
+1 415 291 8882
bill.cumbelich@cbre.com

TOM POGGI

Lic. 00969978
+1 415 291 8884
tom.poggi@cbre.com

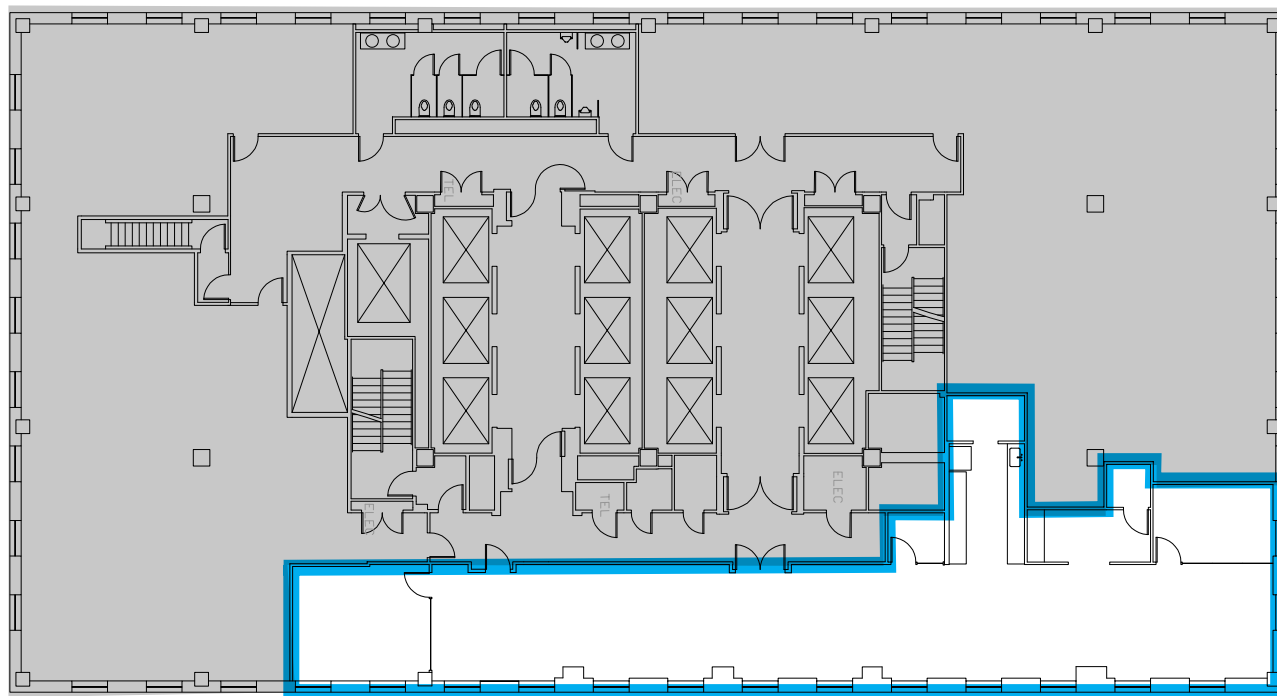
JENNA KINSINGER

Lic. 02034180
+1 415 772 0216
jenna.kinsinger@cbre.com

SUITE 375
575 MARKET
3,575 RSF

FEATURES

- Available Now
- Brand new spec suite underway
- Market Street outlooks
- 2 conference rooms
- Kitchenette
- Production area



© 2020 CBRE, Inc. All rights reserved. This information has been obtained from sources believed reliable, but has not been verified for accuracy or completeness. You should conduct a careful, independent investigation of the property and verify all information. Any reliance on this information is solely at your own risk. CBRE and the CBRE logo are service marks of CBRE, Inc. All other marks displayed on this document are the property of their respective owners. Photos herein are the property of their respective owners. Use of these images without the express written consent of the owner is prohibited.

MARKET CENTER

555 & 575 Market St.
San Francisco, CA

FOR MORE INFORMATION CONTACT:

BILL CUMBELICH

Lic. 00533546
+1 415 291 8882
bill.cumbelich@cbre.com

TOM POGGI

Lic. 00969978
+1 415 291 8884
tom.poggi@cbre.com

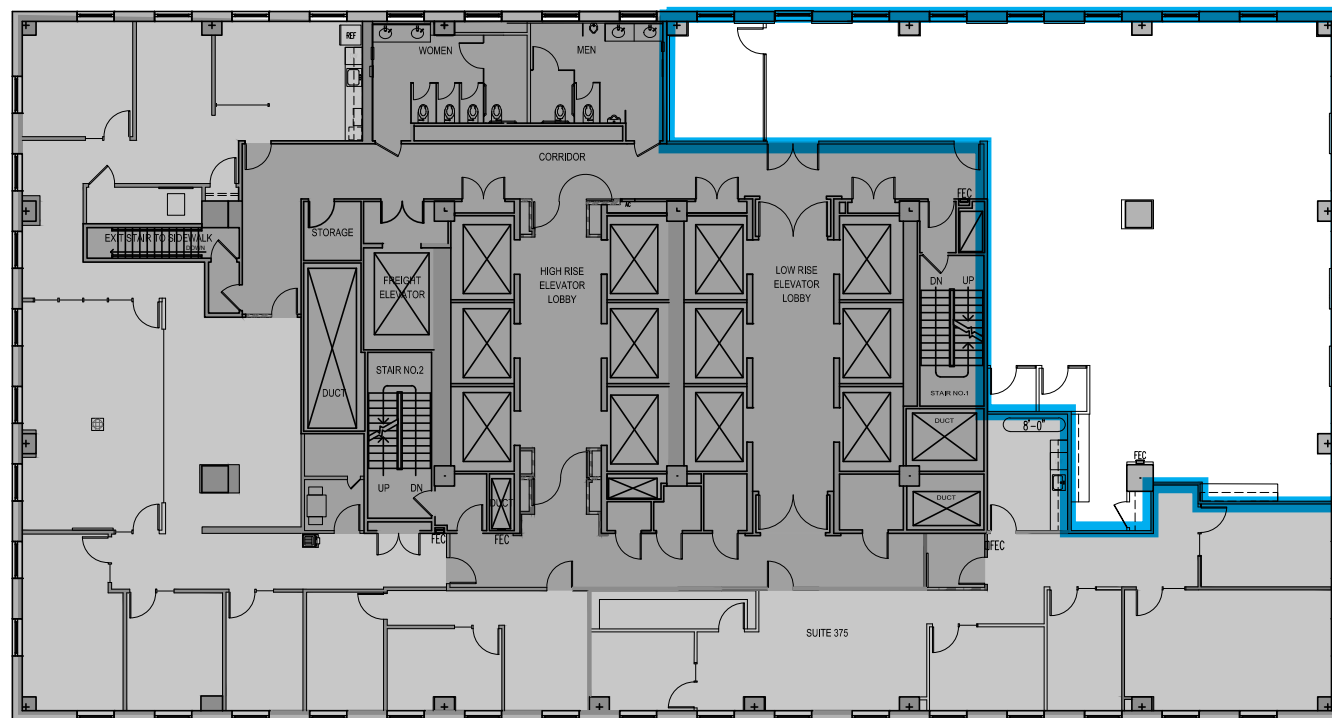
JENNA KINSINGER

Lic. 02034180
+1 415 772 0216
jenna.kinsinger@cbre.com

SUITE 300 575 MARKET 4,294 RSF

FEATURES

- Available May 1, 2021
- Great 2nd gen spec suite
- Market Street outlooks
- 1 conference room
- 2 phone rooms
- Kitchen



© 2020 CBRE, Inc. All rights reserved. This information has been obtained from sources believed reliable, but has not been verified for accuracy or completeness. You should conduct a careful, independent investigation of the property and verify all information. Any reliance on this information is solely at your own risk. CBRE and the CBRE logo are service marks of CBRE, Inc. All other marks displayed on this document are the property of their respective owners. Photos herein are the property of their respective owners. Use of these images without the express written consent of the owner is prohibited.