



# DESIRABLE **CONVENIENT** ELEGANT

One Monument Place is a desirable Class-A building offering a campus-like setting in the heart of Fairfax Corner

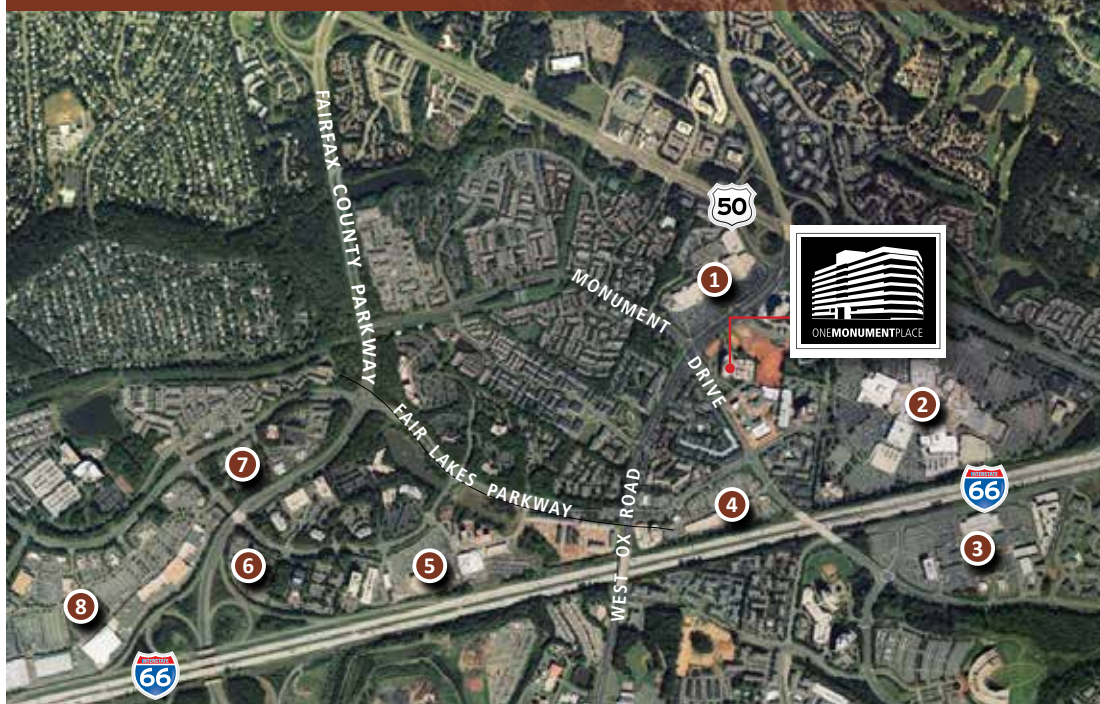
ONE MONUMENT PLACE | 12150 MONUMENT DRIVE | FAIRFAX, VIRGINIA



- New upper floor tenant lobbies
- Class A property with high-end finishes throughout the building: including mahogany, marble and granite
- \$29.00–\$31.00 per square foot, full service
- Exterior signage available for larger users
- Conveniently located in Fairfax Center with immediate access to I-66 and Route 50
- Adjacent to Fair Oaks Mall and within one mile of Fairfax Corner
- On-site fitness center and deli
- On-site property management
- Beautiful campus-like setting with a pond, fountain and gazebo
- Free structured parking at a ratio of 3.30/1,000 square feet



## AMENITIES



1. Fairfax Towne Center
2. Fair Oaks Mall
3. Fairfax Corner
4. Fair Lakes Promenade
5. East Market at Fair Lakes
6. Hyatt Fair Lakes
7. The Shops at Fair Lakes
8. Fair Lakes Center



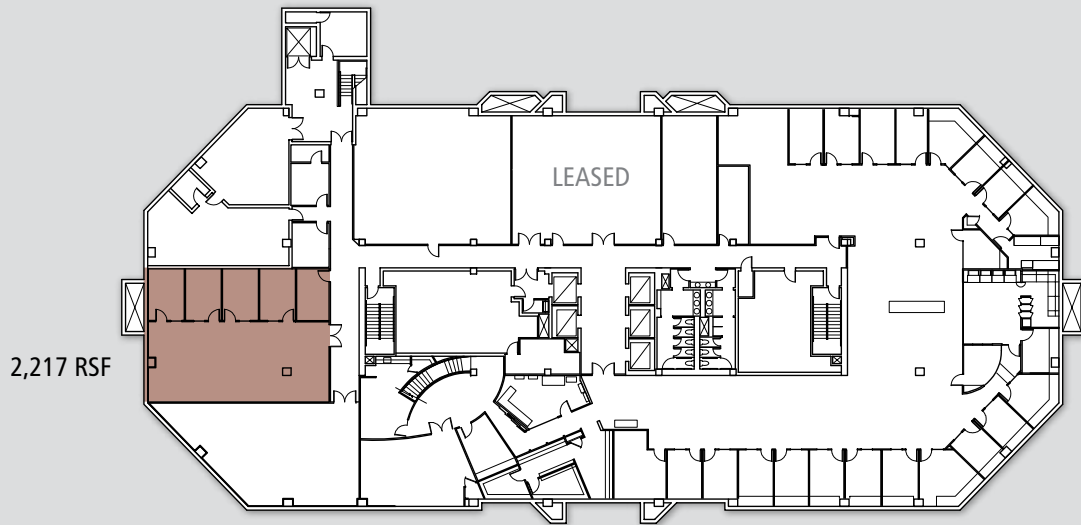
For lease information, please call David Goldstein or Marc Bassin at +1 703 485 8800

## Availability

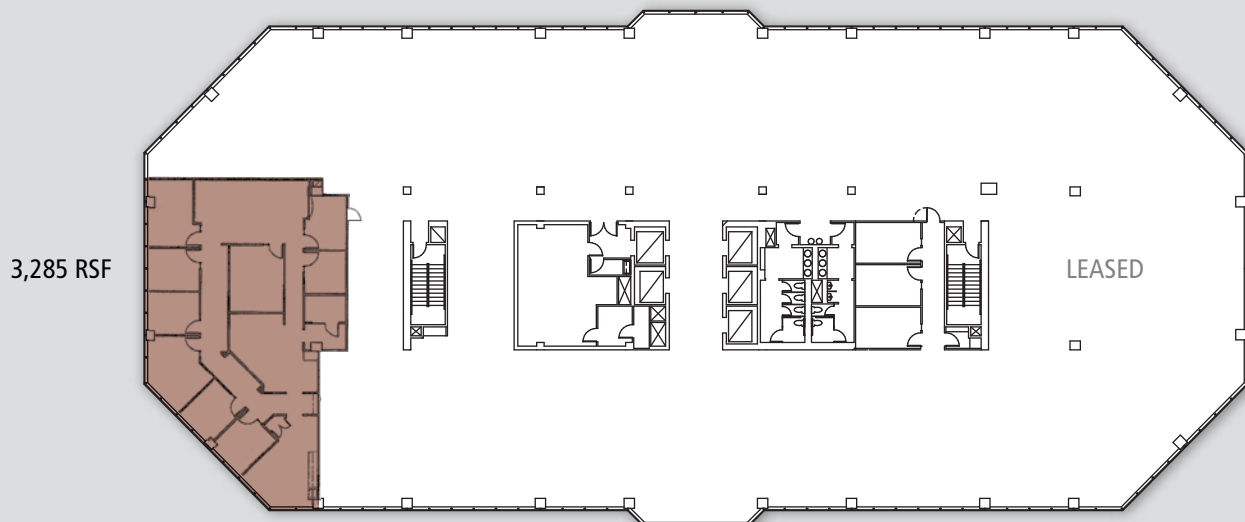
Floor	RSF	Availability
LL	2,217	Vacant
2nd	3,285	Vacant
5th	2,301	Vacant
6th	6,453	Vacant



## Lower Level

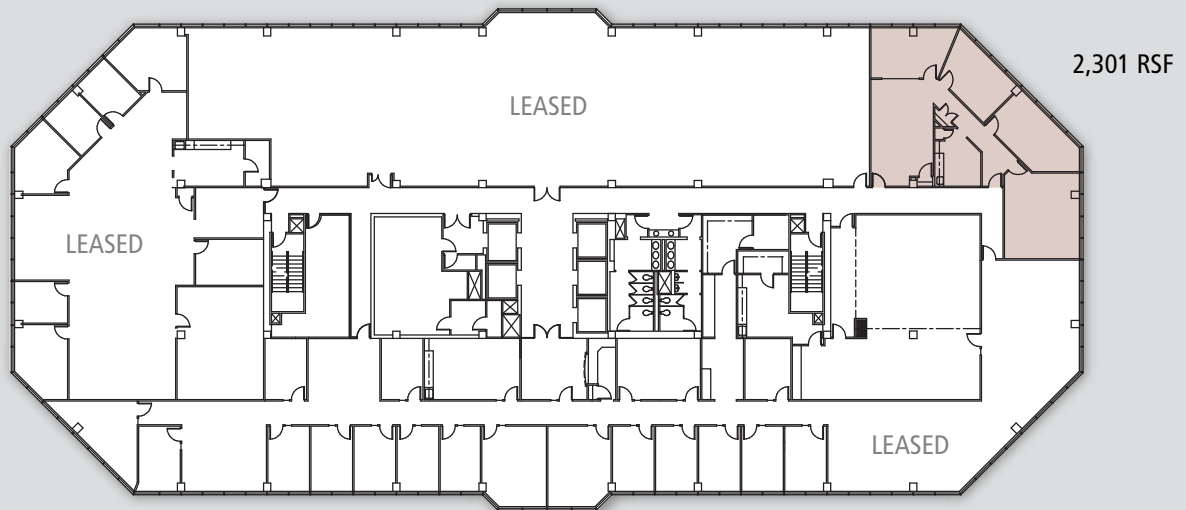


## 2nd Floor

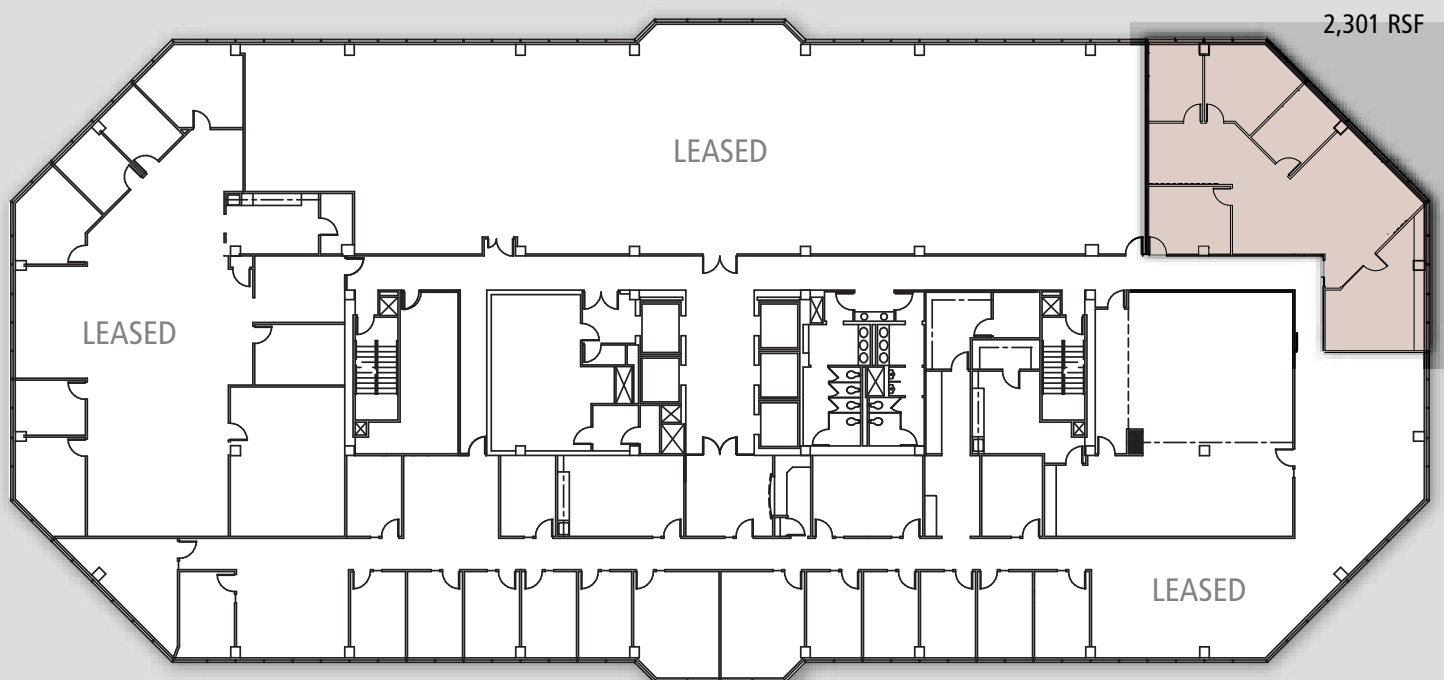


For lease information, please call David Goldstein or Marc Bassin at +1 703 485 8800

## 5th Floor-As built

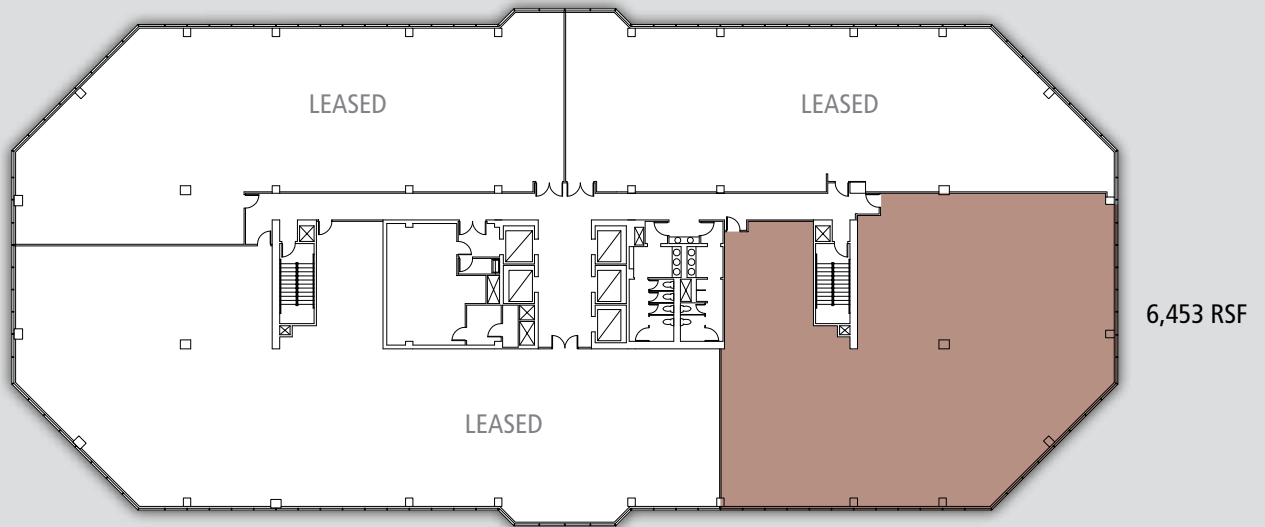


## 5th Floor Hypothetical





6th Floor- As built



6th Floor Hypothetical

