

# 180

MONTGOMERY



SIDRA  
180 MONTGOMERY

CBRE



# PROPERTY HIGHLIGHTS



Prime Financial District location



One block from BART/Muni



LEED Platinum certified building



UL Verified Healthy Building



Conference center



Bicycle storage



Showers and day lockers



Dining, shopping & retail nearby



















**180**  
MONTGOMERY

# 180

MONTGOMERY

# AVAILABILITY

	SUITE	RSF	DATE AVAILABLE	DESCRIPTION	VIRTUAL TOUR
4,235 RSF	2380	2,157	Now	Corner suite with double-door ID, 1 office, conference room, open kitchen. Furnished.	
	2370	2,078	Now	Former medical office. TI package available.	
9,227 RSF	2180	2,864	Now	Recently improved corner suite with 2 offices, conference room, kitchen. Furnished.	
	2150	1,669	Now	Primarily open layout with 1 office/meeting room, storage/copy room, elevator ID.	
	2100	4,794	Now	Double-door elevator ID, 9 offices, conference room, partial north bay views.	
	2000	12,494	Now	Full-floor creative suite with partially exposed ceiling, primarily open layout. Furnished.	
	1950	5,111	Now	New <b>spec suite</b> with double-door elevator ID, 11 offices, 3 conference rooms, kitchen.	
	1850	2,586	Now	Corner suite with double-door elevator ID, 1 office, 2 conference rooms. Furnished.	
	1800	5,162	Now	Recently improved suite with double-door elevator ID, 2 offices, conference room.	
	1750	5,443	Now	New <b>spec suite</b> with double-door ID, 2 offices, 2 conference rooms, open kitchen.	
	1675	4,180	Now	Corner suite with double-door elevator ID, 4 offices, 2 conference rooms, kitchen.	
	1550	2,705	Now	Recently improved suite with 2 offices, conference room, kitchen, storage.	
	1250	3,606	Now	New <b>spec suite</b> with double-door ID, 9 offices, conference room, open kitchen.	
	1100	12,234	Now	Efficient full floor with 28 offices, conference room, kitchen, nice city views.	
11,754 RSF	1050	5,648	Now	Recently improved suite with 1 large conference, 8 phone rooms, open kitchen.	
	1000	6,106	Now	Recently improved suite with double-door elevator ID, 3 offices, conference room.	
	750	6,896	Now	Recently improved suite with double-door elevator ID, 5 offices, 2 conference. Furnished.	
36,297 RSF	500	12,239	Now	Full-floor creative suite with partially exposed ceiling and primarily open layout.	
	400	11,727	Now	Efficient full floor with 21 offices/meeting rooms, kitchen, open area. Furnished.	
	300	12,331	Now	Efficient full floor with 19 offices/meeting rooms, kitchen, open area. Furnished.	

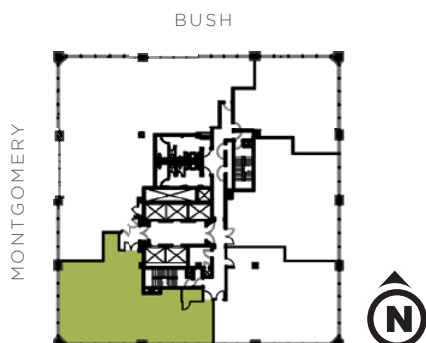
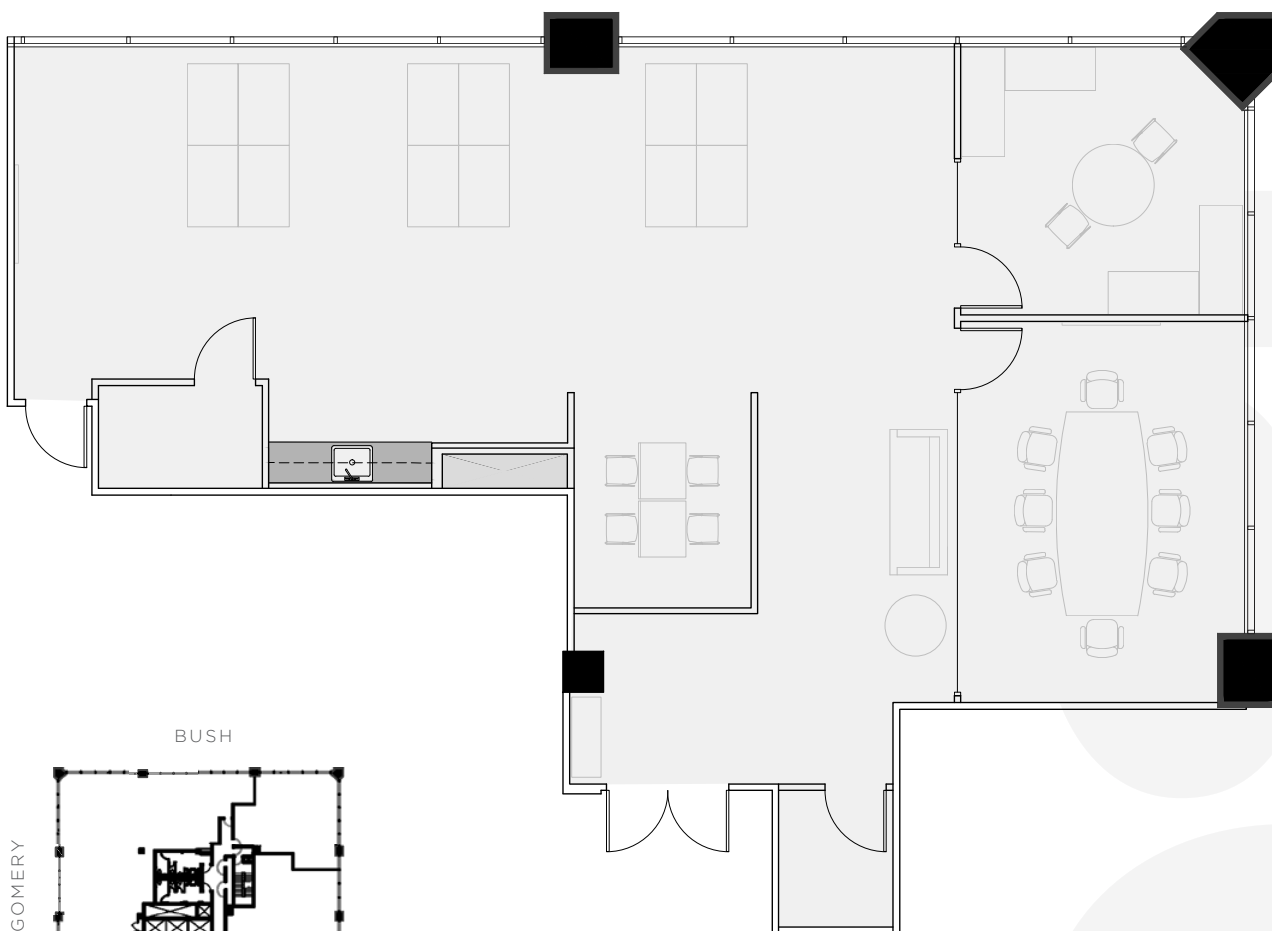
± 2,157 RSF

## SPACE FEATURES

- + Recently improved corner suite
- + Double-door identity
- + 1 office/meeting room
- + Conference room
- + Open kitchen, IT room
- + Open area with workstations
- + Furnished
- + Available now

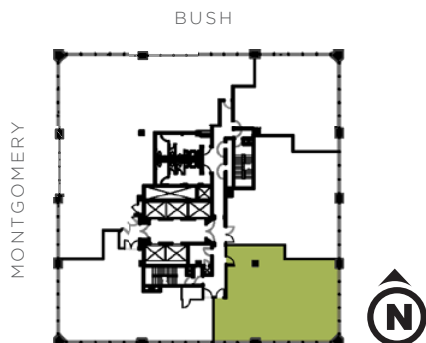
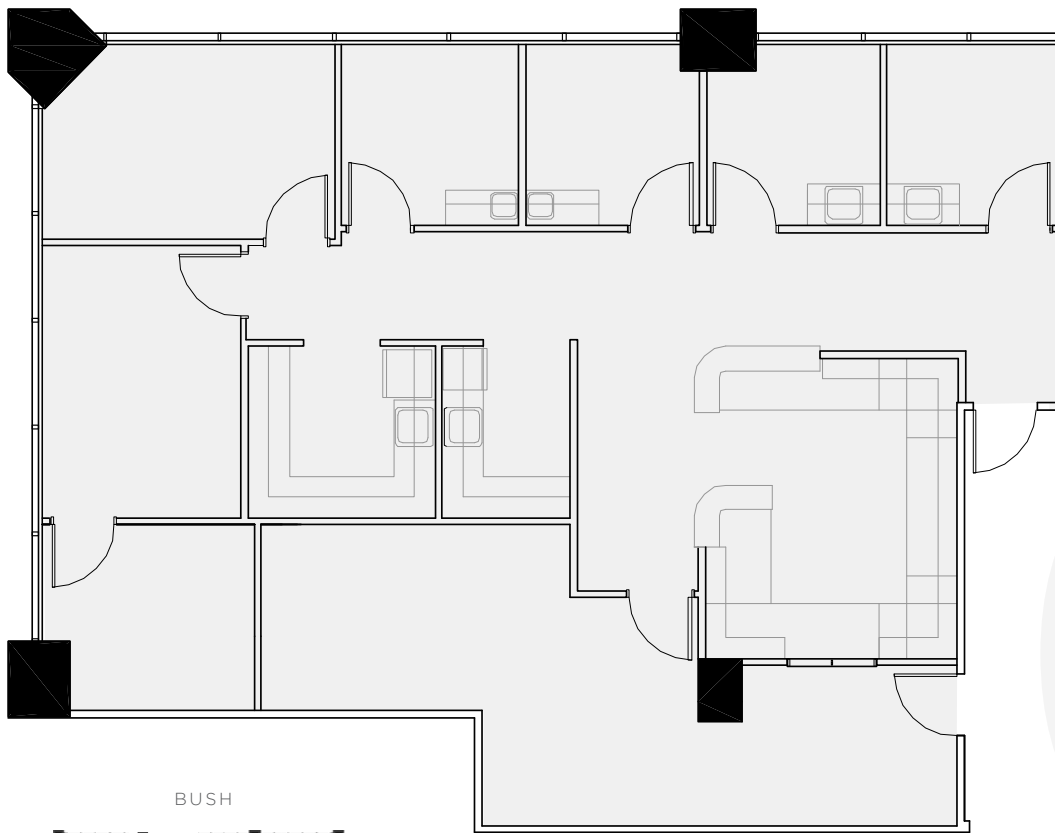


TAKE A  
VIRTUAL TOUR



## SPACE FEATURES

- + Former medical office
- + TI package available
- + Available now



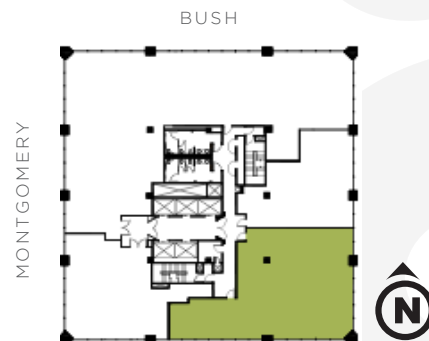
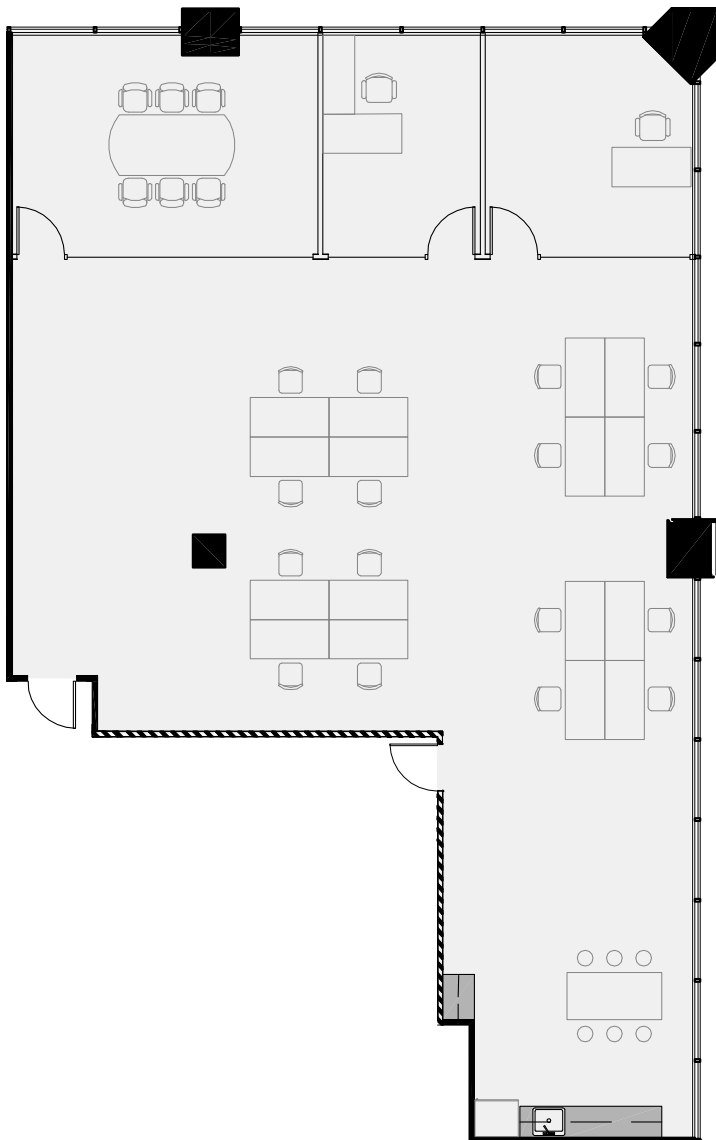
± 2,864 RSF

## SPACE FEATURES

- + Recently improved corner suite
- + Elevator identity
- + 2 offices/meeting rooms
- + Conference room
- + Open kitchen
- + Open area with 16 workstations
- + Furnished
- + Available now



TAKE A  
VIRTUAL TOUR



# SUITE 2150

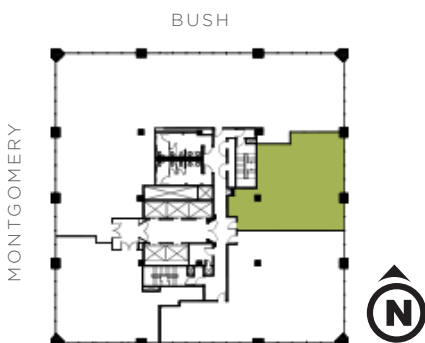
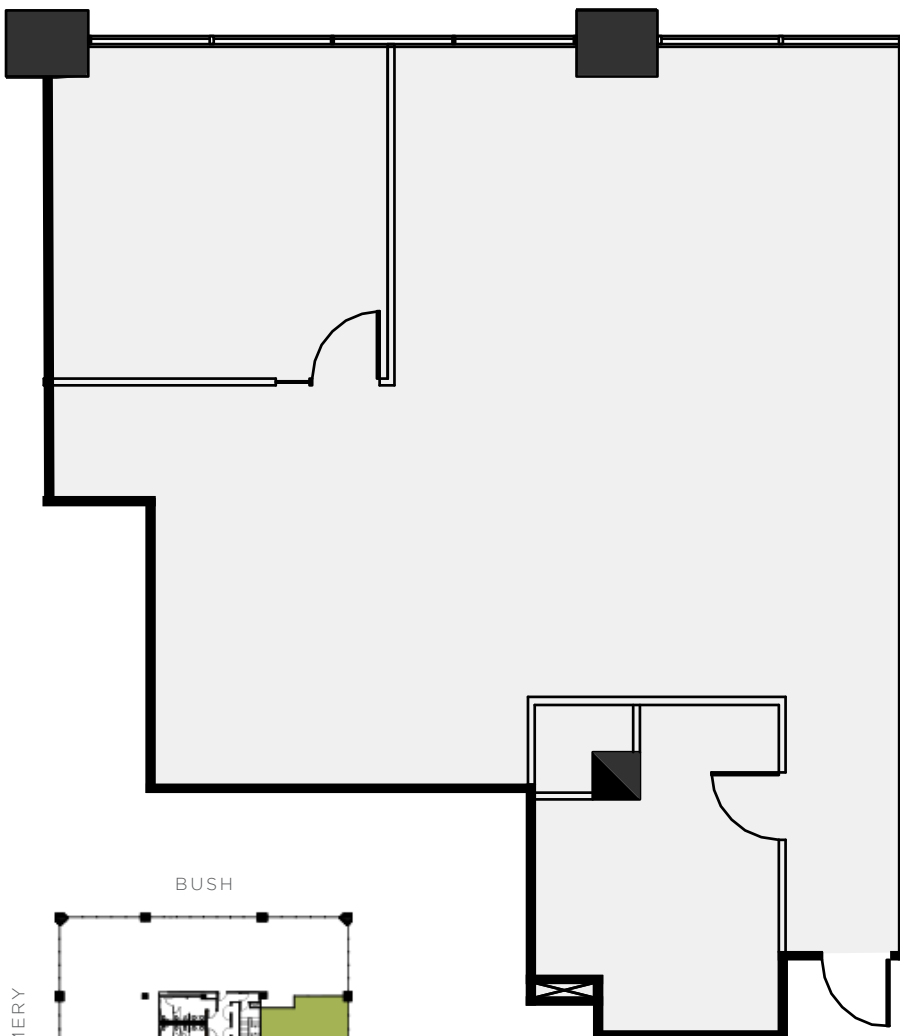
± 1,669 RSF

## SPACE FEATURES

- + Primarily open layout
- + 1 office/meeting room
- + Storage/copy room
- + Ample natural light
- + Elevator identity
- + Available now



TAKE A  
VIRTUAL TOUR



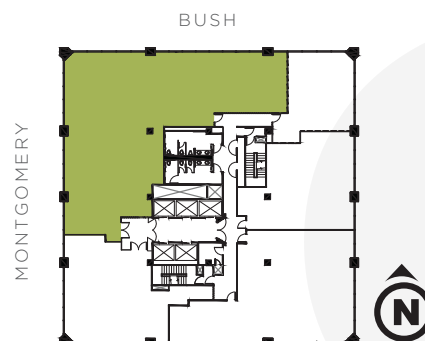
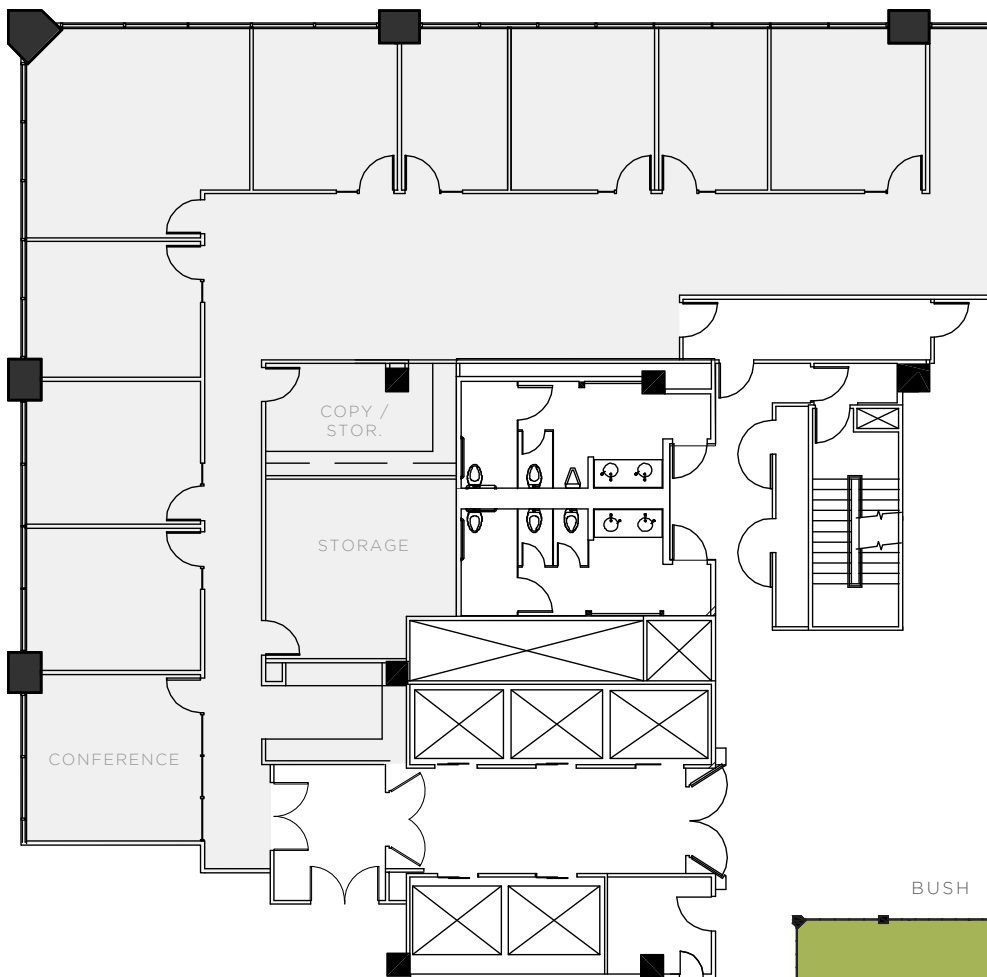
± 4,794 RSF

## SPACE FEATURES

- + Double-door elevator identity
- + Partial north bay views
- + 9 offices/meeting rooms
- + Conference room
- + Storage/copy room
- + Available now



TAKE A  
VIRTUAL TOUR





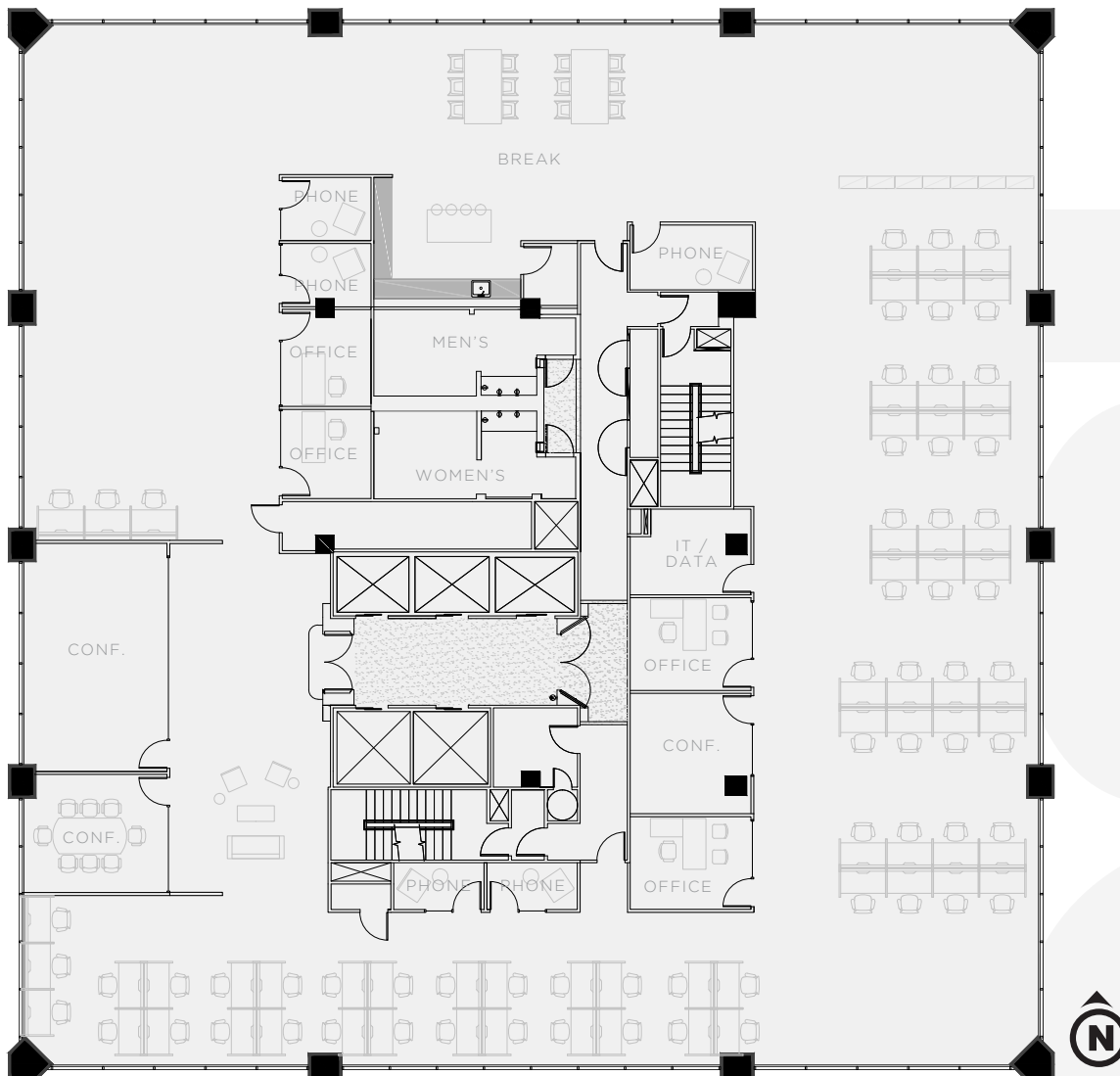
± 12,494 RSF

## SPACE FEATURES

- + Full-floor creative suite
- + Partially exposed ceiling, concrete floors
- + 4 offices/meeting rooms
- + 3 conference rooms
- + 5 phone rooms
- + Open kitchen/break area
- + Partially furnished
- + Available now



TAKE A  
VIRTUAL TOUR



# 180

MONTGOMERY

# SUITE 1950

± 5,111 RSF

## SPACE FEATURES

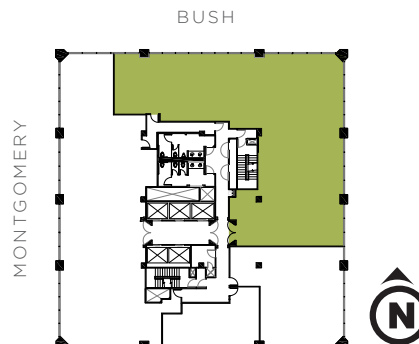
- + New spec suite
- + Double-door elevator identity
- + 11 offices/meeting rooms
- + 3 conference rooms
- + Open kitchen, IT room
- + Open area for workstations
- + Nice city views
- + Available now



TAKE A  
VIRTUAL TOUR



FURNITURE NOT INCLUDED



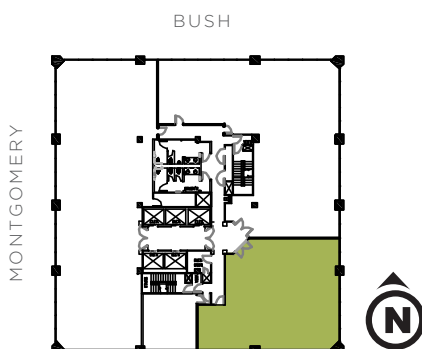
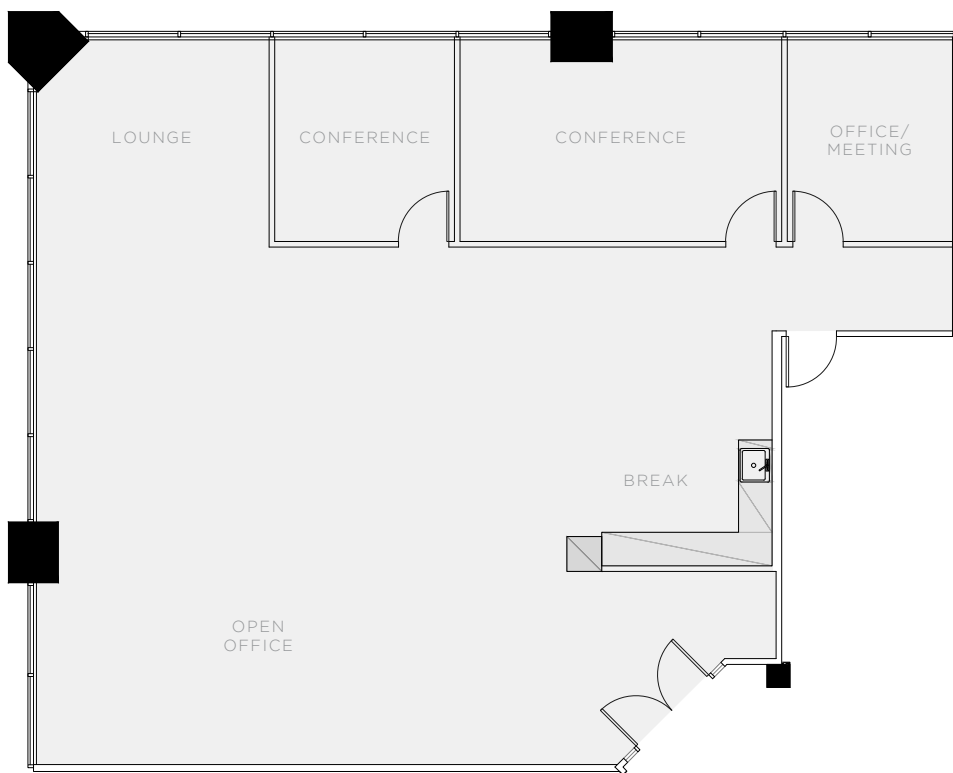
± 2,586 RSF

## SPACE FEATURES

- + Recently improved corner suite
- + Double-door elevator identity
- + 1 office/meeting room
- + 2 conference rooms
- + Open kitchen, lounge
- + Open area with 19 workstations
- + Furnished
- + Available now



TAKE A  
VIRTUAL TOUR



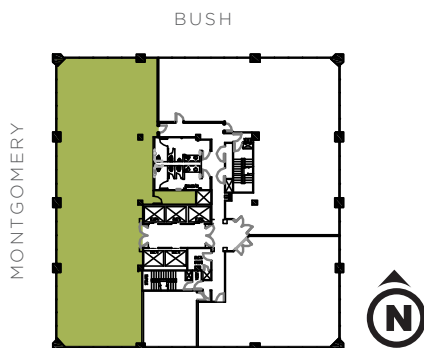
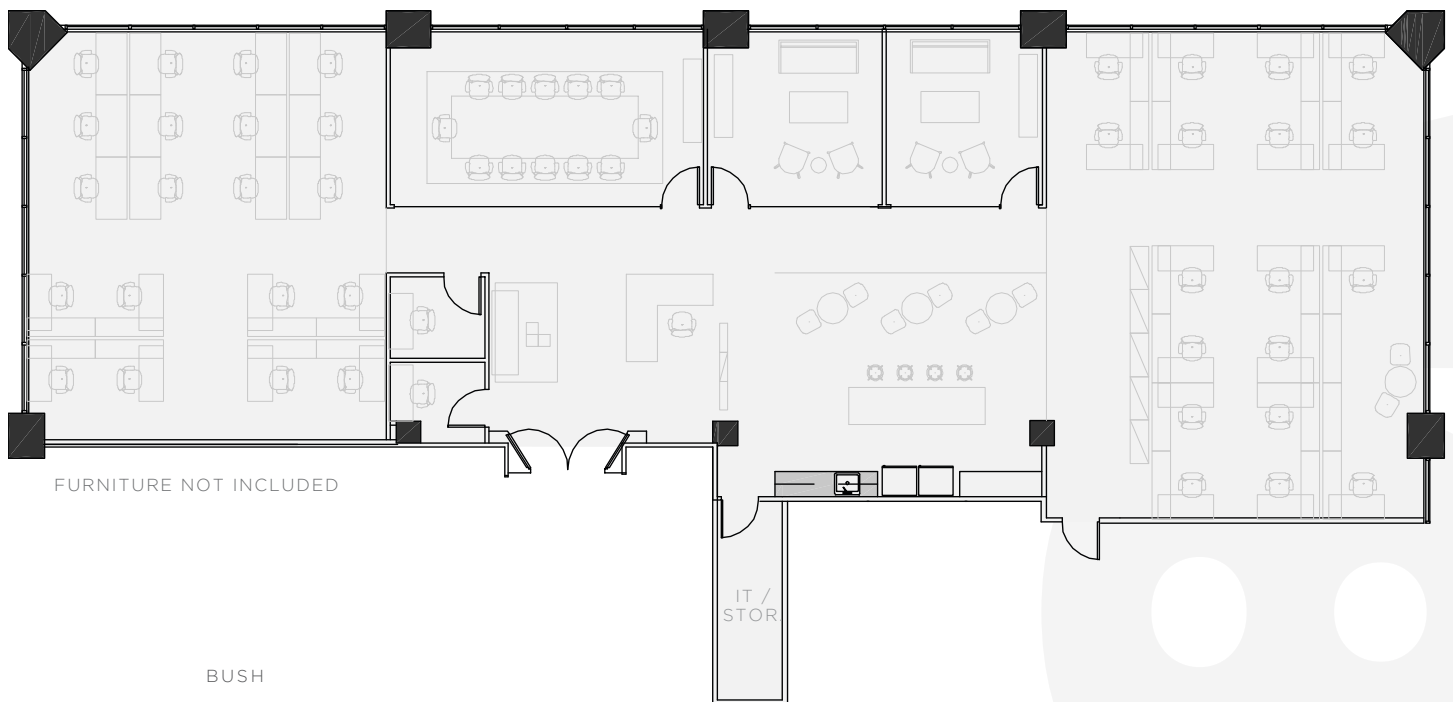
± 5,162 RSF

## SPACE FEATURES

- + Recently improved suite
- + Double-door elevator identity
- + 2 offices/meeting rooms
- + Conference room
- + 2 phone rooms
- + Open kitchen
- + Nice city views
- + Available now



TAKE A  
VIRTUAL TOUR





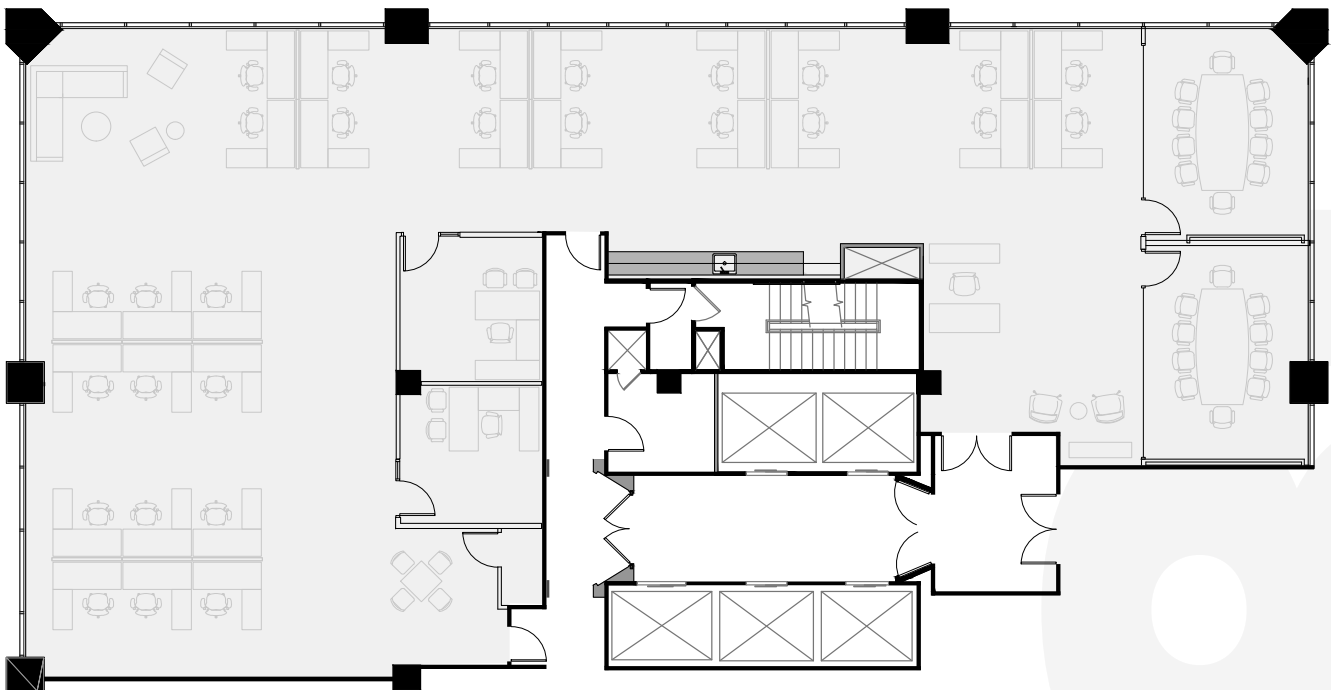
± 5,443 RSF

## SPACE FEATURES

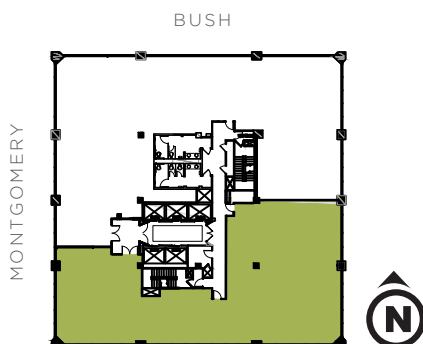
- + New spec suite
- + Double-door identity
- + 2 offices/meeting rooms
- + 2 conference rooms
- + Open kitchen
- + Open area for workstations
- + Nice city views
- + Available now



TAKE A  
VIRTUAL TOUR



FURNITURE NOT INCLUDED



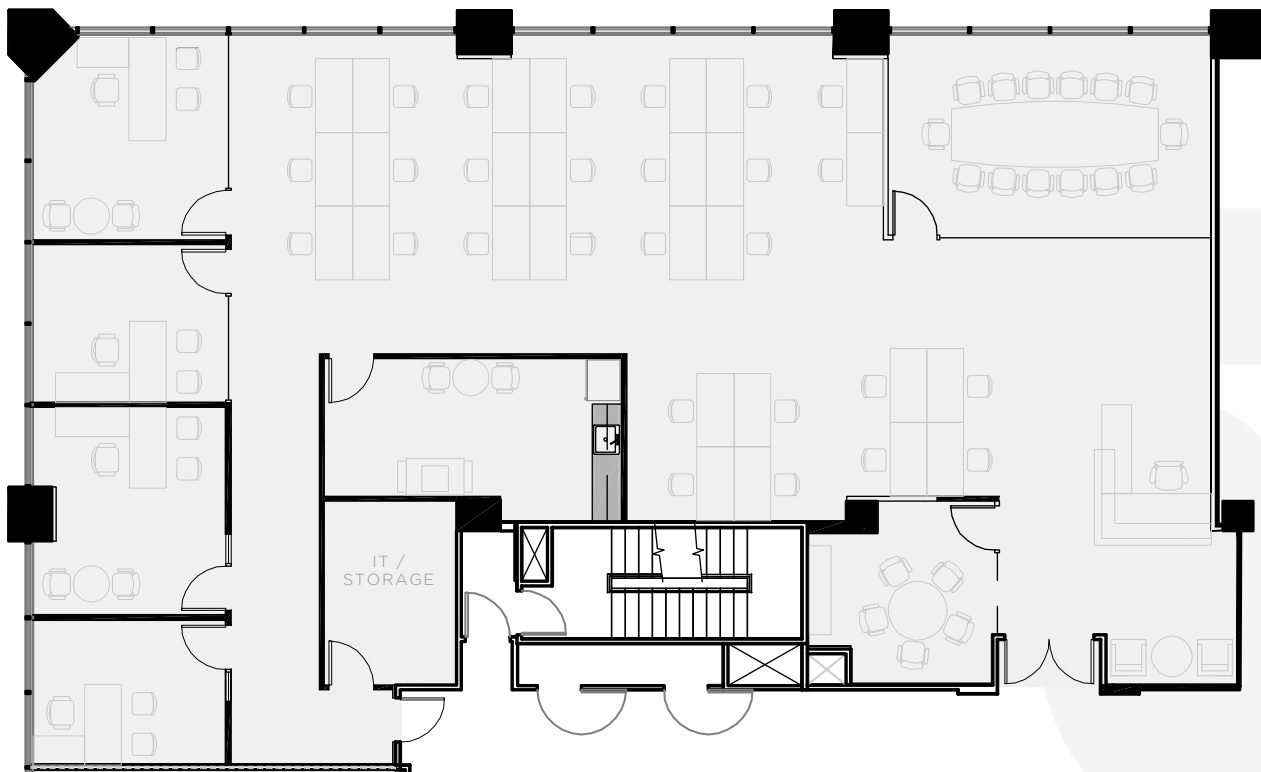
± 4,180 RSF

## SPACE FEATURES

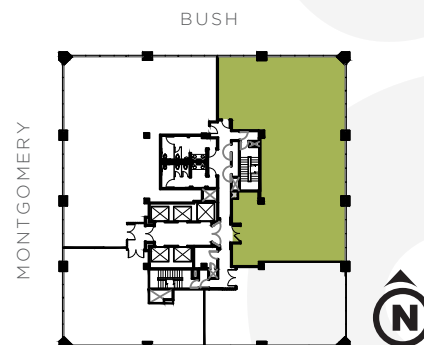
- + Northeast corner suite
- + Double-door elevator identity
- + 4 offices/meeting rooms
- + 2 conference rooms
- + Kitchen/break room
- + Storage/IT room
- + Nice city views
- + Available now



TAKE A  
VIRTUAL TOUR



FURNITURE NOT INCLUDED



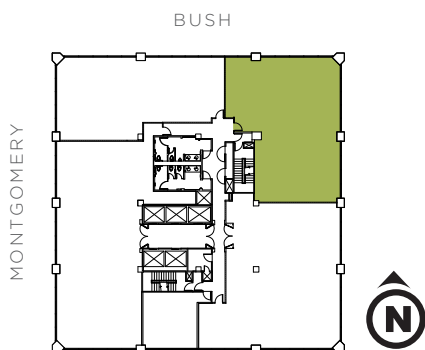
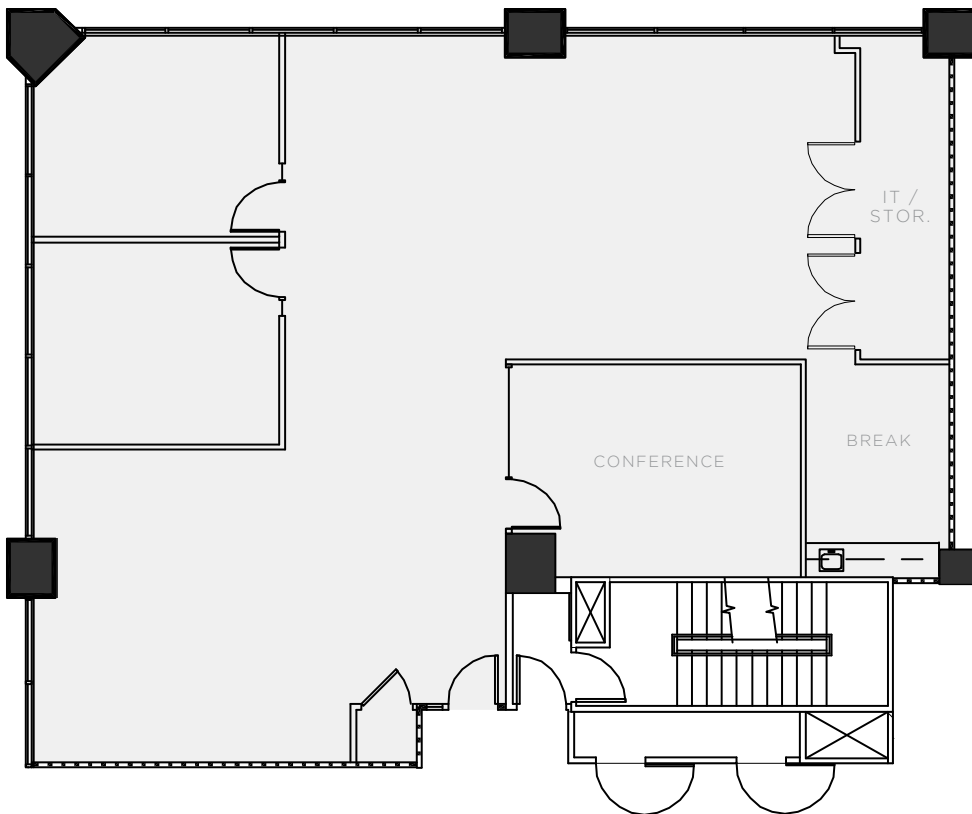
± 2,705 RSF

## SPACE FEATURES

- + Recently improved corner suite
- + 2 offices/meeting rooms
- + Conference room
- + Kitchen
- + Storage/IT room
- + Open area for workstations
- + Nice city views
- + Available now



TAKE A  
VIRTUAL TOUR

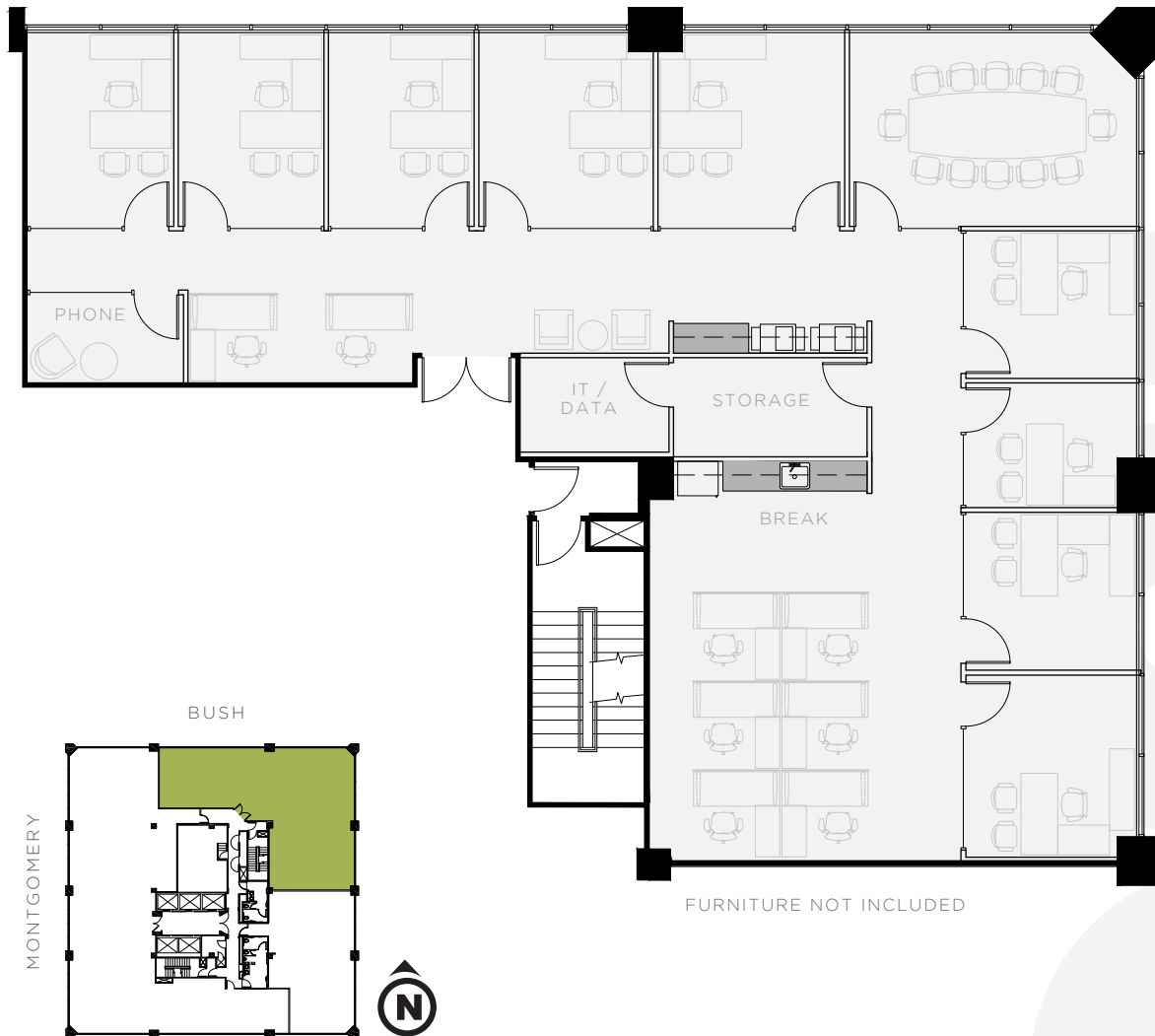


## SPACE FEATURES

- + New spec suite
- + Double-door identity
- + 9 offices/meeting rooms
- + Conference room
- + Open kitchen
- + Phone room
- + IT/storage room
- + Available now



TAKE A  
VIRTUAL TOUR



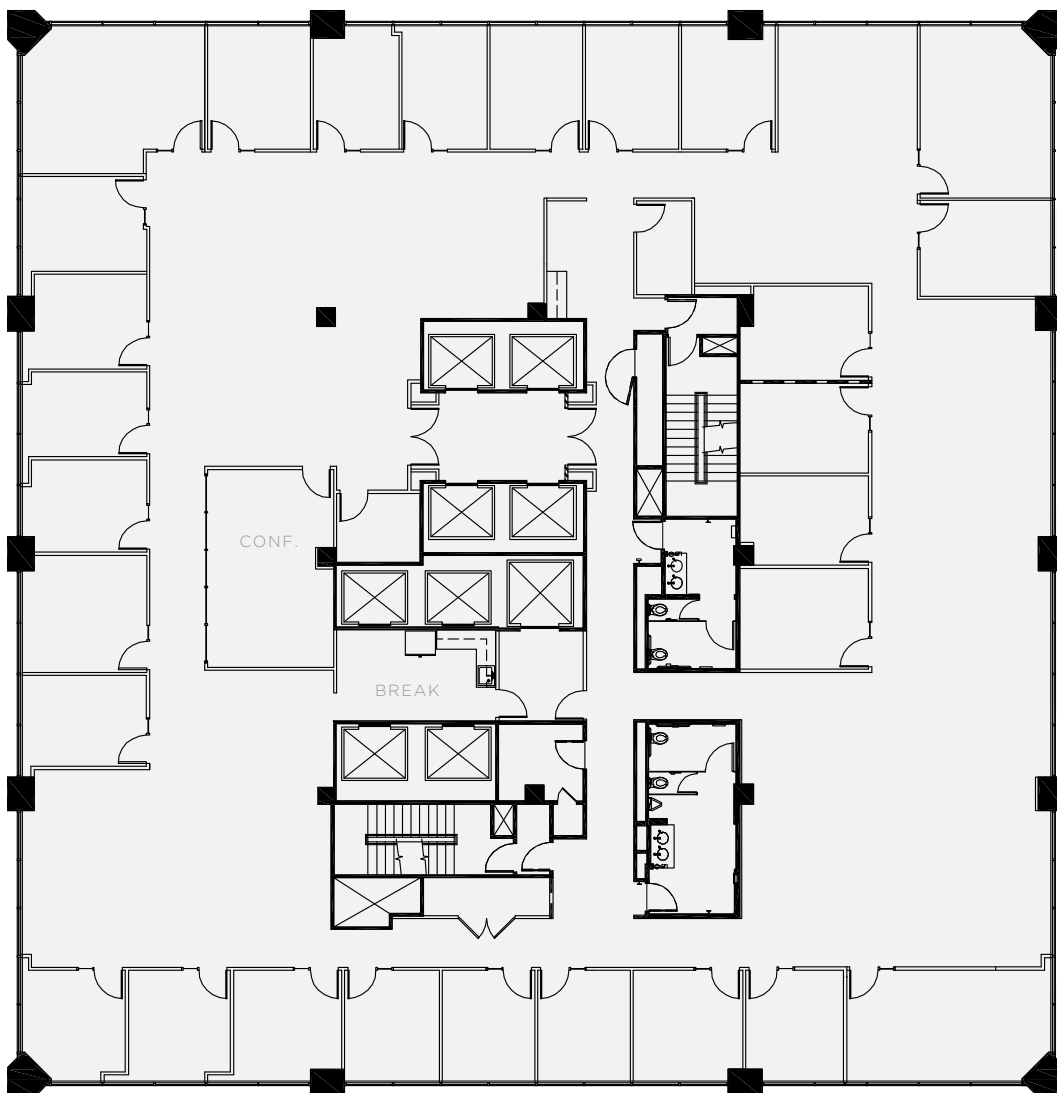


## SPACE FEATURES

- + Full-floor identity
- + 28 offices/meeting rooms
- + Conference room
- + Kitchen/break room
- + Production area
- + Open area for workstations
- + Nice city views
- + Available now

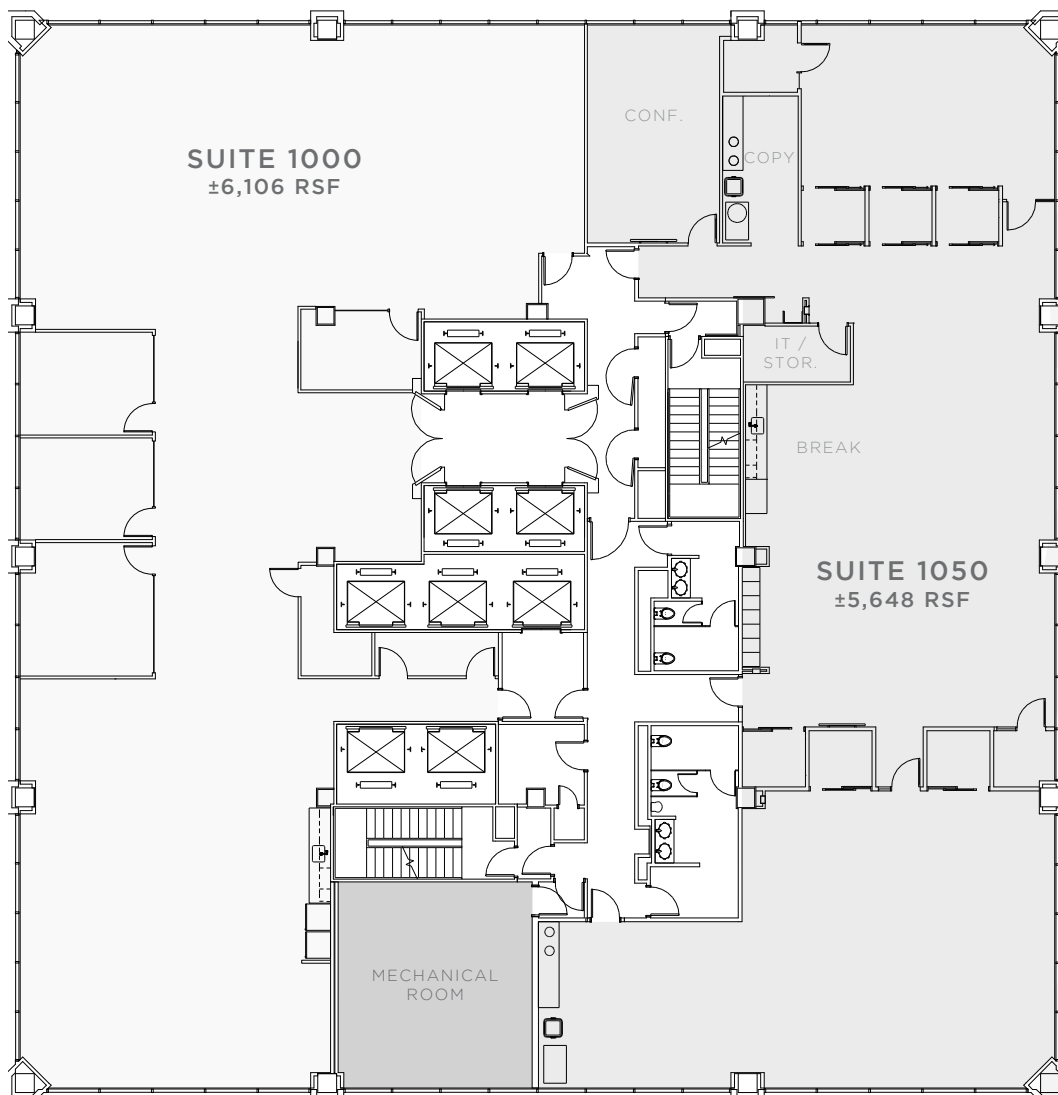


TAKE A  
VIRTUAL TOUR



## SPACE FEATURES

- + Recently improved suite
- + Large conference room
- + 8 phone/focus rooms
- + Open kitchen with exposed ceiling
- + Storage/IT room
- + Open area for workstations
- + Available now



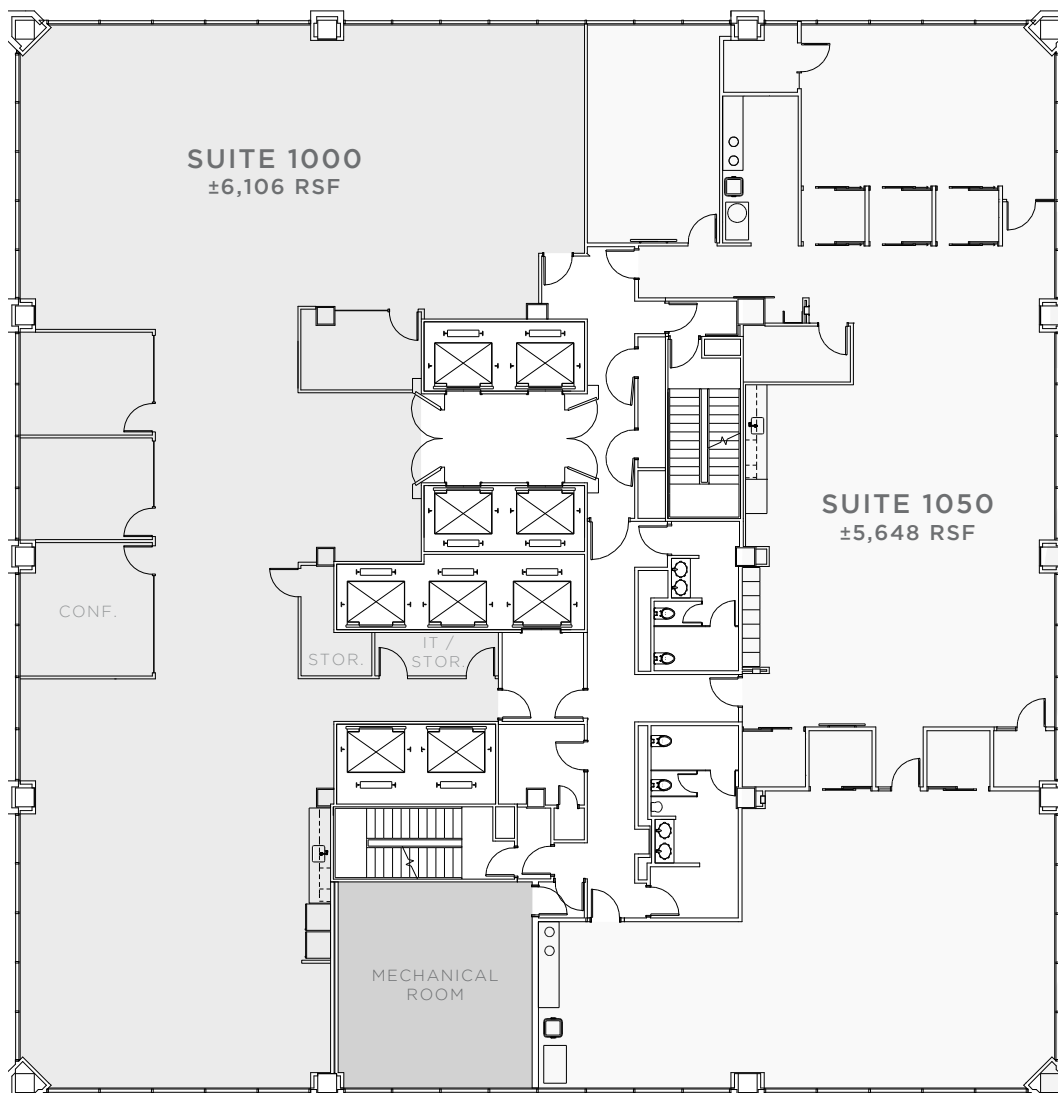
± 6,106 RSF

## SPACE FEATURES

- + Recently improved suite
- + Double-door elevator identity
- + 3 offices/meeting rooms
- + Conference room
- + Open kitchen
- + Storage, IT room, reception
- + Open area for workstations
- + Available now



TAKE A  
VIRTUAL TOUR



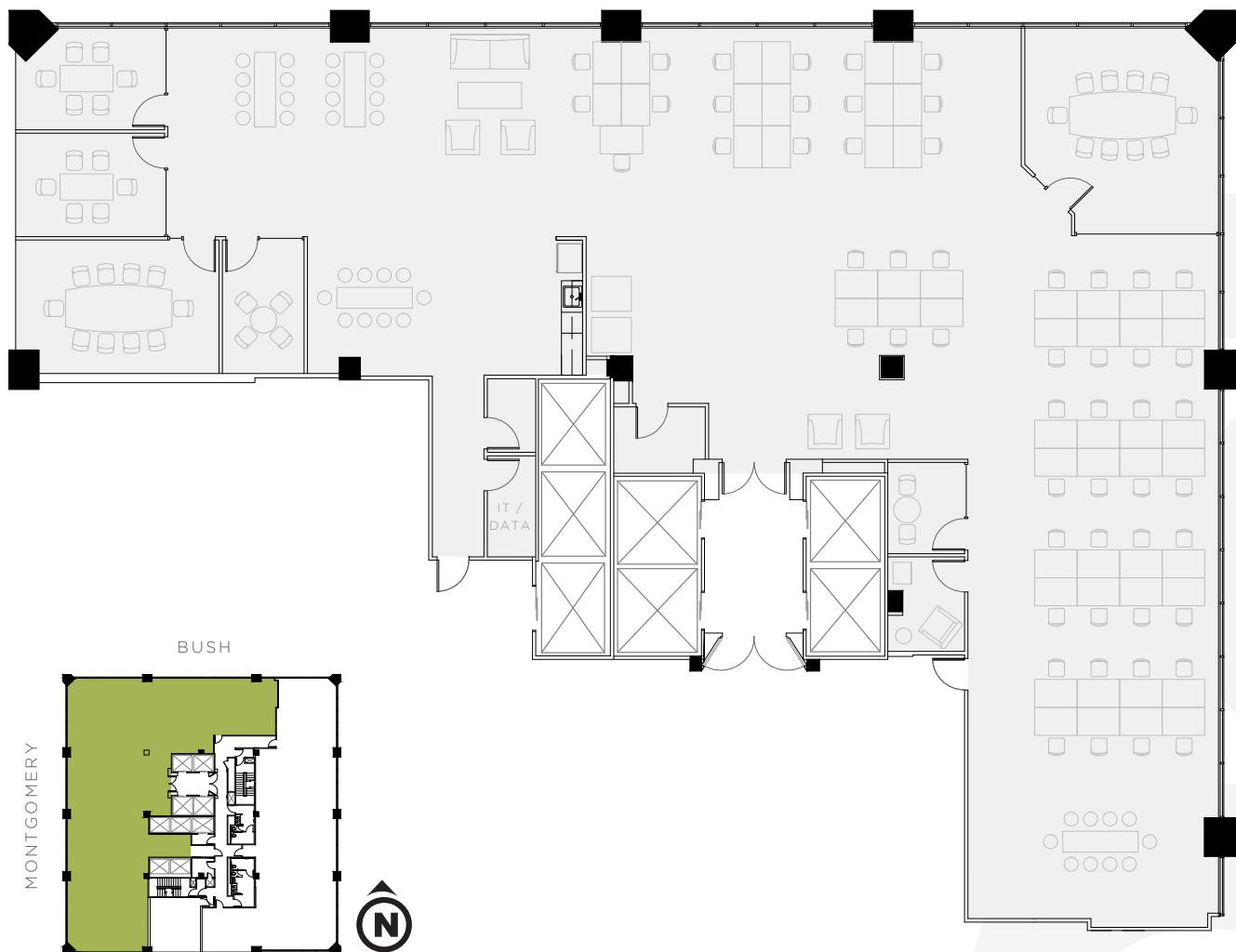
± 6,896 RSF

## SPACE FEATURES

- + Recently improved suite
- + Double-door elevator identity
- + 5 offices/meeting rooms
- + 2 conference rooms
- + Open kitchen, IT/storage room
- + Montgomery and Bush Street outlooks
- + Furnished
- + Available now



TAKE A  
VIRTUAL TOUR



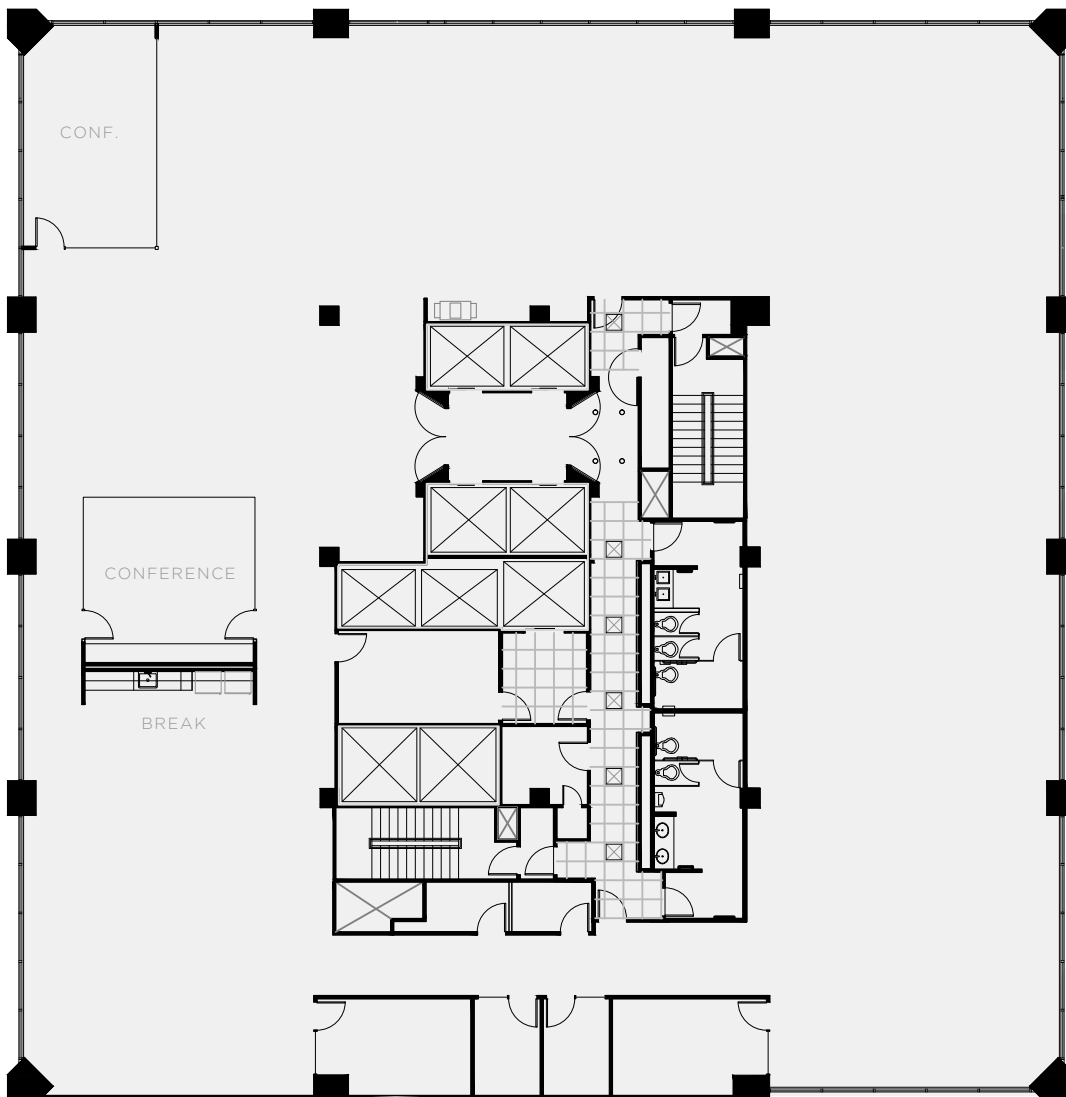


## SPACE FEATURES

- + Full-floor creative suite
- + Partially exposed ceiling, concrete floors
- + Primarily open layout
- + 2 conference rooms
- + 4 meeting rooms
- + Open kitchen/break area
- + IT/storage room, mother's room
- + Available now

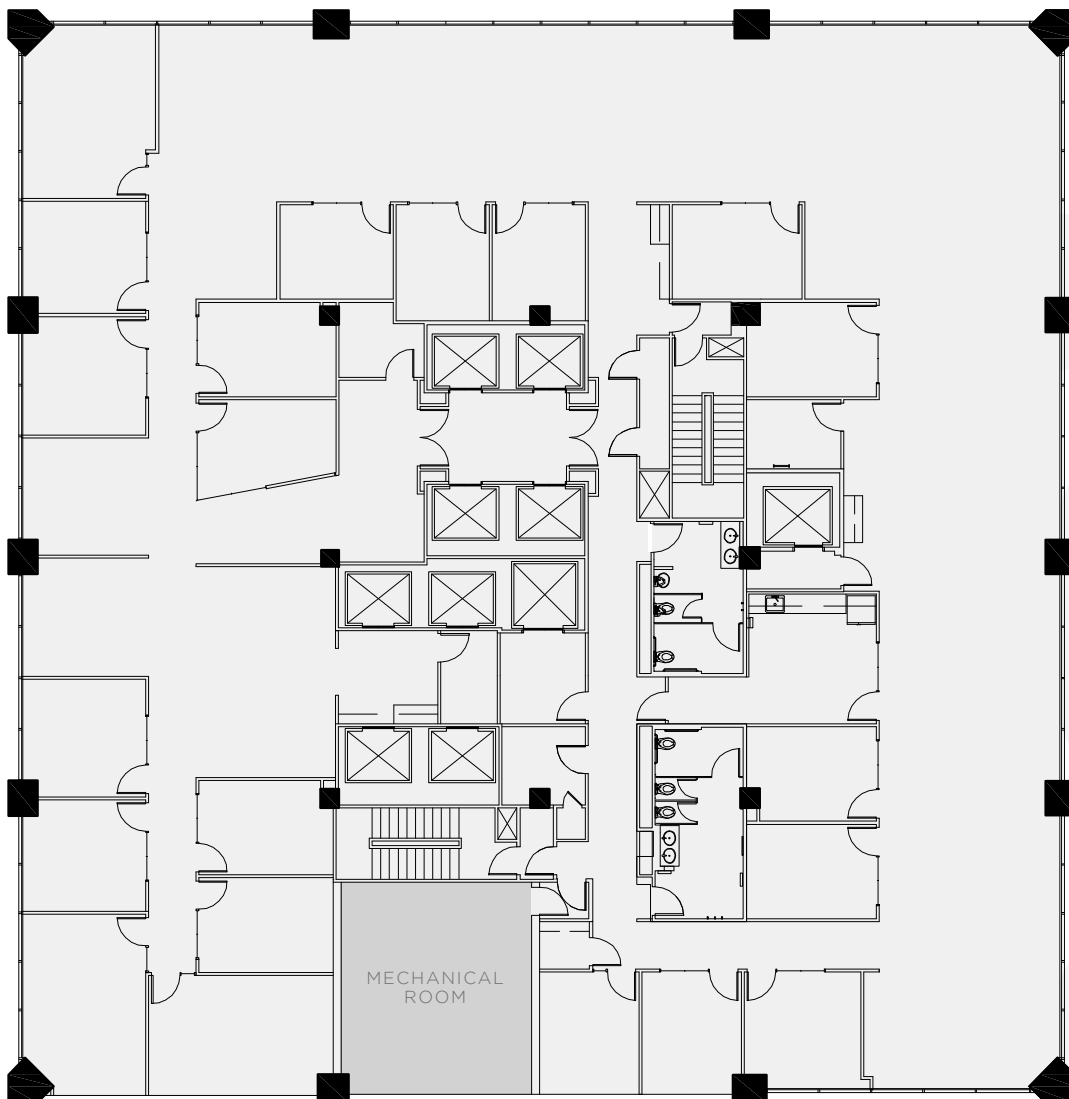


TAKE A  
VIRTUAL TOUR



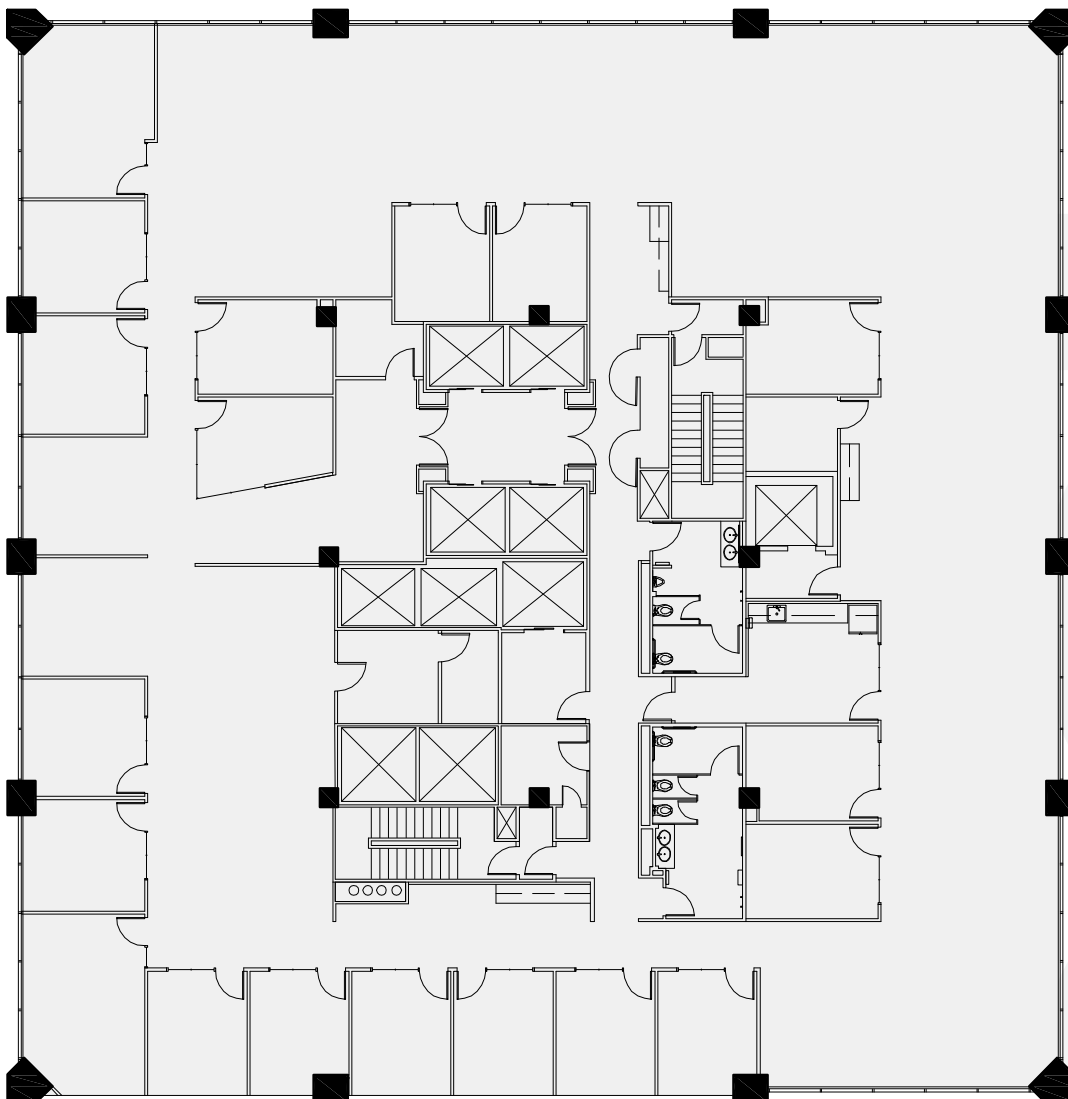
## SPACE FEATURES

- + Full-floor identity
- + 21 offices/meeting rooms (7 exterior)
- + Kitchen/break room
- + Phone room
- + 4 storage rooms
- + Open area with workstations in place
- + Furnished
- + Available now



## SPACE FEATURES

- + Full-floor identity
- + 19 offices/meeting rooms (6 exterior)
- + Kitchen/break room
- + Phone room
- + 4 storage rooms
- + Open area with workstations in place
- + Furnished
- + Available now

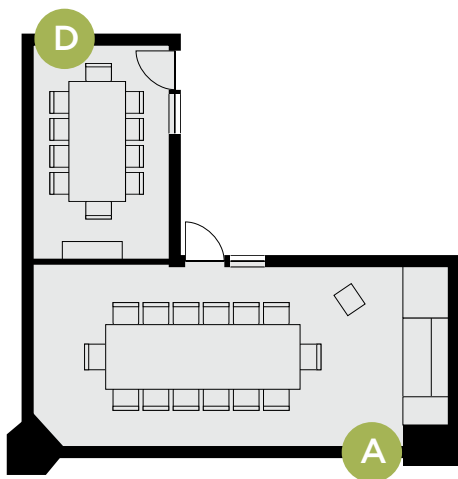


# 180

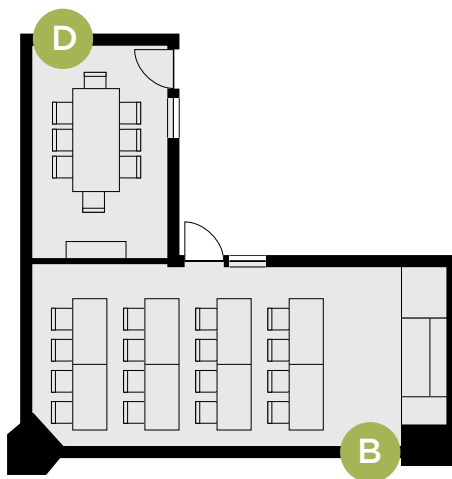
MONTGOMERY

## CONFERENCE CENTER

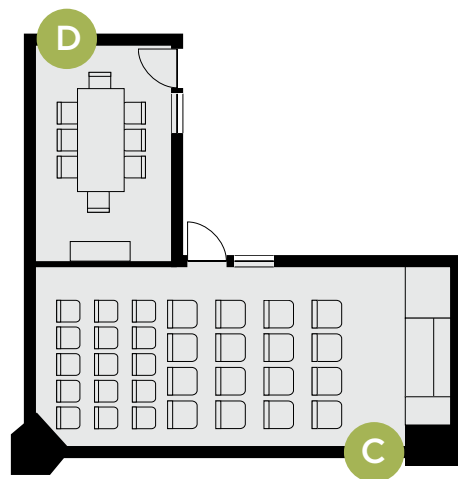
Tenants at 180 Montgomery Street enjoy the benefits of perfectly appointed event and conference space coupled with superior support.



CONFERENCE SEATING



CLASSROOM SEATING



AUDITORIUM SEATING

### THE GRAND ROOM

- A** Conference seating for up to 14
- B** Classroom seating for up to 16
- C** Auditorium seating for up to 31

### THE ROYAL ROOM

- D** Conference seating for up to 8

FULL EVENT SUPPORT AND SETUP

COMPLIMENTARY WI-FI /  
HIGH-SPEED INTERNET



# 180

## MONTGOMERY

### FOR MORE INFORMATION, PLEASE CONTACT:

**KEN CHURICH**

T +1 415 291 1728

C +1 415 203 7360

[ken.churich@cbre.com](mailto:ken.churich@cbre.com)

Lic. 00887925

**SAM STEIN**

T +1 415 772 0209

C +1 415 706 9111

[sam.stein@cbre.com](mailto:sam.stein@cbre.com)

Lic. 02026162

© 2024 CBRE, Inc. All rights reserved. This information has been obtained from sources believed reliable, but has not been verified for accuracy or completeness. You should conduct a careful, independent investigation of the property and verify all information. Any reliance on this information is solely at your own risk. CBRE and the CBRE logo are service marks of CBRE, Inc. All other marks displayed on this document are the property of their respective owners, and the use of such logos does not imply any affiliation with or endorsement of CBRE. Photos herein are the property of their respective owners. Use of these images without the express written consent of the owner is prohibited.

  
**SIDRA**  
180 MONTGOMERY

**CBRE**