

# FOR LEASE RS/56

## INNOVATIVE OFFICE AND LAB SPACE

52-56 ROLAND STREET /  
CHARLESTOWN, MASSACHUSETTS



- BRICK AND BEAM
- HIGH CEILINGS
- ABUNDANT NATURAL LIGHT
- EASY WALK TO THE MBTA ORANGE LINE
- FREE PARKING
- FITNESS CENTER
- OUTDOOR COURTYARD
- COMMON AREA CONFERENCE FACILITIES
- SHORT TERM LEASE AVAILABILITIES

For more information, please contact

RYAN WEBER  
Senior Managing Director  
T 617.772.7279 / M 617.686.3951  
rweber@ngkf.com

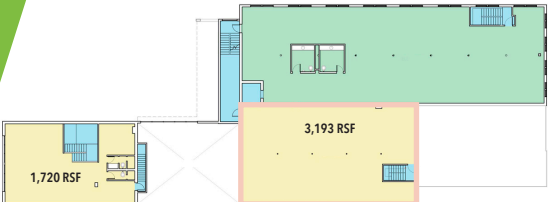
JASON R. CAMERON  
Senior Managing Director  
T 617.772.7206 / M 617.529.2569  
jcameron@ngkf.com

JOE PEARCE  
Director  
T 617.772.7258 / M 732.773.1706  
jpearce@ngkf.com

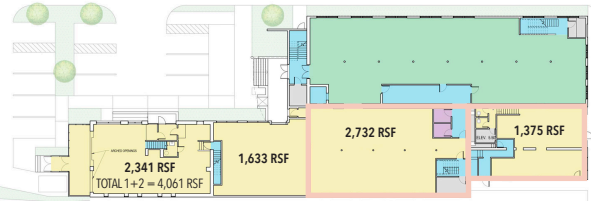
www.rolandstreet.com



### 52 ROLAND FLOOR PLANS



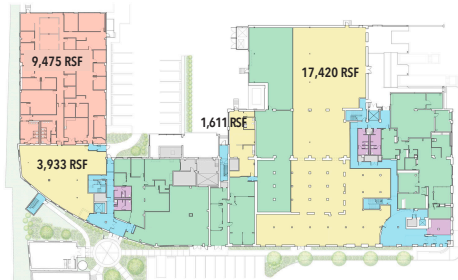
FIRST FLOOR / 4,913 SQ. FT. AVAILABLE



SECOND FLOOR / 8,081 SQ. FT. AVAILABLE

#### RENTABLE AREA LEGEND

- |                                 |                        |
|---------------------------------|------------------------|
| AMENITY SPACE                   | OCCUPIED CLIENT SPACE  |
| BOH                             | VACANT CLIENT SPACE    |
| CIRCULATION                     | SHORT TERM LEASE SPACE |
| POSSIBLE SHORT TERM LEASE SPACE |                        |



FIRST FLOOR / 32,439 SQ. FT. AVAILABLE



SECOND FLOOR / 15,521 SQ. FT. AVAILABLE



THIRD FLOOR / 14,631 SQ. FT. AVAILABLE

### 56 ROLAND FLOOR PLANS