



1750
PENNSYLVANIA

CBRE

SUITE 600

15,165 SF Divisible

AVAILABLE NOW!

23K SF Full Floor Available April 2022



VIRTUAL TOUR

- Direct Elevator Exposure
- Polished Concrete
- Modern, Bright Finishes

Building Notes:

- Prominent Pennsylvania Ave Address Proximate to The White House
- Large, Double Height Lobby
- Upgraded Fitness Center



SUITE IS DIVISIBLE

SUITE A= 10,542 SF

SUITE B= 4,623 SF

SUITES A + B= 15,165 SF

SUITE 610

7,891 SF

AVAILABLE APRIL 2022

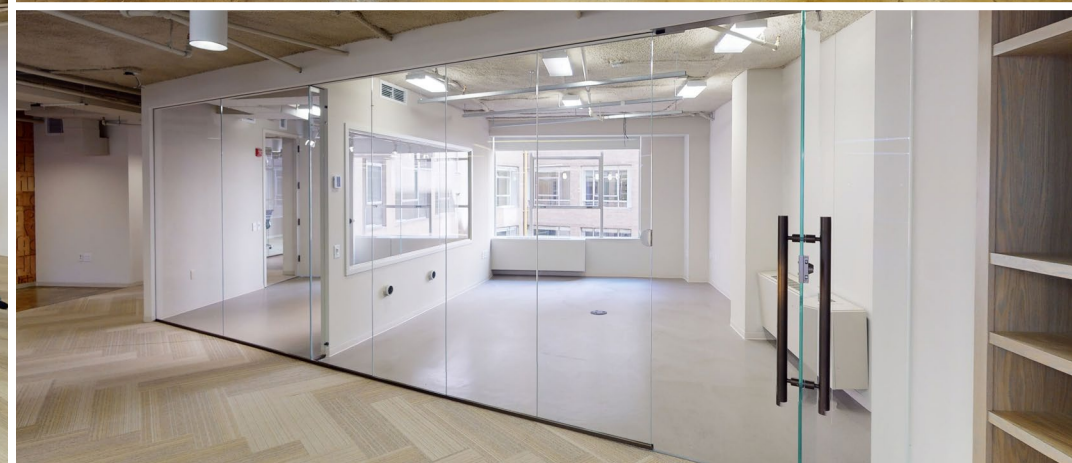
23K SF Full Floor Available April 2022

- Direct Elevator Exposure
- Bright, Modern Finishes
- Pennsylvania Ave Windowline

Building Notes:

- Prominent Pennsylvania Ave Address Proximate to The White House
- Large, Double Height Lobby
- Upgraded Fitness Center







FOR MORE INFORMATION CONTACT:

Mark Klug

+1 202 585 5551

mark.klug@cbre.com

Carroll Cavanagh

+1 202 585 5586

carroll.cavanagh@cbre.com

Emily Eppolito

+1 202 585 5695

emily.eppolito@cbre.com

Dimitri Hajimihalis

+1 202 585 5611

dimitri.hajimihalis@cbre.com

© 2020 CBRE, Inc. All rights reserved. This information has been obtained from sources believed reliable, but has not been verified for accuracy or completeness. You should conduct a careful, independent investigation of the property and verify all information. Any reliance on this information is solely at your own risk. CBRE and the CBRE logo are service marks of CBRE, Inc. All other marks displayed on this document are the property of their respective owners, and the use of such logos does not imply any affiliation with or endorsement of CBRE. Photos herein are the property of their respective owners. Use of these images without the express written consent of the owner is prohibited.

CBRE