

A modern building interior featuring a large, white, cylindrical pillar and a staircase with a metal railing. The wall is made of large, light-colored tiles. A large logo is displayed on the wall. In the background, there is a glass-walled office area with a person working at a desk. The floor is made of large, light-colored tiles. The overall design is clean and minimalist.

William

NEWMARK

AVAILABILITIES

<i>Entire</i> 21st Floor:	22,390 RSF	Top floor of the Building with outstanding light and views on four sides. Landlord to provide a brand new installation.
<i>Partial</i> 18th Floor:	10,221 RSF	Currently built out with direct elevator presence. Landlord to modify with new building standard and finishes.
<i>Entire</i> 11th Floor:	21,617 RSF	Landlord to provide a new building installation. Contiguous block of up to 80,000 SF.
<i>Entire</i> 10th Floor:	21,594 RSF	Landlord to provide a new building installation. Contiguous block of up to 80,000 SF.
<i>Entire</i> 9th Floor:	21,973 RSF	Landlord to provide a new building installation. Contiguous block of up to 80,000 SF.
<i>Partial</i> 8th Floor:	4,991 RSF	Brand new prebuild featuring modern glass fronted offices and conference rooms, open kitchen with polished concrete floors and an open ceiling. The floor also features the building's new amenity center featuring a state of the art conferencing center with a communal lounge and gaming area.
<i>Partial</i> 8th Floor:	6,703 RSF	Brand new prebuild featuring modern glass fronted offices and conference rooms, open kitchen with polished concrete floors and an open ceiling. The floor also features the building's new amenity center featuring a state of the art conferencing center with a communal lounge and gaming area.
<i>Partial</i> 7th Floor:	8,158 RSF	Currently built out with four conference rooms, open style kitchen and open space. Landlord to modify with new building standard finishes.
<i>Partial</i> 3th Floor:	3,907 RSF	Currently built out with perimeter offices and open bullpen. Good natural light on two sides. Landlord to modify per a mutually agreed upon plan.
<i>Partial</i> 2nd Floor:	8,657 RSF	Landlord to provide a new building installation. Large oversized windows on two sides with great streetscape views.

 = Contiguous Block

100 William

100 William Street is an ideal location in the Financial District, just two blocks from the Fulton Street transit hub with access to multiple subway lines.

The building recently completed construction on its brand new state-of-the-art conferencing center, featuring a library and lounge. The center is accessible to all tenants, and is located on the 8th floor.

Orange Theory and Starbucks make up 100 William's retail, located in the building's outdoor breezeway.

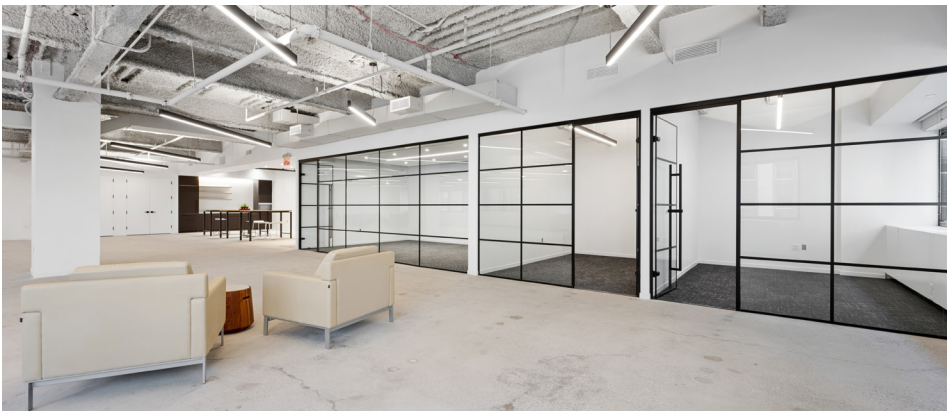
8th Floor Suite

Common Areas / Kitchen



8th Floor Suite

Conference / Meeting Rooms



Amenity Center

Tenant Lounge



Amenity Center

Conference Room



Floor Plan

8th Floor - Executive Tenant Test Fit



SUITE A SUMMARY:

1	10 PERSON CONFERENCE
7	PRIVATE OFFICES
31	WORKSTATIONS (6'-0"x6'-0")
PANTRY COPY / PRINT IT ROOM	
TOTAL OCCUPANTS: 38	

SUITE B SUMMARY:

1	16 PERSON CONFERENCE
1	10 PERSON CONFERENCE
1	4 PERSON HUDDLE
1	2 PERSON PHONE ROOM
5	PRIVATE OFFICES
18	WORKSTATIONS (6'-0"x6'-0")
PANTRY COPY / PRINT IT ROOM	
TOTAL OCCUPANTS: 23	

PLATT STREET

Floor Plan

8th Floor - Tech Tenant Test Fit



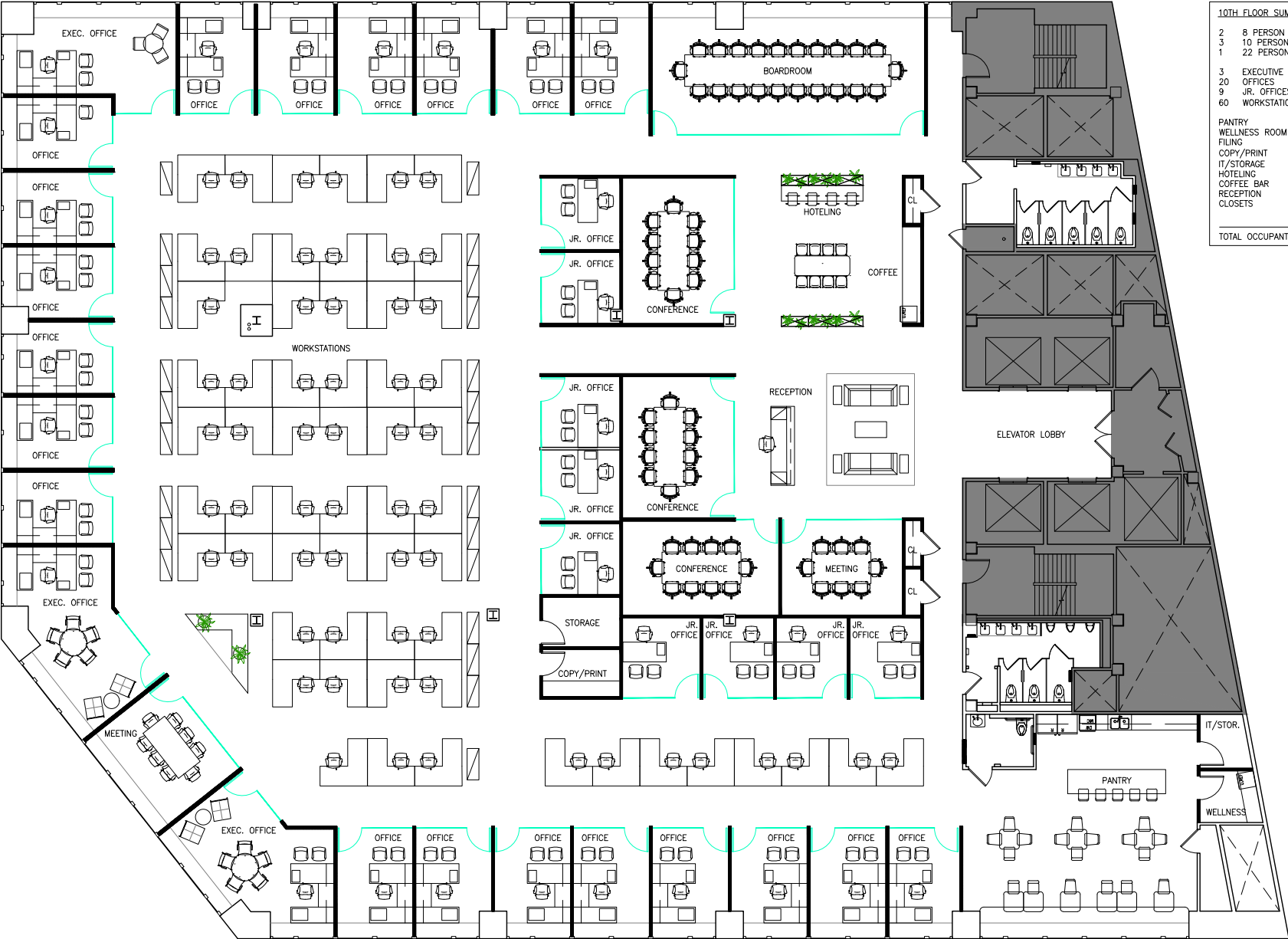
SUITE A SUMMARY:	
1	10 PERSON CONFERENCE
2	PRIVATE OFFICES
49	WORKSTATIONS (6'-0"x6'-0")
PANTRY COPY / PRINT IT ROOM	
TOTAL OCCUPANTS: 51	

SUITE B SUMMARY:	
2	10 PERSON CONFERENCE
1	2 PERSON PHONE ROOM
1	PRIVATE OFFICES
35	WORKSTATIONS (6'-0"x6'-0")
PANTRY COPY / PRINT IT ROOM	
TOTAL OCCUPANTS: 36	

PLATT STREET

Floor Plan

10th Floor - Executive Tenant Test Fit - Option 1



10TH FLOOR SUMMARY:	
2	8 PERSON MEETING
3	10 PERSON CONFERENCE
1	22 PERSON BOARDROOM
3	EXECUTIVE OFFICES
20	OFFICES
9	JR. OFFICES
60	WORKSTATIONS (6'-0"x6'-0")
PANTRY	
WELLNESS ROOM	
FILING	
COPY/PRINT	
IT/STORAGE	
HOTELING	
COFFEE BAR	
RECEPTION	
CLOSETS	
TOTAL OCCUPANTS: 92	

PLATT STREET

Floor Plan

10th Floor - Executive Tenant Test Fit - Option 2



10TH FLOOR SUMMARY:

2	8 PERSON MEETING
3	10 PERSON CONFERENCE
1	22 PERSON BOARDROOM
3	EXECUTIVE OFFICES
20	OFFICES
10	JR. OFFICES
60	WORKSTATIONS (6'-0"x6'-0")
PANTRY	
WELLNESS ROOM	
FILING	
COPY/PRINT	
IT/STORAGE	
HOTELING	
COFFEE BAR	
RECEPTION	
CLOSETS	

TOTAL OCCUPANTS: 93

PLATT STREET





100
William

David Falk
212-372-2271
david.falk@nmrk.com

Eric Cagner
212-372-2279
eric.cagner@nmrk.com

Daniel Appel
212-359-1901
daniel.appel@nmrk.com

Leo Kone
212-655-0670
leo.kone@nmrk.com

NEWMARK

The information contained herein has been obtained from sources deemed reliable but has not been verified and no guarantee, warranty or representation, either express or implied, is made with respect to such information. Terms of sale or lease and availability are subject to change or withdrawal without notice.

©2022 Newmark. All Rights Reserved.