



create  
your space

**Seaview Corporate Center**  
**10180 - 10190 Telesis Court, San Diego, CA**

Seaview Corporate Center is a four-building Class A campus that embodies a Live-Work-Play environment. This property is conveniently located in Northwestern Sorrento Mesa allowing for excellent access to I-805 and I-5 and offers an impressive array of tenant exclusive amenities including a state-of-the-art fitness center, tennis/basketball court and heated lap pool.

Listing Broker:



**create  
your space**

## **Seaview Corporate Center** 10180 - 10190 Telesis Court, San Diego, CA



## **Building Overview**



- Panoramic views of the Pacific Ocean and Los Peñasquitos Canyon
- Monument and building signage available
- Comprehensive range of tenant exclusive on-site amenities
- On-site multi-level parking structure with additional surface parking
- On-site sit-down gourmet café
- Proudly owned and managed on-site by John Hancock Real Estate

**Questions on Seaview Corporate Center? Contact our Cushman & Wakefield listing team:**  
Brett Ward • Bill Cavanagh • Michael Cassolato T: 858.546.5400

**Get in touch with our John Hancock Real Estate leasing team for our San Diego portfolio:**  
Kevin Gonzales Leasing Manager T: 858.292.1667 E: [Kevin\\_Gonzales@jhancock.com](mailto:Kevin_Gonzales@jhancock.com)







## Seaview Corporate Center

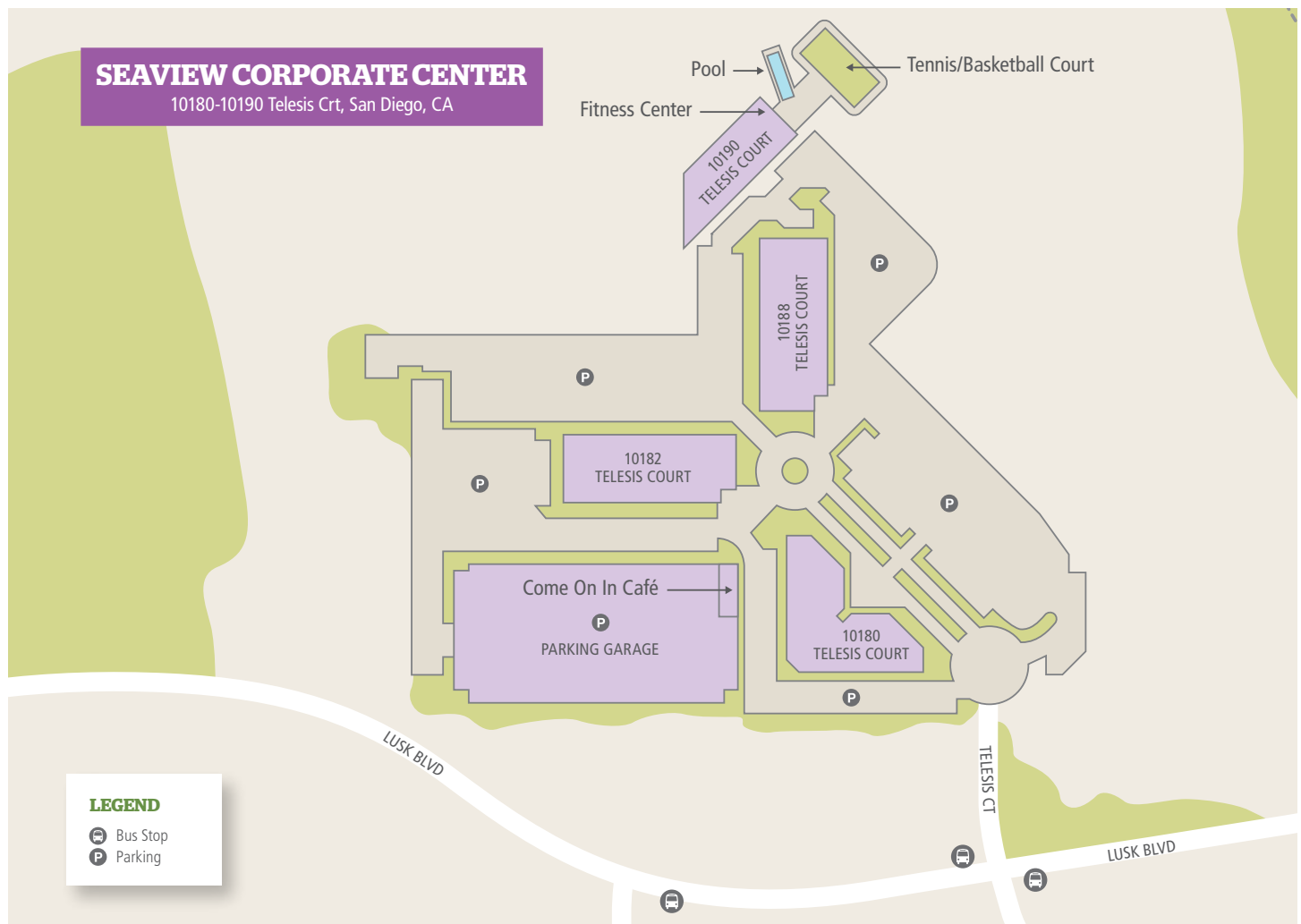
10180 - 10190 Telesis Court, San Diego, CA



## On-site Amenities

Seaview Corporate Center features an impressive amenity base providing tenants with a superior campus environment.

- Fitness center with state-of-the-art equipment, showers and lockers
- Heated lap pool
- Tennis and basketball court
- Nearby walking trails
- Come on in! gourmet café
- On-site parking garage



Questions on Seaview Corporate Center? Contact our Cushman & Wakefield listing team:

Brett Ward • Bill Cavanagh • Michael Cassolato T: 858.546.5400

Get in touch with our John Hancock Real Estate leasing team for our San Diego portfolio:

Kevin Gonzales Leasing Manager T: 858.292.1667 E: Kevin\_Gonzales@jhancock.com





## Seaview Corporate Center

10180 - 10190 Telesis Court, San Diego, CA



## A Superior Location

Seaview Corporate Center is located in Sorrento Mesa with convenient freeway access to I-5, I-805 and CA-56.

- Close proximity to the Carroll Canyon extension
- Access to the San Diego Coaster, numerous hiking trails, spectacular ocean and valley views
- Minutes from major hotels, restaurants and financial service amenities



Questions on Seaview Corporate Center? Contact our Cushman & Wakefield listing team:

Brett Ward • Bill Cavanagh • Michael Cassolato T: 858.546.5400

Get in touch with our John Hancock Real Estate leasing team for our San Diego portfolio:

Kevin Gonzales Leasing Manager T: 858.292.1667 E: Kevin\_Gonzales@jhancock.com



Real Estate



## Seaview Corporate Center

10180 – 10190 Telesis Court, San Diego, CA



## Availability

### 10188 Telesis Court

Suite	SF	Details
140	4,884	Reception area, large conference room, two private offices, open office

### 10182 Telesis Court

Suite	SF
600	18,806
500	21,484
400	21,568
300	21,568
200	21,366
100	19,087



**Questions? Contact our Cushman & Wakefield listing team:**  
Brett Ward • Bill Cavanaugh • Michael Cassolato T: 858.546.5400

**Get in touch with our John Hancock Real Estate listing team for our San Diego portfolio:**  
**Kevin Gonzales** Leasing Manager T: 858.292.1667 E: Kevin\_Gonzales@jhancock.com





create  
your space

## Seaview Corporate Center

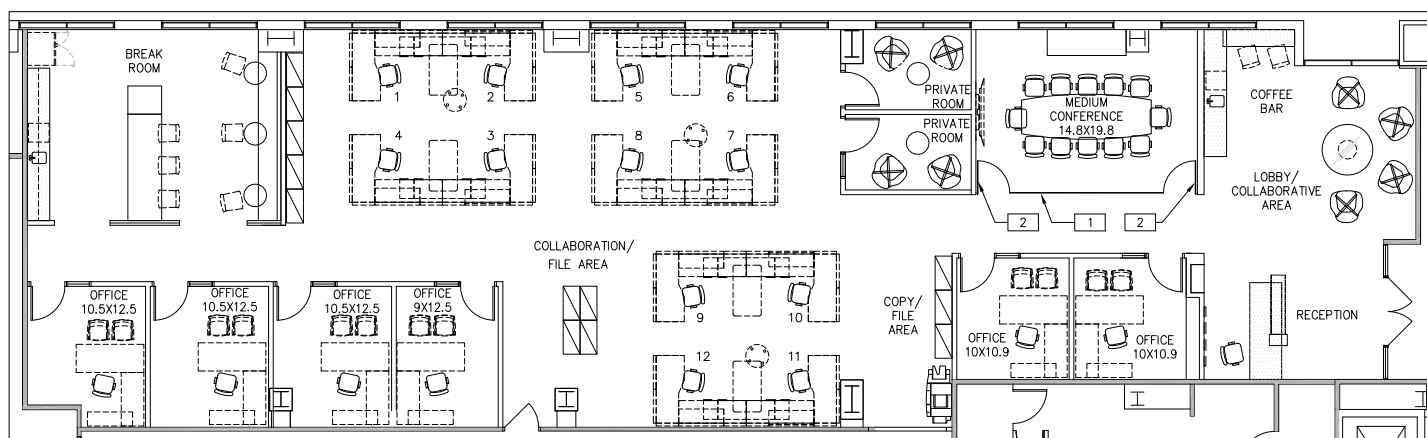
10180 - 10190 Telesis Court, San Diego, CA



## 10188 Telesis Court

**Suite 140 • 4,884 SF**

Conceptual space plan



Questions on Seaview Corporate Center? Contact our Cushman & Wakefield listing team:

Brett Ward • Bill Cavanagh • Michael Cassolato T: 858.546.5400

Get in touch with our John Hancock Real Estate leasing team for our San Diego portfolio:

Kevin Gonzales Leasing Manager T: 858.292.1667 E: Kevin\_Gonzales@jhancock.com



Real Estate



## Seaview Corporate Center

10180 - 10190 Telesis Court, San Diego, CA



## Building Specifications

### 10180 Telesis Court

Project Size	93,220 SF
Year Built	1984
Year Renovated	1998
Stories	5
Core Factor	6.2% – 13.4%
IT Capabilities	T1 & Fiber Optics
Construction	Steel frame with curtain wall system
Elevators	3 – 2,500 pound passenger elevators
Power	2,000 Amps, 277/480-volt, 3 phase & 400 amp metered house panell
Zoning	IP-2-1

### 10188 Telesis Court

Project Size	123,944 SF
Year Built	2001
Stories	6
Core Factor	6.2% – 13.4%
IT Capabilities	twTelecom, T1 & Fiber Optics
Construction	Steel frame with EIFS and curtain wall system
Elevators	2 – 2,500 pound passenger elevators & 1 – 3,500 pound freight elevator
Power	3,000 Amps, 277/480-volt, 3 phase with 6 – 400 amps sub-panels
Zoning	IP-2-1

### 10182 Telesis Court

Project Size	123,880 SF
Year Built	1999
Stories	6
Core Factor	6.2% – 13.4%
IT Capabilities	twTelecom, T1 & Fiber Optics
Construction	Steel frame with EIFS and curtain wall system
Elevators	2 – 2,500 pound passenger elevators & 1 – 3,500 pound freight elevator
Power	3,000 Amps, 277/480-volt, 3 phase with 6 – 400 amps sub-panels
Zoning	IP-2-1

### 10190 Telesis Court

Project Size	12,783 SF
Year Built	1984
Year Renovated	1998
Stories	2
IT Capabilities	T1 Lines
Construction	Steel frame with curtain wall system
Power	2,000 Amps, 277/480-volt, 3 phase
Zoning	IP-2-1

Questions on Seaview Corporate Center? Contact our Cushman & Wakefield listing team:

Brett Ward • Bill Cavanagh • Michael Cassolato T: 858.546.5400

Get in touch with our John Hancock Real Estate leasing team for our San Diego portfolio:

Kevin Gonzales Leasing Manager T: 858.292.1667 E: Kevin\_Gonzales@jhancock.com





## Seaview Corporate Center

10180 - 10190 Telesis Court, San Diego, CA



## Gallery



Heated lap pool



Tennis/basketball court



Fitness center



On-site parking garage and gourmet café



View from Seaview Corporate Center

Questions on Seaview Corporate Center? Contact our Cushman & Wakefield listing team:  
Brett Ward • Bill Cavanagh • Michael Cassolato T: 858.546.5400

Get in touch with our John Hancock Real Estate leasing team for our San Diego portfolio:  
Kevin Gonzales Leasing Manager T: 858.292.1667 E: [Kevin\\_Gonzales@jhancock.com](mailto:Kevin_Gonzales@jhancock.com)

