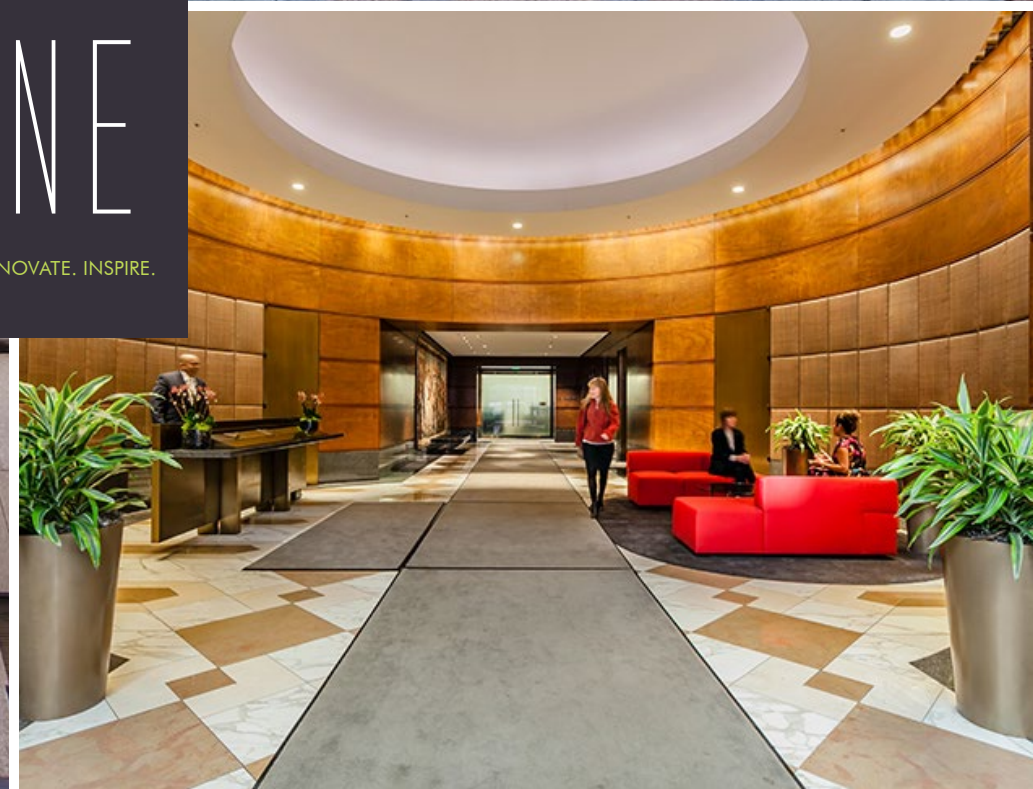


# 235 PINE

CONNECT. INNOVATE. INSPIRE.



235  
PINE



## PROPERTY FEATURES

- LEED Gold certified building
- Architecturally distinctive Skidmore, Owings & Merrill design
- 8,500 sq. ft. floor plates offering full-floor identity to small- and medium-size users
- Column-free, side-core design
- Excellent access to public transit
- Local ownership
- First-rate amenities on site, including a well-appointed conference center, 4-level parking garage, bike racks, showers and day lockers

SUITE	RSF (Approx.)	DATE AVAILABLE	COMMENTS
100	2,580	Now	Recently improved <b>plug &amp; play</b> suite with double-door identity off the main lobby, 2 conference rooms, phone room, 16 workstations, 2 collaboration/lounge areas and open kitchen. <a href="#">View Virtual Tour</a>
600	8,860	Now	Full-floor identity, 16 offices/meeting rooms, large conference room, boardroom, kitchen, copy room and IT room. <a href="#">View Virtual Tour</a>
750	2,816	Now	<b>Plug &amp; play</b> suite with 2 conference rooms, open kitchen, storage/IT room and open area with 10 workstations <a href="#">View Virtual Tour</a>
1050	2,619	Now	2 offices/meeting rooms, kitchenette/copy room, IT closet and open area. <a href="#">View Virtual Tour</a>
1250	1,863	Now	Recently improved corner suite with 3 offices/meeting rooms, conference room, kitchenette and open area. <a href="#">View Virtual Tour</a>
1300	8,553	Now	Full-floor creative suite with partially exposed ceiling and polished concrete floors, 4 offices, 3 conference rooms, 3 phone rooms, kitchen and open area. Furniture potentially available. <a href="#">View Virtual Tour</a>
1475	2,390	Now	Recently improved suite with 1 office/meeting room, conference room, kitchenette and open area. <a href="#">View Virtual Tour</a>
2300	8,257	Now	Full-floor identity. Recently improved <b>plug &amp; play</b> suite with 18 offices/meeting rooms, large conference room, 2 phone rooms, open kitchen, IT room and storage rooms.



[www.235pine.com](http://www.235pine.com)



**CBRE**

Sam Stein | T +1 415 772 0209 | C +1 415 706 9111 | [sam.stein@cbre.com](mailto:sam.stein@cbre.com) | Lic. 02026162

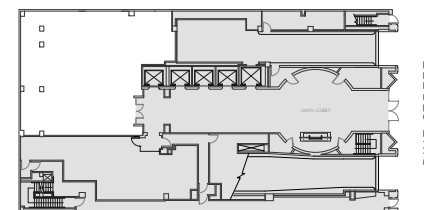
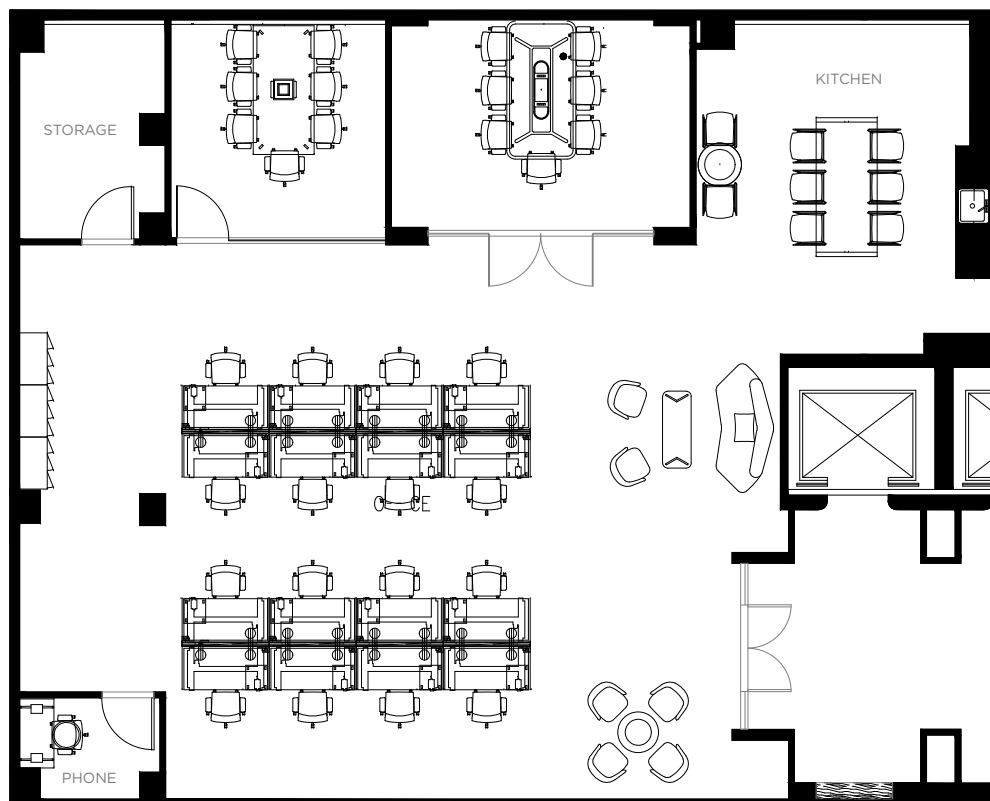
CBRE | 415 Mission Street, 46th Floor, San Francisco CA 94105 | [www.cbre.com/sfdt](http://www.cbre.com/sfdt)

235  
PINE

**SUITE 100**  
**±2,580 RSF**

**FEATURES:**

- Recently improved **plug & play** suite with double-door identity off the main lobby
- 2 conference rooms, phone room, 16 workstations, 2 collaboration/lounge areas, open kitchen, storage
- Available now



**VIEW VIRTUAL TOUR**

Sam Stein | T +1 415 772 0209 | C +1 415 706 9111 | sam.stein@cbre.com | Lic. 02026162

CBRE | 415 Mission Street, 46th Floor, San Francisco CA 94105 | [www.cbre.com/sfdt](http://www.cbre.com/sfdt)



[www.235pine.com](http://www.235pine.com)

**CBRE**

235  
PINE

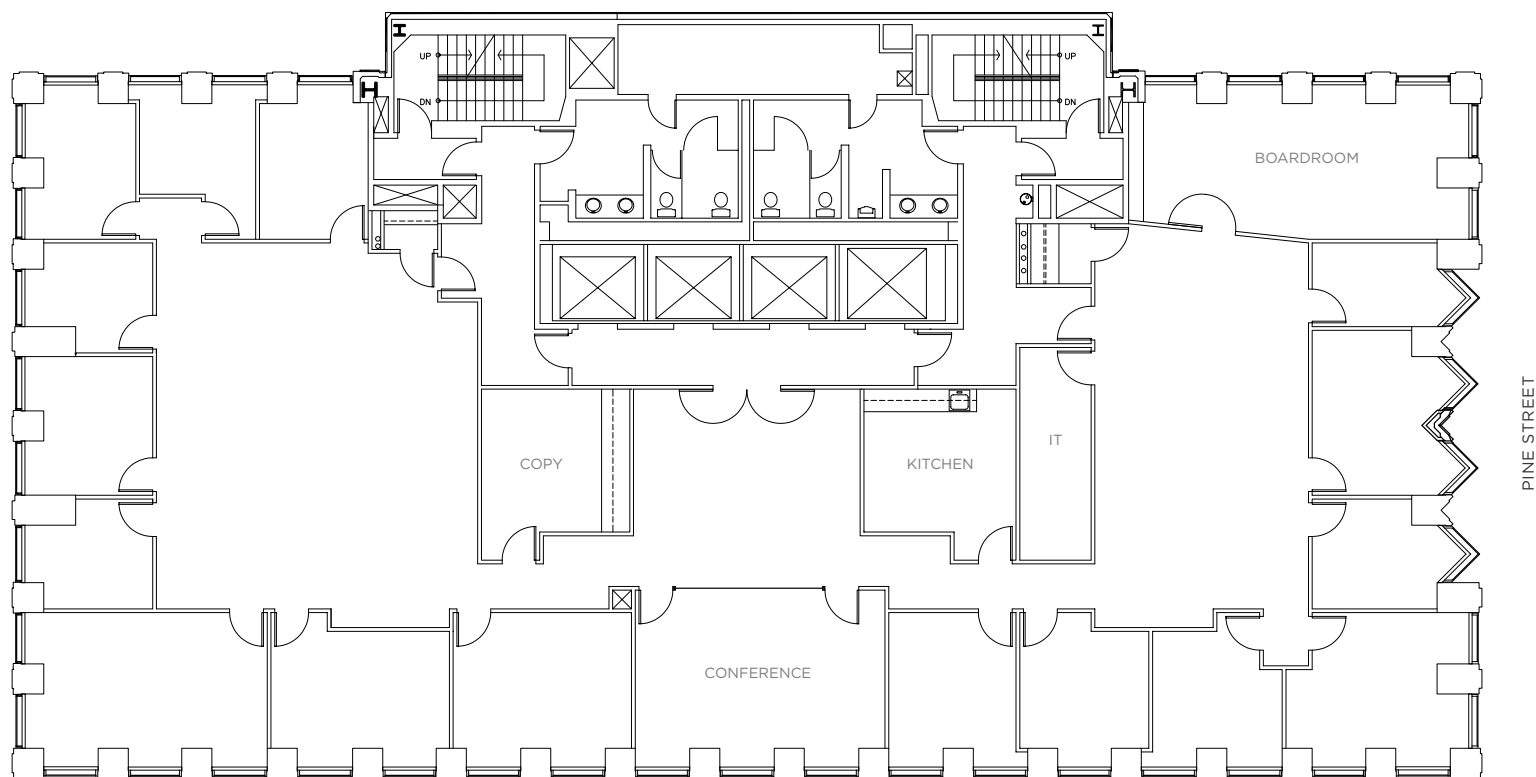


VIEW VIRTUAL TOUR

### FEATURES:

- Full-floor identity
- 16 perimeter offices/meeting rooms, large conference room, boardroom, kitchen, storage/copy room, IT room
- Available now

**SUITE 600**  
**±8,860 RSF**



Sam Stein | T +1 415 772 0209 | C +1 415 706 9111 | sam.stein@cbre.com | Lic. 02026162

CBRE | 415 Mission Street, 46th Floor, San Francisco CA 94105 | www.cbre.com/sfcd



[www.235pine.com](http://www.235pine.com)

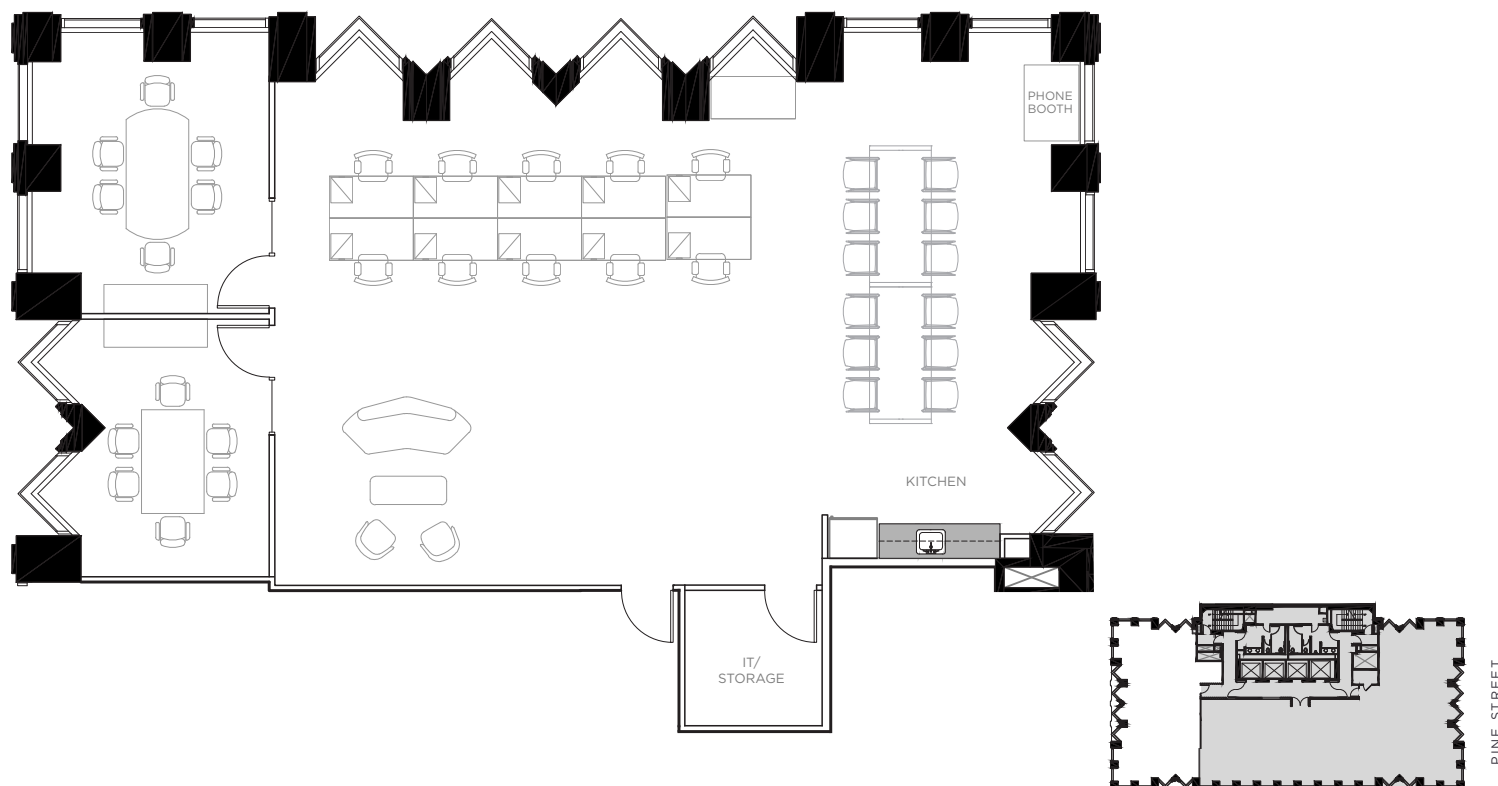
**CBRE**

235  
PINE

**SUITE 750**  
**±2,816 RSF**

**FEATURES:**

- Recently improved **plug & play** suite
- 2 conference rooms, open kitchen, storage/IT room, open area with 10 workstations, collaboration/lounge area
- Available now



**VIEW VIRTUAL TOUR**

Sam Stein | T +1 415 772 0209 | C +1 415 706 9111 | sam.stein@cbre.com | Lic. 02026162

CBRE | 415 Mission Street, 46th Floor, San Francisco CA 94105 | [www.cbre.com/sfdt](http://www.cbre.com/sfdt)



[www.235pine.com](http://www.235pine.com)

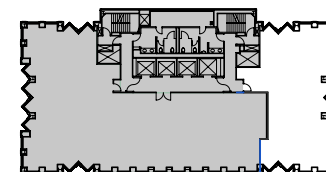
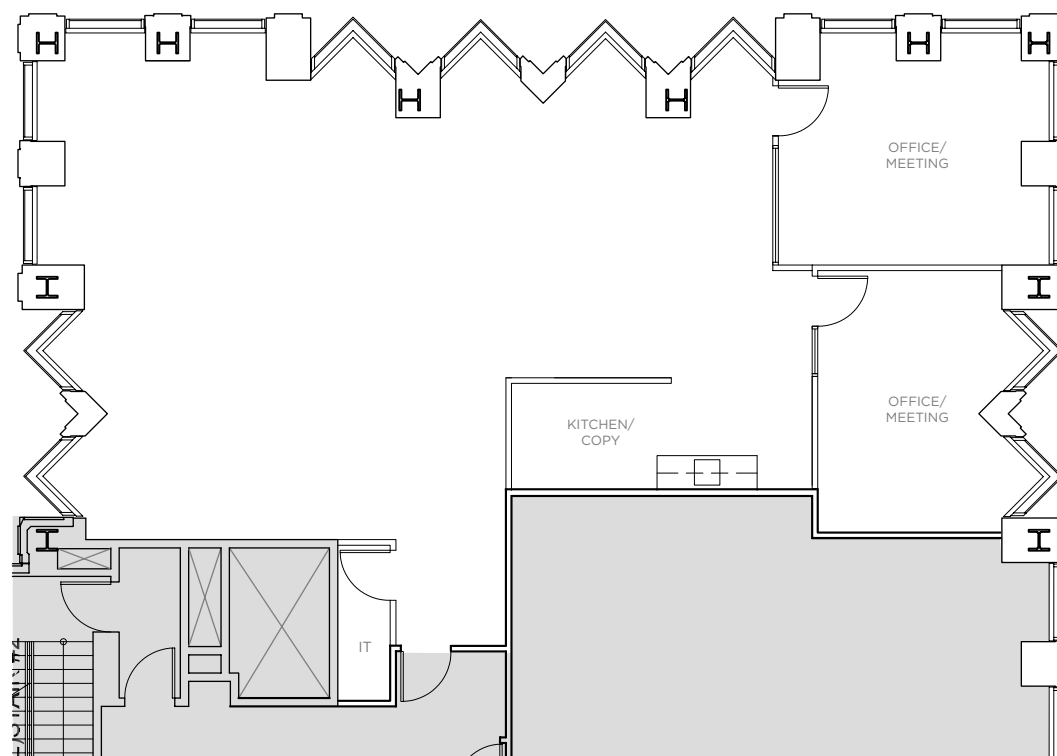
**CBRE**

235  
PINE

**SUITE 1050**  
**±2,619 RSF**

**FEATURES:**

- 2 perimeter offices/meeting rooms, kitchenette/copy room, IT closet, open area for workstations
- Ample natural light
- Available now



PINE STREET



**VIEW VIRTUAL TOUR**



[www.235pine.com](http://www.235pine.com)

**CBRE**

Sam Stein | T +1 415 772 0209 | C +1 415 706 9111 | [sam.stein@cbre.com](mailto:sam.stein@cbre.com) | Lic. 02026162

CBRE | 415 Mission Street, 46th Floor, San Francisco CA 94105 | [www.cbre.com/sfdt](http://www.cbre.com/sfdt)

235  
PINE

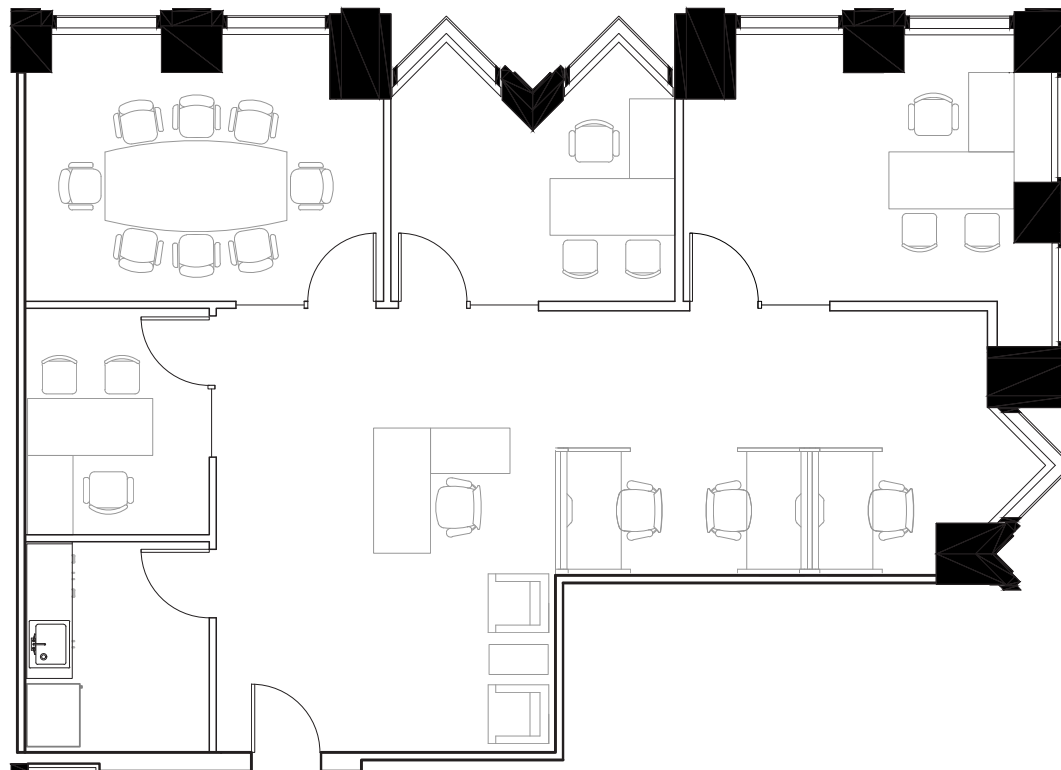
**SUITE 1250**  
**±1,863 RSF**



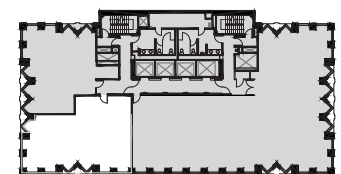
**VIEW VIRTUAL TOUR**

### FEATURES:

- Recently improved corner suite with great natural light
- 3 private offices/meeting rooms, conference room, kitchenette, open area for workstations
- Available now



FURNITURE NOT INCLUDED



PINE STREET

Sam Stein | T +1 415 772 0209 | C +1 415 706 9111 | sam.stein@cbre.com | Lic. 02026162

CBRE | 415 Mission Street, 46th Floor, San Francisco CA 94105 | www.cbre.com/sfdt



[www.235pine.com](http://www.235pine.com)

**CBRE**

235  
PINE

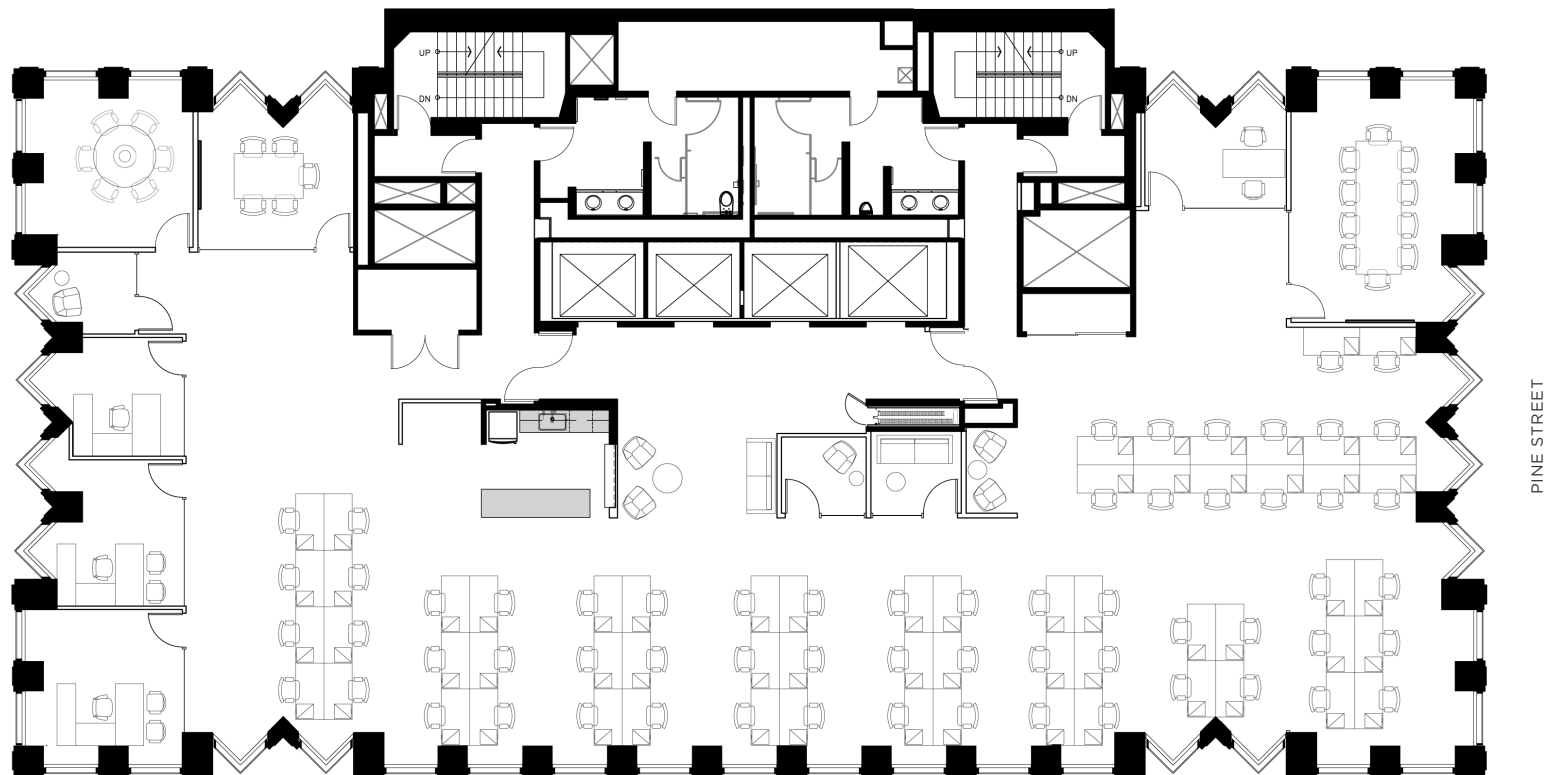


VIEW VIRTUAL TOUR

**SUITE 1300**  
**±8,553 RSF**

**FEATURES:**

- Recently improved creative full floor with partially exposed ceiling and polished concrete floors
- 4 offices/meeting rooms, 3 conference rooms, 3 phone rooms, open kitchen, open area with 32 workstations
- Furniture potentially available



PINE STREET

Sam Stein | T +1 415 772 0209 | C +1 415 706 9111 | sam.stein@cbre.com | Lic. 02026162

CBRE | 415 Mission Street, 46th Floor, San Francisco CA 94105 | www.cbre.com/sfcd



[www.235pine.com](http://www.235pine.com)

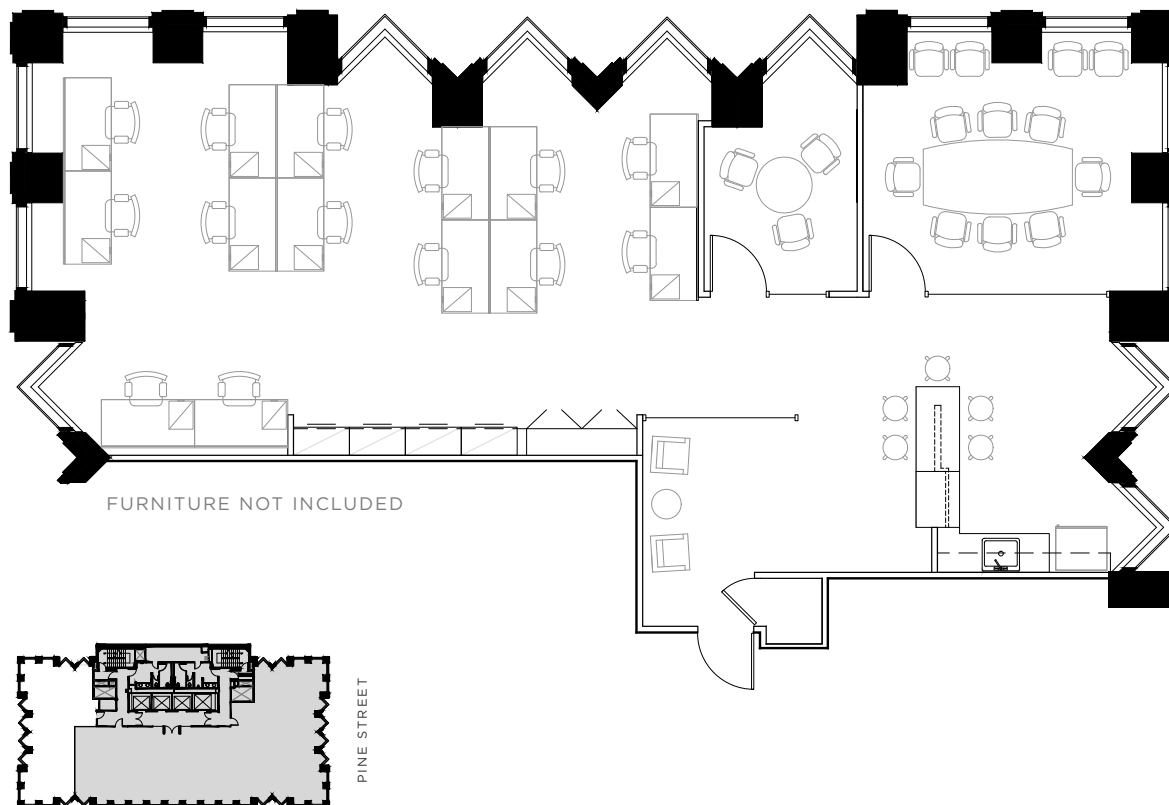
**CBRE**

235  
PINE

**SUITE 1475**  
**±2,390 RSF**

**FEATURES:**

- Recently improved suite with 1 office/meeting room, conference room, kitchenette, open area for workstations
- Ample natural light
- Available now



**VIEW VIRTUAL TOUR**

Sam Stein | T +1 415 772 0209 | C +1 415 706 9111 | sam.stein@cbre.com | Lic. 02026162

CBRE | 415 Mission Street, 46th Floor, San Francisco CA 94105 | www.cbre.com/sfdt



[www.235pine.com](http://www.235pine.com)

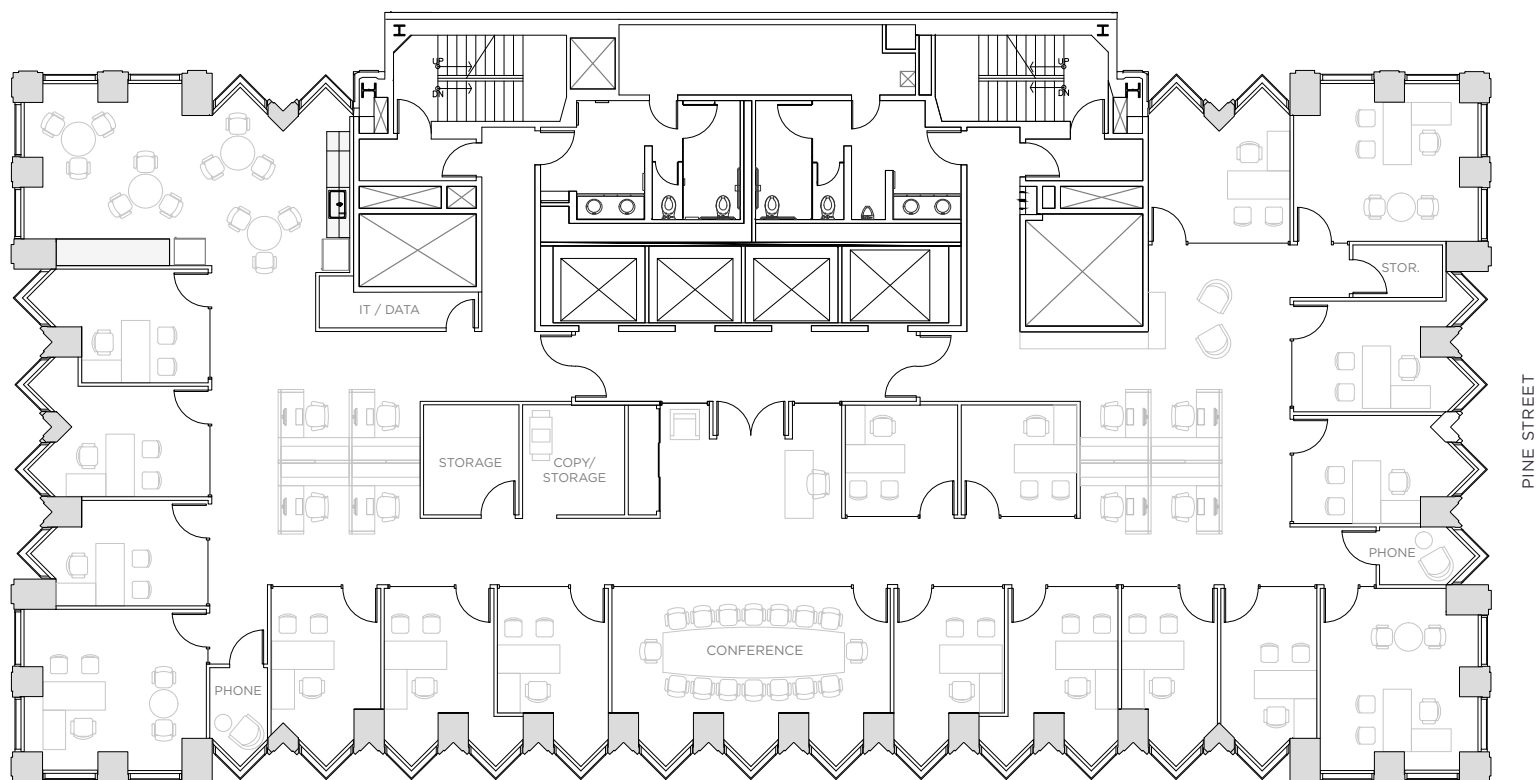
**CBRE**

235  
PINE

**SUITE 2300**  
**±8,257 RSF**

**FEATURES:**

- Recently improved **plug & play** full floor
- 16 offices/meeting rooms, large conference room, 2 phone rooms, open kitchen, storage, IT room
- Available now



Sam Stein | T +1 415 772 0209 | C +1 415 706 9111 | sam.stein@cbre.com | Lic. 02026162

CBRE | 415 Mission Street, 46th Floor, San Francisco CA 94105 | www.cbre.com/sfdt

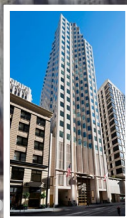


[www.235pine.com](http://www.235pine.com)

**CBRE**

235  
PINE

## TRANSPORTATION MAP



4\*  
MIN.  
Montgomery  
BART/MUNI



6\*  
MIN.  
Salesforce  
Transit Center

salesforce  
transit  
center

12\*  
MIN.  
Ferry  
Building



### DRIVE TIME TO MAJOR TRANSPORTATION OUTLETS

BAY BRIDGE - 3 MINUTES  
VAN NESS AVE - 4 MINUTES  
GOLDEN GATE BRIDGE - 20 MINUTES

\* Measured in walking time

Sam Stein | T +1 415 772 0209 | C +1 415 706 9111 | sam.stein@cbre.com | Lic. 02026162

CBRE | 415 Mission Street, 46th Floor, San Francisco CA 94105 | www.cbre.com/sfcd



[www.235pine.com](http://www.235pine.com)

**CBRE**

# 235 PINE

## AMENITIES MAP

### NEARBY RESTAURANTS / EATERIES

- |                         |                               |
|-------------------------|-------------------------------|
| 1 Tokyo Express         | 24 Estiatorio Ornos           |
| 2 Noah's Bagels         | 25 Tadich Grill               |
| 3 Subway                | 26 Perbacco                   |
| 4 Chez BeeSen           | 27 Harrington's Bar and Grill |
| 5 Orafo                 | 28 Royal Exchange             |
| 6 Locali Mediterranean  | 29 Schroeder's                |
| 7 Philz Coffee          | 30 PABU Izakaya               |
| 8 Mixt Greens           | 31 Lou's Cafe                 |
| 9 The Shota             | 32 Cenote                     |
| 10 Blue Bottle Coffee   | 33 Subway                     |
| 11 The Treasury         | 34 Nosh Cafe                  |
| 12 HI City              | 35 Wayfare Tavern             |
| 13 Freshroll            | 36 Sam's Tavern               |
| 14 Café Venue           | 37 Sam's Grill                |
| 15 iKU Sushi            | 38 Café Bastille              |
| 16 Ladle & Leaf         | 39 Café Tiramisu              |
| 17 Escape from NY Pizza | 40 Leleka                     |
| 18 Credo                | 41 B44                        |
| 19 Local Roots          | 42 Toy Soldier                |
| 20 Mendocino Farms      | 43 Latin Steakhouse           |
| 21 Proper Foods         | 44 SAJJ Mediterranean         |
| 22 Bamboo Asia          | 45 LA Fusion                  |
| 23 Starbucks            | 46 The Vault                  |

### FITNESS CENTERS

- |                     |                    |
|---------------------|--------------------|
| 1 Equinox           | 3 Barry's Bootcamp |
| 2 Flagship CrossFit | 4 24 Hour Fitness  |

© 2024 CBRE, Inc. The information above has been obtained from sources believed reliable. While we do not doubt its accuracy, we have not verified it and make no guarantee, warranty or representation about it. It is your responsibility to independently confirm its accuracy and completeness. The 'LEED® Certification Mark' is a registered trademark owned by the U.S. Green Building Council® and is used with permission. CBRE and the CBRE logo are service marks of CBRE, Inc. and/or its affiliated or related companies in the United States and other countries. All other marks displayed on this document are the Property of their respective owners.

Sam Stein | T +1 415 772 0209 | C +1 415 706 9111 | sam.stein@cbre.com | Lic. 02026162

CBRE | 415 Mission Street, 46th Floor, San Francisco CA 94105 | www.cbre.com/sfdt



[www.235pine.com](http://www.235pine.com)

**CBRE**