

**200 STAPLES DRIVE**  
**FRAMINGHAM, MA**

**FOR LEASE**  
60,000 SF CLASS A OFFICE SPACE  
LOCATED AT THE ROUTE 9 / I-90 INTERCHANGE

- **DIVISIBLE TO 15,000 SF**
- **570 KW CAT DIESEL GENERATOR**
- **2500 AMP POWER CAPACITY**
- **DUAL ELECTRICAL FEEDS**
- **FIBER PROVIDERS: VERIZON & LIGHTOWER**
- **SLAB TO SLAB HEIGHT:** 1ST FLOOR - 13.4'  
2ND FLOOR - 13.8'
- **HVAC: TWO 105 TON TRANE UNITS**
- **PARKING RATIO: 6.36/1,000**
- **BUILDING IS ENERGY STAR CERTIFIED**



PARK AMENITIES INCLUDE: GRAB & GO CAFE, CAFETERIA, CONFERENCE CENTER, ON-SITE MANAGEMENT, HOTEL, & DAYCARE FACILITY,



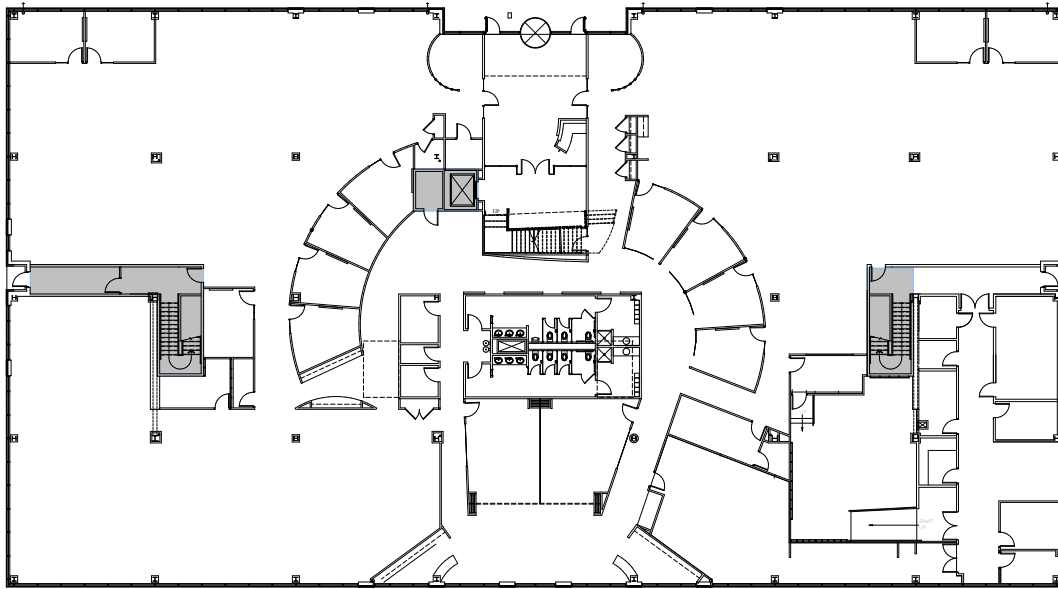
**Kevin Hanna**  
kevin.hanna@cushwake.com  
617.279.4535

**Paul Leone**  
paul.leone@cushwake.com  
617.204.4127

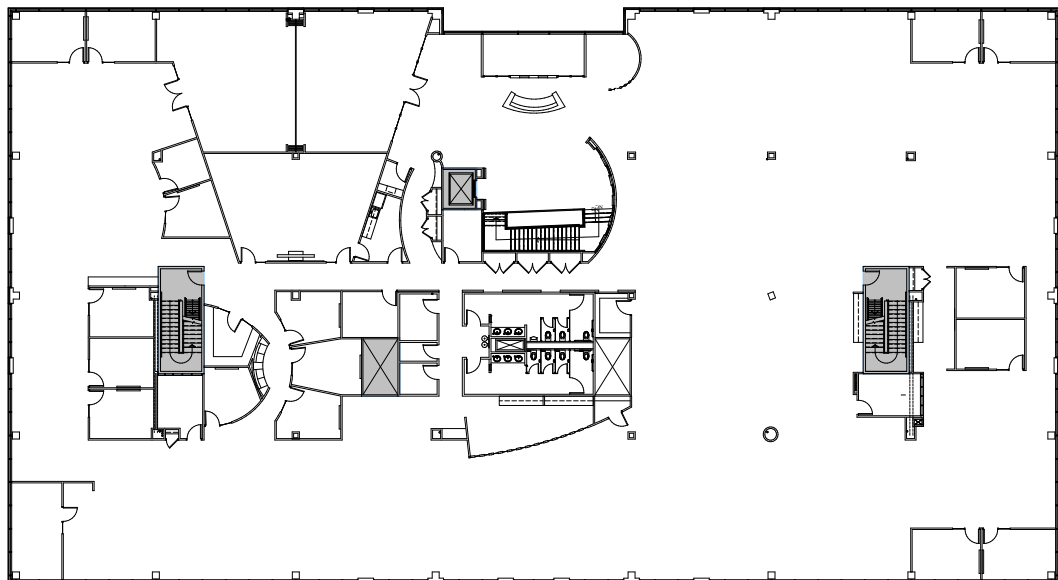
**Connor Barnes**  
connor.barnes@cushwake.com  
617.279.4536

**Brian Collins**  
brian.collins@cushwake.com  
617.204.4114

**FIRST FLOOR**



**SECOND FLOOR**



**Kevin Hanna**  
kevin.hanna@cushwake.com  
617.279.4535

**Paul Leone**  
paul.leone@cushwake.com  
617.204.4127

**Connor Barnes**  
connor.barnes@cushwake.com  
617.279.4536

**Brian Collins**  
brian.collins@cushwake.com  
617.204.4114