

# Everett Mall Plaza

RETAIL FOR LEASE

1201 - 1425 SE Everett Mall Way, Everett WA 98208



## THE OPPORTUNITY

Prime Walmart, Michael's and Pier 1 Imports center located directly across the street from the Everett Mall, which was acquired in the Fall 2017. New mall owner, Brixton Capital, "...is very excited about the growth in the area and the long term sustainability of Everett Mall."\* Everett Mall Plaza and the Everett Mall straddle Everett Mall Way with an average daily traffic count of over 40,000 VPD. Easy, multi-point access, pylon signage and a line-up of strong, synergistic co-tenants. Unique opportunity to join an established retail area with stable, diverse retailers, service providers and restaurants. Call today for more information on options, including combining or demising spaces!



Tiffini Connell | Jonathan Willett

(206) 283-5212

[www.wccommercialrealty.com](http://www.wccommercialrealty.com)

DISCLAIMER: The above information has been secured from sources believed to be reliable, however, no representations are made to its accuracy. Prospective tenants or buyers should consult their professional advisors and conduct their own independent investigation. Site plan and configuration are subject to change. Properties are subject to change in price and/or availability without notice. West Coast Commercial Realty, LLC

# WCCR

West Coast Commercial Realty

Retail  
Commercial  
Specialists



# Everett Mall Plaza

RETAIL FOR LEASE

1201 - 1425 SE Everett Mall Way, Everett WA 98208

Highly visible location directly across from Everett Mall



EVERETT  
MALL



WCCR

West Coast Commercial Realty

Retail  
Commercial  
Specialists



Tiffini Connell | Jonathan Willett (206) 283-5212

[www.wccommercialrealty.com](http://www.wccommercialrealty.com)

DISCLAIMER: The above information has been secured from sources believed to be reliable, however, no representations are made to its accuracy. Prospective tenants or buyers should consult their professional advisors and conduct their own independent investigation. Site plan and configuration are subject to change. Properties are subject to change in price and/or availability without notice. West Coast Commercial Realty, LLC



# Everett Mall Plaza

## RETAIL FOR LEASE

1201 - 1425 SE Everett Mall Way, Everett WA 98208



## DEMOGRAPHICS



### TOTAL POPULATION

1-Mile: 16,536  
3-Mile: 120,241  
5-Mile: 249,791



### TOTAL DAYTIME EMPLOYEES

1-Mile: 12,688  
3-Mile: 42,054  
5-Mile: 98,281



### AVERAGE HOUSEHOLD INCOME

1-Mile: \$72,789  
3-Mile: \$79,005  
5-Mile: \$97,238



### POPULATION MEDIAN AGE

1-Mile: 34.1  
3-Mile: 34.1  
5-Mile: 36.0

# WCCR

West Coast Commercial Realty

Retail  
Commercial  
Specialists



Tiffini Connell | Jonathan Willett

(206) 283-5212

[www.wccommercialrealty.com](http://www.wccommercialrealty.com)

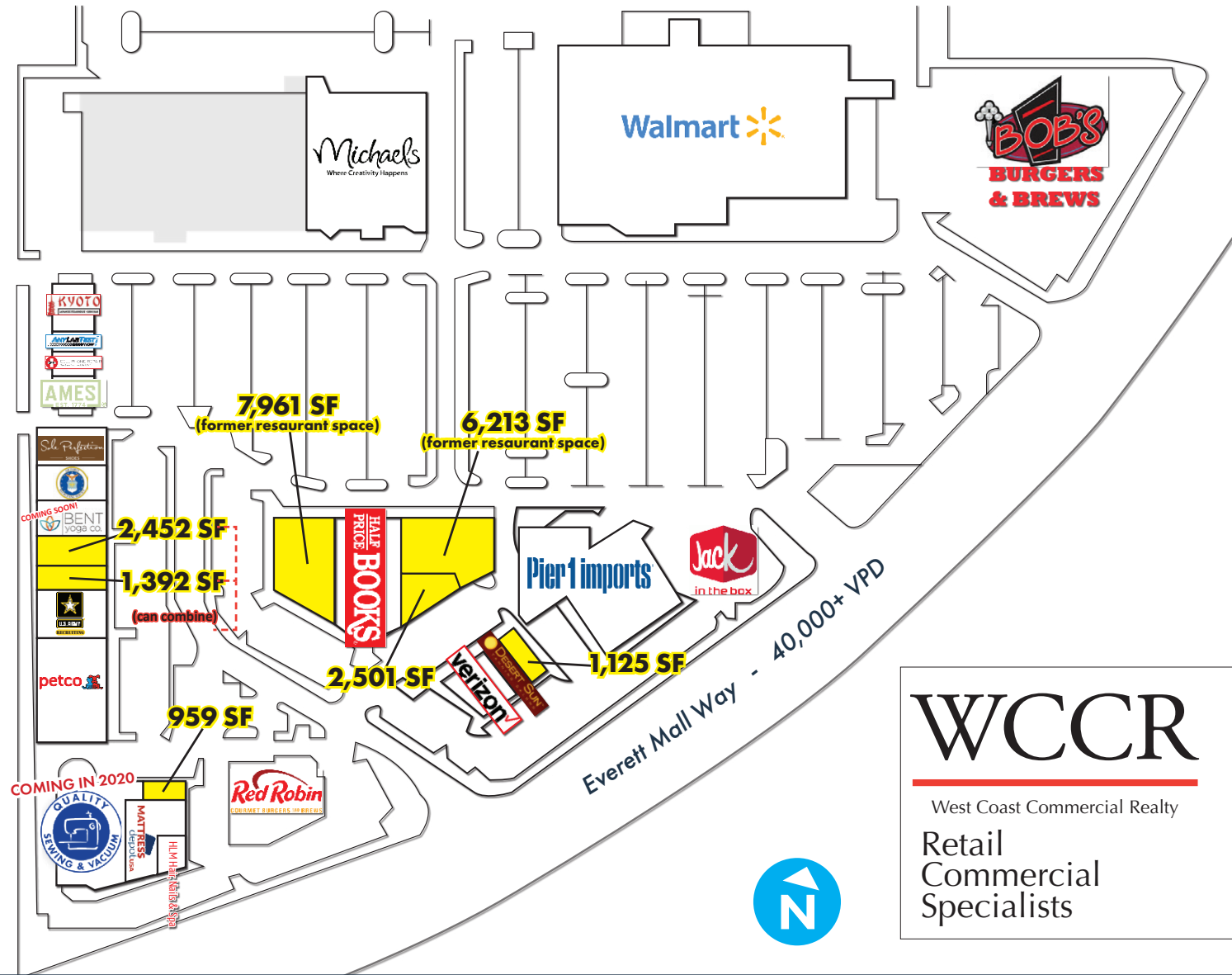
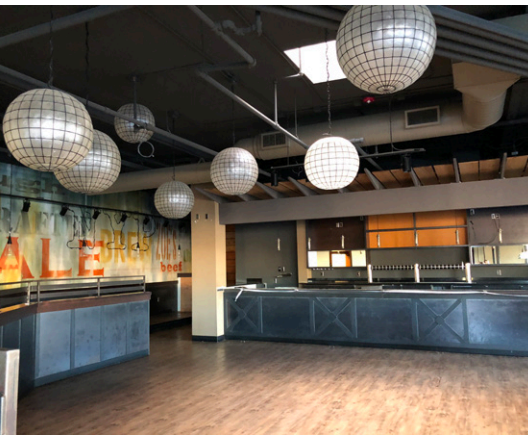
DISCLAIMER: The above information has been secured from sources believed to be reliable, however, no representations are made to its accuracy. Prospective tenants or buyers should consult their professional advisors and conduct their own independent investigation. Site plan and configuration are subject to change. Properties are subject to change in price and/or availability without notice. West Coast Commercial Realty, LLC



# Everett Mall Plaza

RETAIL FOR LEASE

1201 - 1425 SE Everett Mall Way, Everett WA 98208



Located on the highly visible, lighted intersection of Everett Mall Way directly across from Everett Mall