

FOR LEASE

## Provinces Shopping Center

1070 East Ray Road | Chandler, Arizona 85225



## Overview

FORMER RESTAURANT 2,936 SF

SHOP SPACE 1,200 SF

## Demographics

|                         | 1 MILE   | 3 MILE   | 5 MILE   |
|-------------------------|----------|----------|----------|
| 2019 Est Population     | 22,602   | 145,720  | 347,947  |
| 2024 Est Population     | 23,942   | 156,819  | 374,623  |
| Average HH Income       | \$99,169 | \$62,107 | \$64,677 |
| 2019 Daytime Population | 41,968   | 322,232  | 638,556  |

Year: 2018 | Source: Esri

## Traffic Counts

Ray Rd 24,549 VPD

McQueen Rd 28,186 VPD

Year: 2019 | Source: MPSI

## Contact

SEAN LIEB

602.682.6010 | sean.lieb@srsre.com

SCOTT ELLSWORTH

602.682.6063 | scott.ellsworth@srsre.com

## Description

- 2,936 former Rosati's Pizza with FF&E in place
- 1,200 SF former pool supply store with inventory still in place
- Busy Safeway anchored center
- Ample parking with good signage opportunities
- Just under \$100,000 Average HH Incomes within 1 mile
- Neighboring tenants include:



Dignity Health



DOLLAR TREE



SRS | 3131 E Camelback Road, Suite 110 | Phoenix, AZ 85016 | 602.682.6000

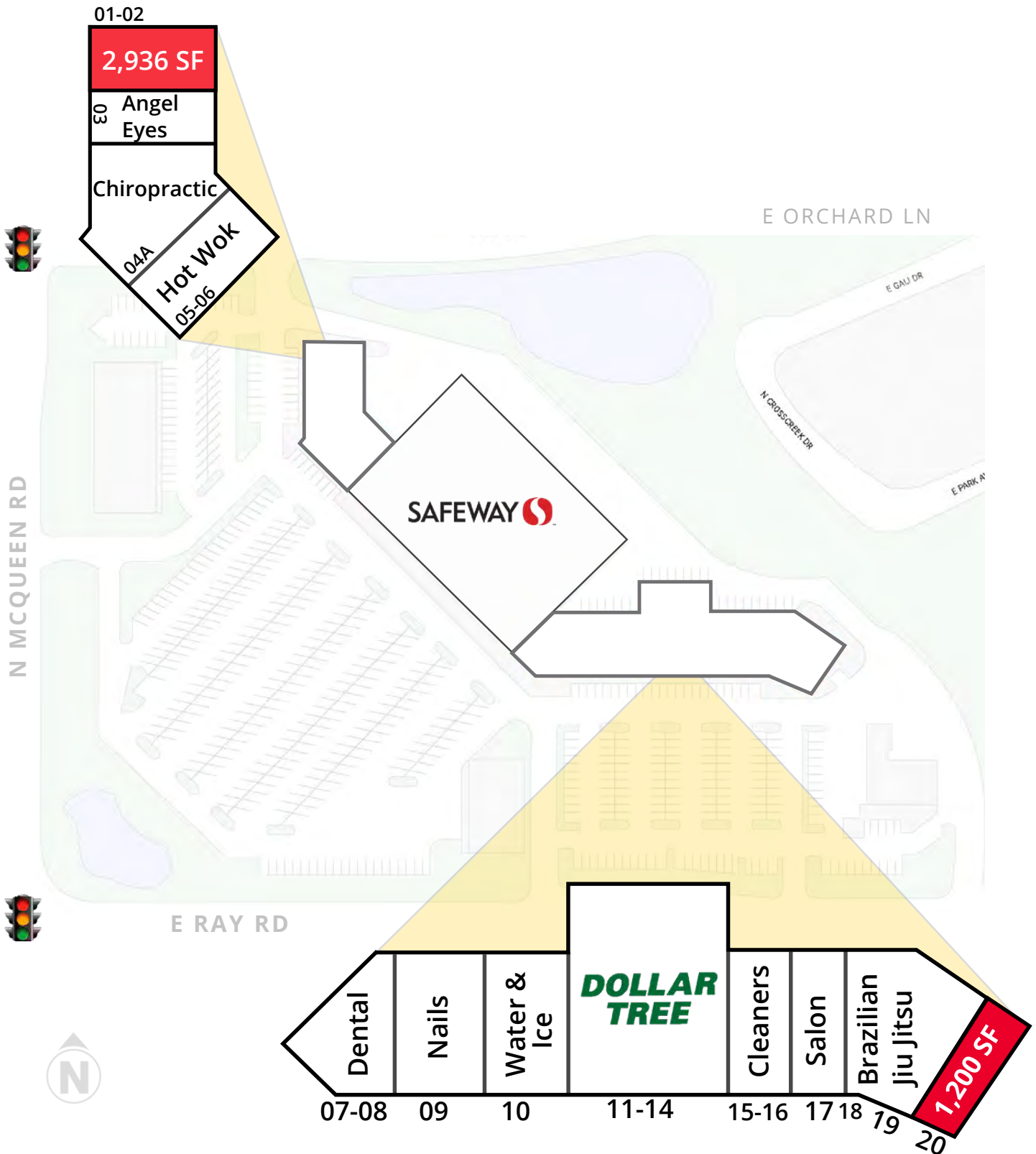
This information contained herein was obtained from sources deemed to be reliable; however SRS makes no guarantees, warranties or representations as to the completeness or accuracy thereof.

SRSRE.COM

FOR LEASE

# Provinces Shopping Center

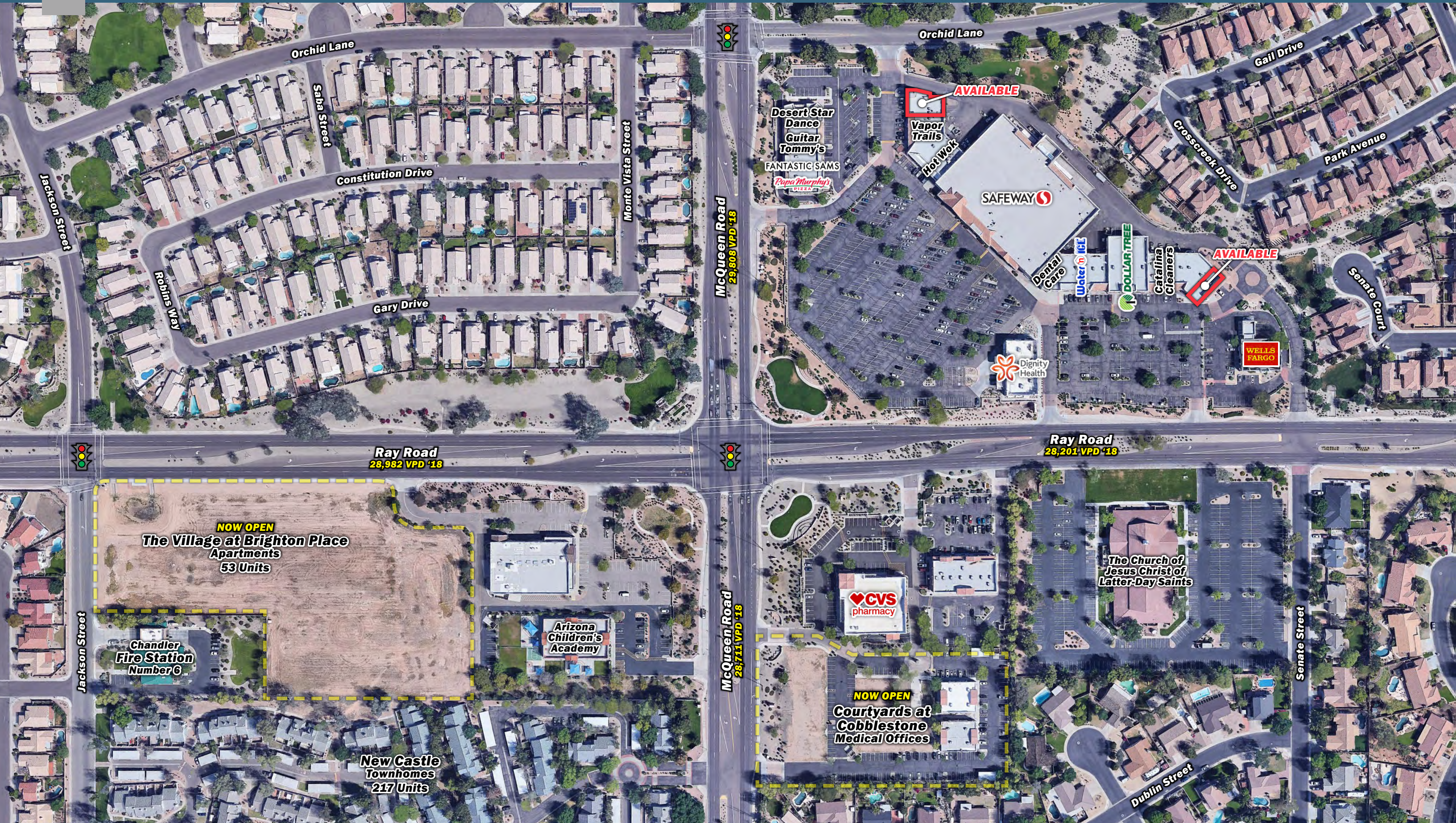
1070 East Ray Road | Chandler, Arizona 85225





# Provinces Shopping Center

E/NEC Ray Road & McQueen Road | 1070 East Ray Road | Chandler, Arizona 85225





## Provinces Shopping Center

E/NEC Ray Road &amp; McQueen Road | 1070 East Ray Road | Chandler, Arizona 85225

